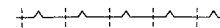




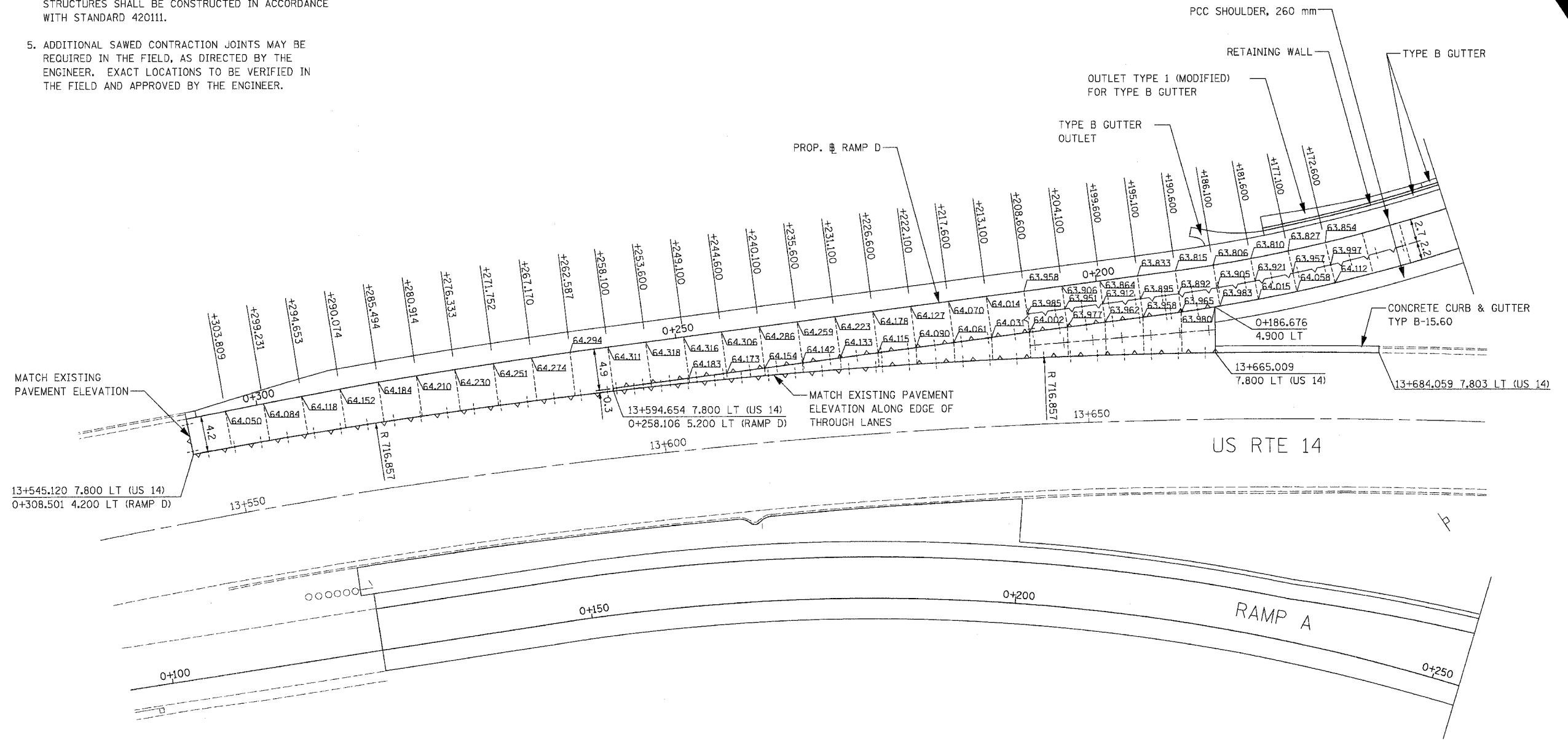
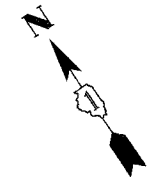
F.A.P. RTE.	SECTION	COUNTY	TOTAL SHEETS	SHEET NO.
343	*	COOK	283	95
STA. 9+713.000		TO STA. 10+151.000		
FED. ROAD DIST. NO. 1		ILLINOIS FED. AID PROJECT		
* 70D-Y-B-R & 70HB-R-1		62897		

NOTES:

1. ALL DIMENSIONS ARE IN METERS (m) UNLESS OTHERWISE NOTED.
2. ALL ELEVATIONS ARE 200 m ABOVE THOSE SHOWN.
3. FOR MORE INFORMATION SEE STANDARDS 420001 AND, 420201.
4. PAVEMENT BLOCK OUTS FOR MANHOLES AND OTHER STRUCTURES SHALL BE CONSTRUCTED IN ACCORDANCE WITH STANDARD 420111.
5. ADDITIONAL SAWED CONTRACTION JOINTS MAY BE REQUIRED IN THE FIELD, AS DIRECTED BY THE ENGINEER. EXACT LOCATIONS TO BE VERIFIED IN THE FIELD AND APPROVED BY THE ENGINEER.

LEGEND:

-  CONSTRUCTION JOINT
-  SAWED LONGITUDINAL JOINT
-  SAWED TRANSVERSE JOINT



US RTE 14

RAMP A

REVISIONS	
NAME	DATE

ILLINOIS DEPARTMENT OF TRANSPORTATION
ILLINOIS ROUTE 68
TERMINAL ELEVATION DETAILS
RAMP D
SCALE 1:250
DATE OCTOBER, 2006
DRAWN BY GRH
CHECKED BY PK

