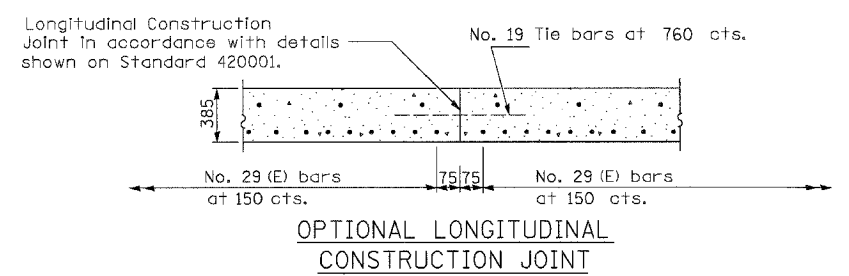
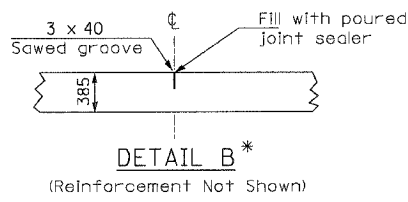
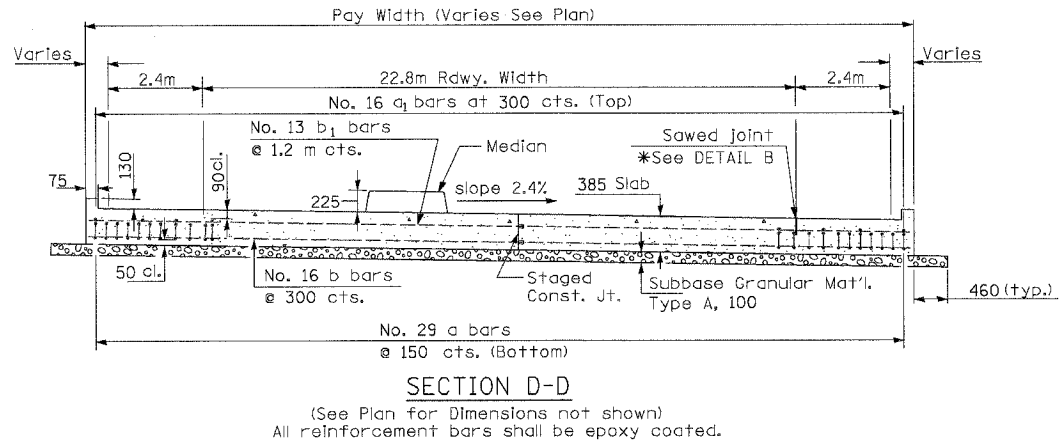
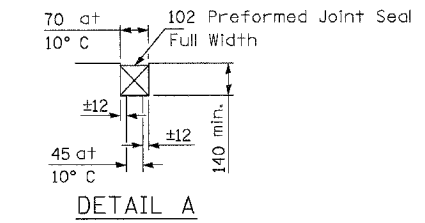
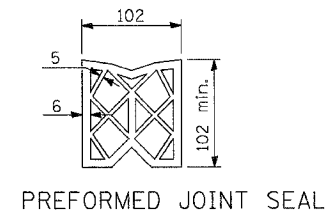
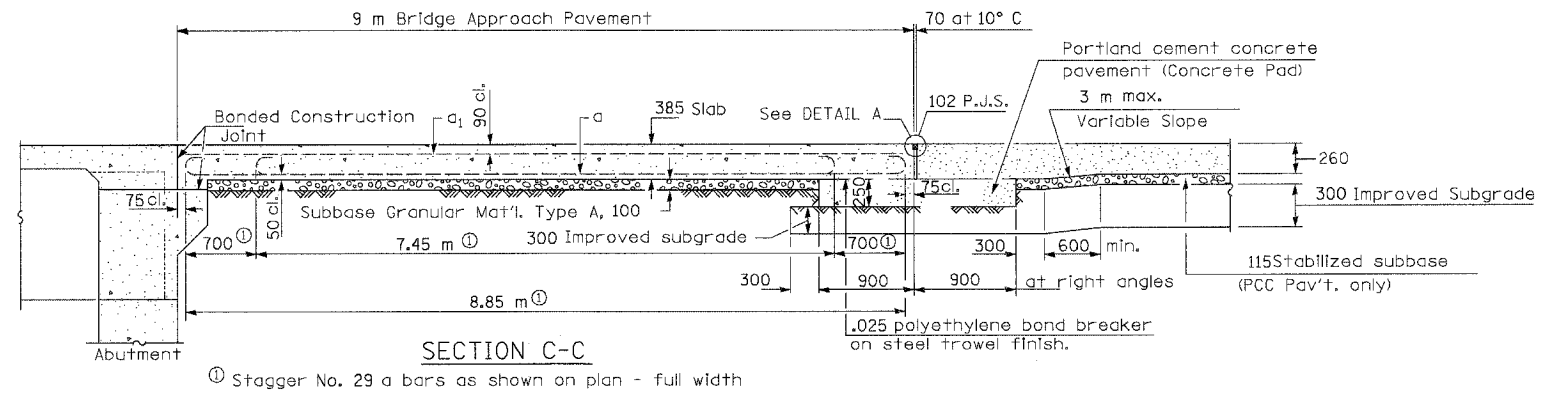
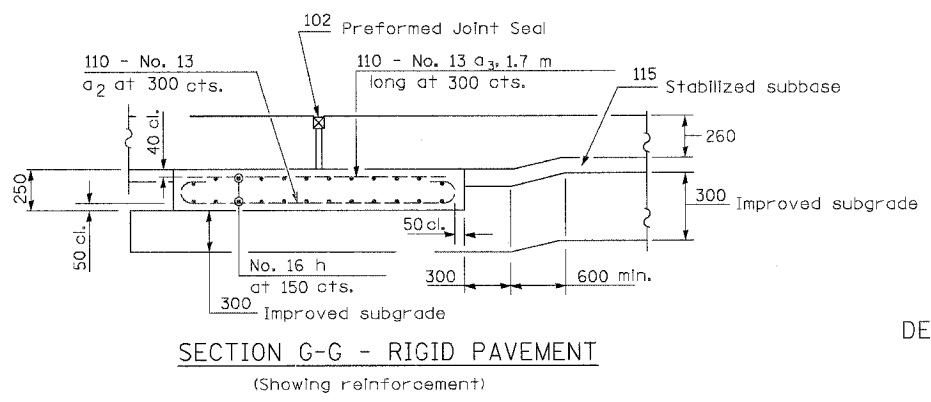
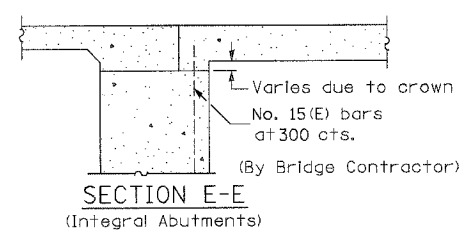


F.A.P. RTE.	SECTION	COUNTY	TOTAL SHEETS	SHEET NO.
343		COOK	283	102
STA. 9+713.000 TO STA. 10+151.000				
FED. ROAD DIST. NO. 1 ILLINOIS FED. AID PROJECT				
* 70D-Y-B-R & 70HB-R-1 62897				



As approved by the Engineer, the Contractor may elect to reduce the widths of pour by use of the Optional Longitudinal Construction Joint shown. Joints shall be located at the edge of a traffic lane.



DESIGN STRESSES
 $f_y = 400 \text{ MPa}$
 $f'_c = 24 \text{ MPa}$
 $n = 8.5$

All dimensions are in millimeters unless otherwise shown.

REVISIONS		ILLINOIS DEPARTMENT OF TRANSPORTATION ILLINOIS ROUTE 68
NAME	DATE	
		BRIDGE APPROACH PAVEMENT (SPECIAL) S.N. 016-2861
SCALE N.T.S.		DRAWN BY BTO
DATE OCTOBER, 2006		CHECKED BY JAN