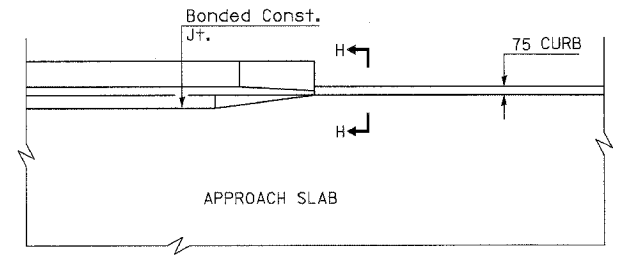
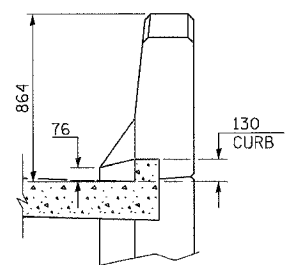


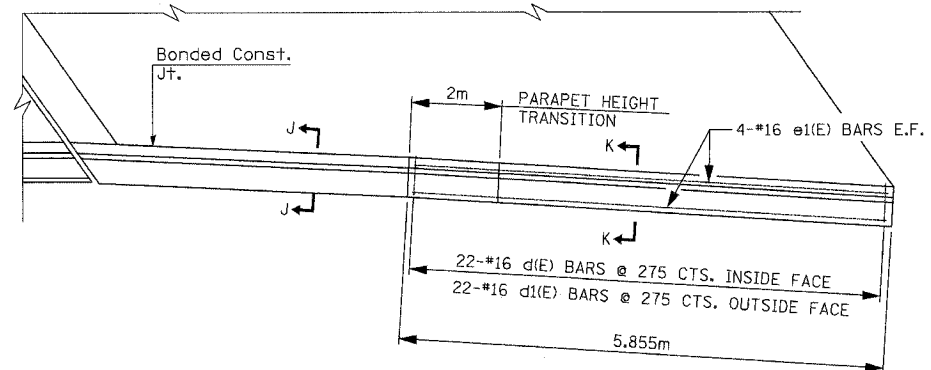
F.A.P. RTE.	SECTION	COUNTY	TOTAL SHEETS	SHEET NO.
343		COOK	283	106
STA. 9+713.000		TO STA. 10+151.000		
FED. ROAD DIST. NO. 1		ILLINOIS	FED. AID PROJECT	
70D-Y-B-R & 70HB-R-1		62897		



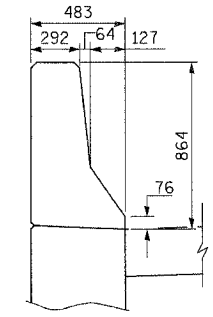
APPROACH SLAB PARAPET TO CURB TRANSITION (TYP.)



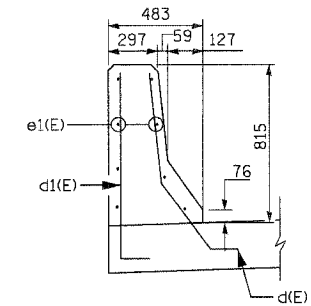
SECTION H - H



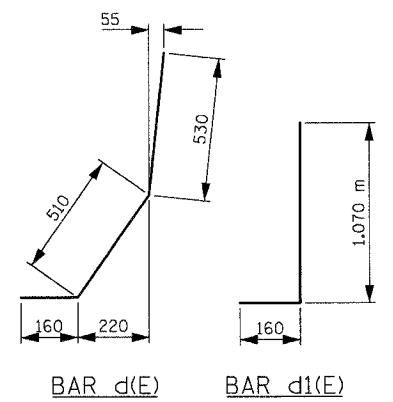
APPROACH SLAB PARAPET TRANSITION AT SOUTHEAST WINGWALL



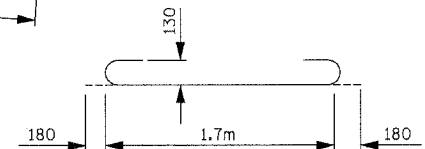
SECTION J - J



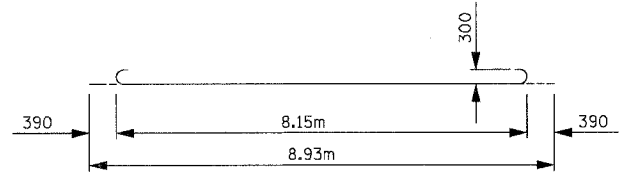
SECTION K - K



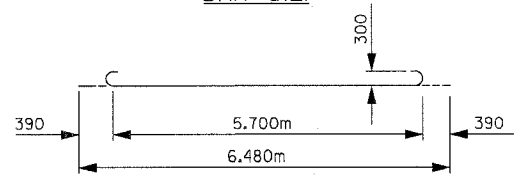
BAR d(E) BAR d1(E)



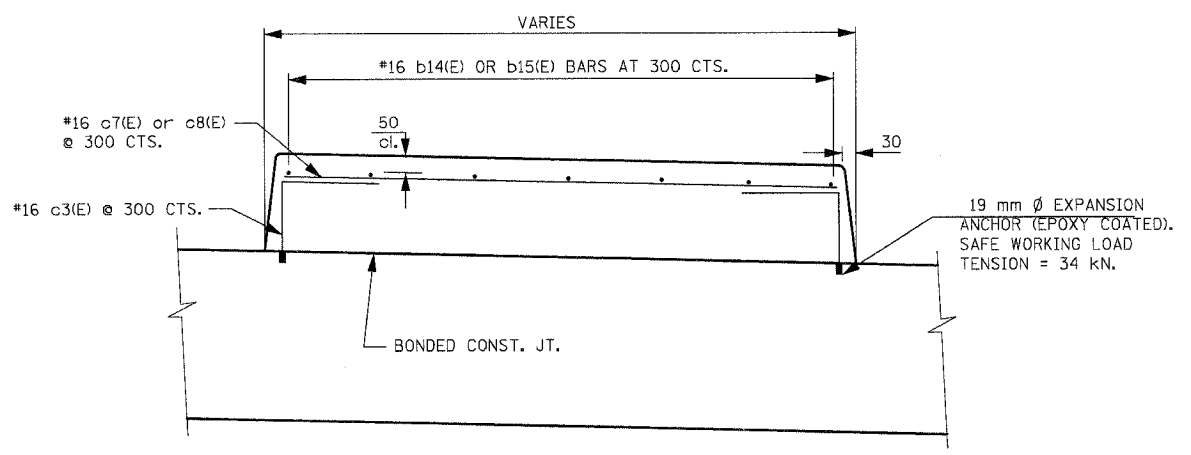
BAR a2(E)



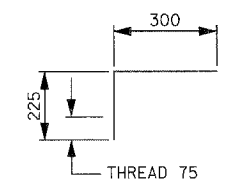
BAR a(E)



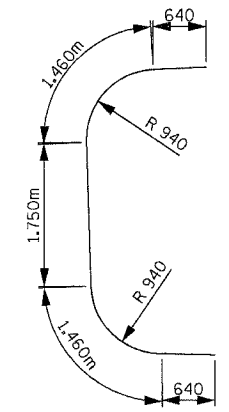
BAR a4(E)



SECTION F - F



BAR c3(E)**



BAR c6(E)

BILL OF MATERIAL

BAR	NO.	SIZE	LENGTH	SHAPE
a(E)	358	#29	8.930m	—
a1(E)	181	#16	8.850m	—
a2(E)	225	#13	2.060m	—
a3(E)	225	#13	1.700m	—
a4(E)	2	#29	6.480m	—
a5(E)	3	#16	5.700m	—
b10(E)	124	#16	8.380m	—
b11(E)	32	#13	8.280m	—
b12(E)	124	#16	9.250m	—
b13(E)	32	#13	9.150m	—
b14(E)	13	#16	7.200m	—
b15(E)	21	#16	9.830m	—
c3(E)	108	#16	525	┌
c6(E)	1	#16	5.950m	┌
c7(E)	25	#16	3.800m	—
c8(E)	33	#16	7.550m	—
d(E)	22	#16	1.200m	┌
d1(E)	22	#16	1.230m	┌
e1(E)	8	#16	5.760m	—
h4(E)	48	#16	8.070m	—
h5(E)	48	#16	8.960m	—
h6(E)	48	#16	8.680m	—
h7(E)	48	#16	9.640m	—
BAR SPLICERS		EACH	126	
REINFORCEMENT BARS, EPOXY COATED		KG	28,650	
CONCRETE SUPERSTRUCTURES		CU M	20.4	
PREFORMED JOINT SEAL		METER	67.0	
CONCRETE PAD		SQ M	121.4	
POLYETHYLENE BOND BREAKER		SQ M	121.4	
BRIDGE APPROACH PAVEMENT (SPECIAL)		SQ M	482.3	

REINFORCEMENT BARS DESIGNATED (E) SHALL BE EPOXY COATED.

* ITEMS INCLUDED IN THE COST FOR BRIDGE APPROACH PAVEMENT (SPECIAL).

** COST OF MACHINING BAR c3(E) INCLUDED WITH BRIDGE APPROACH PAVEMENT (SPECIAL).

REVISIONS		ILLINOIS DEPARTMENT OF TRANSPORTATION ILLINOIS ROUTE 68
NAME	DATE	
		BRIDGE APPROACH PAVEMENT (SPECIAL) S.N. 016-2732
SCALE N.T.S.		DRAWN BY BTO
DATE OCTOBER, 2006		CHECKED BY JAN