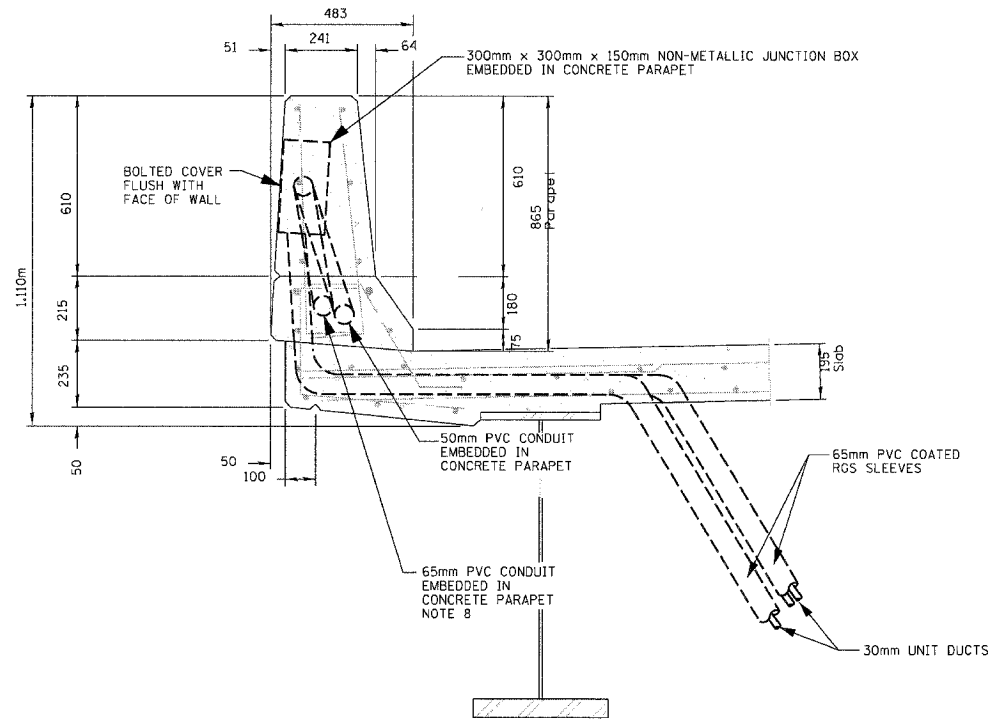
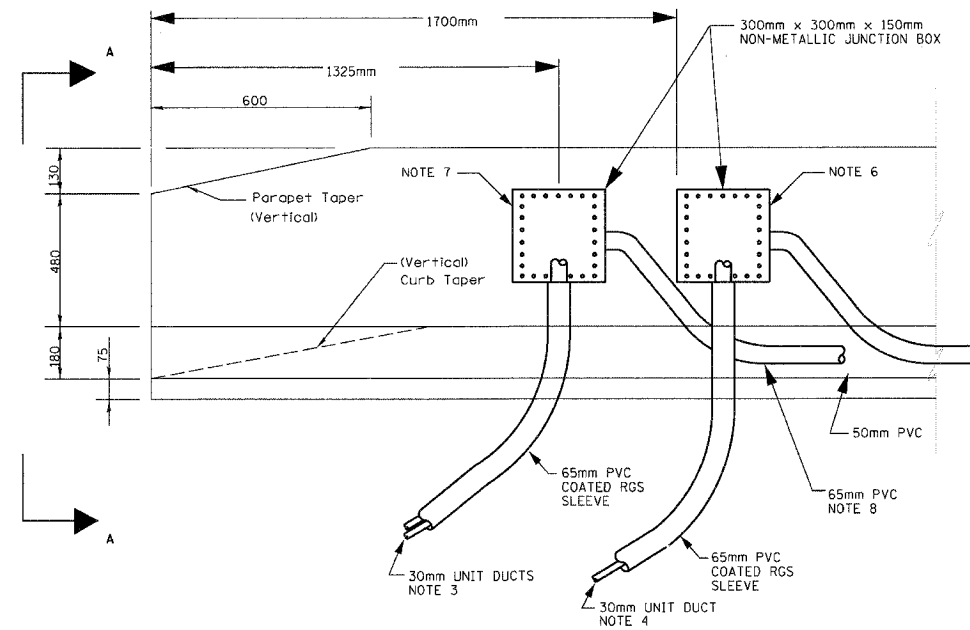


F.A.P. RTE.	SECTION	COUNTY	TOTAL SHEETS	SHEET NO.
343	*	COOK	283	142
STA. TO STA.		FED. ROAD DIST. NO. 1 ILLINOIS FED. AID PROJECT		
* 70D-Y-R & 70HB-R-1		62897		

KEY PLAN



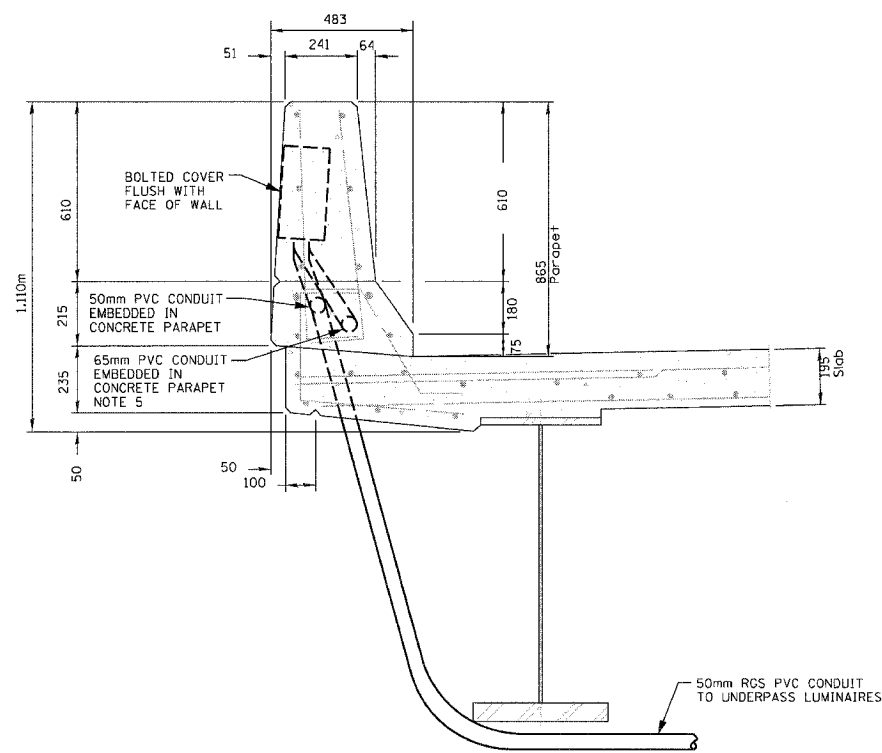
1 BRIDGE OVER US - 14 - SECTION A-A THRU PARAPET
SCALE: N.T.S.



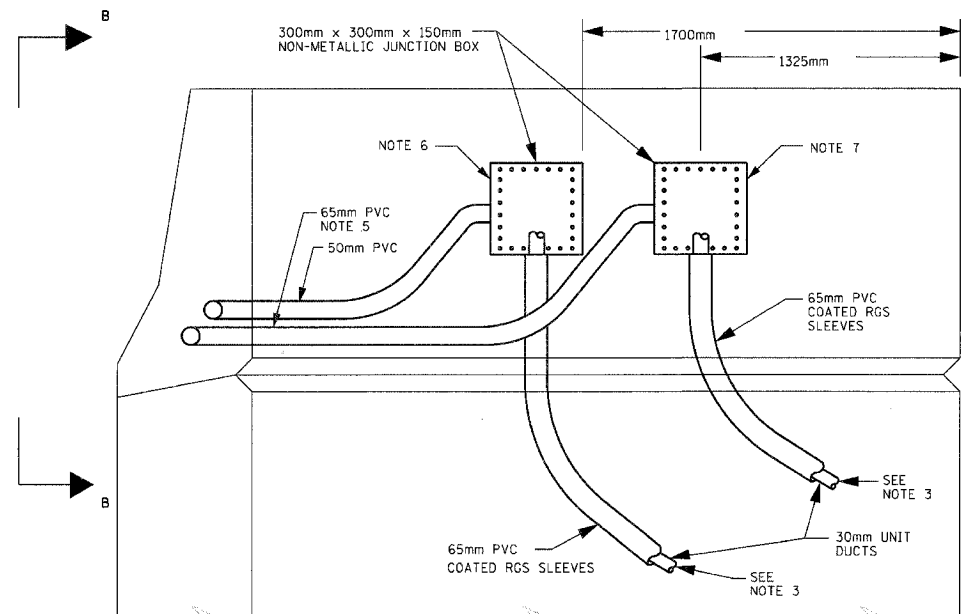
2 BRIDGE OVER US - 14 - END ELEVATION
SCALE: N.T.S.

NOTES

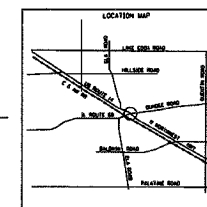
- 50mm EMBEDDED PVC CONDUITS SHALL BE PLACED IN THE LOWER CURBED PORTION OF THE PARAPET.
- COORDINATE WITH OTHER TRADES TO MAINTAIN 5mm CLEARANCE FROM ALL REINFORCEMENTS.
- UNIT DUCT WITH 3-1/2 NO. 4 AND 1-1/2 NO. 6 GRD. 600V TYPE RHH/RHW/EPR LIGHTING CONDUCTORS.
- UNIT DUCT WITH TRAFFIC SIGNAL FIBER OPTIC CABLES. REFER TO SHEETS TS-12 AND TS-13.
- 65mm EMBEDDED PVC CONDUITS WITH 3-1/2*4 AND 1-1/2*6 GROUND.
- JUNCTION BOX FOR TRAFFIC SIGNALS EMBEDDED IN PARAPET WALL.
- JUNCTION BOX FOR ELECTRIC EMBEDDED IN PARAPET WALL.
- 65 mm WITH 6-1/2*4 AND 2-1/2*6 GROUNDS.



3 BRIDGE OVER UPRR - SECTION B-B THRU PARAPET
SCALE: N.T.S.



4 BRIDGE OVER UPRR - WING WALL, OUTSIDE FACE, END ELEVATION
SCALE: N.T.S.



REVISIONS	
NAME	DATE

LT-17 OF 19

ILLINOIS DEPARTMENT OF TRANSPORTATION
ILLINOIS ROUTE 68 AT U.S. ROUTE 14
ROADWAY LIGHTING
BRIDGE CROSSING DETAILS

SCALE NONE
DATE NOVEMBER 2006

DRAWN BY R.P.J.
DESIGNED BY I.B.
CHECKED BY A.D.O.

Rick Johns
 IDOT - District 01
 02-05-1001-STV-03 - IL 68 over US 14
 P:\02-05-1001-STV-03 - IL 68 over US 14\Working Files\Drawings\Sheet\17 - Bridge Details.dgn
 11/27/2006 3:40:08 PM 1.0000 M / M.