

F.A.P. RTE.	SECTION	COUNTY	TOTAL SHEETS	SHEET NO.
343	70D-Y-B-R	COOK	283	155
STA.		TO STA.		
FED. ROAD DIST. NO.		ILLINOIS	FED. AID PROJECT	
CONTRACT NO. 62897				

BENCH MARK

Chiseled '□' NW Corner of West Abutment of IL-68 bridge over UPRR Elev. 269.746

EXISTING STRUCTURE

S.N. 016-0523 was built in 1931. The structure was widened, raised, and the superstructure replaced in 1967. In 1994, bituminous overlay was added. The three span structure rests on spread footings at the closed abutments and spread footings at the multi-column piers. The superstructure consists of 690mm deep concrete deck beams with 75mm of overlay. The concrete parapets have steel railings with a fence on the northside. The back to back abutment length is 42.52m and the deck is 23.16m out to out.

During construction of the new structure, staged construction will be utilized to maintain one lane of traffic in each direction.

No salvage.

NOTES:

- All dimensions in millimeters (mm) except as noted.
- No free fall deck drains will be permitted in the span over the tracks or within 3m of cross arms of a railroad pole line.
- The width between the guardrails shall be the width between the bridge rails or parapets which will require approach shoulder widening.

STATION 9+900.324
BUILT 20 BY
STATE OF ILLINOIS
F.A.P. RT. 343 SEC 70D-Y-B-R
COOK COUNTY
LOADING HS20
STR. NO. 016-2732

NAME PLATE

See Std. 515001

LOADING HS20-44

Allow 2.4 kN/m² future wearing surface

DESIGN SPECIFICATION

2002 AASHTO Std. Spec, 17th edition

DESIGN STRESSES

NEW CONSTRUCTION

FIELD UNITS

f'c = 24 MPa (concrete)
Fy = 345 MPa (M270M, Gr. 345 Struc. Steel)
fy = 400 MPa (reinforcement)

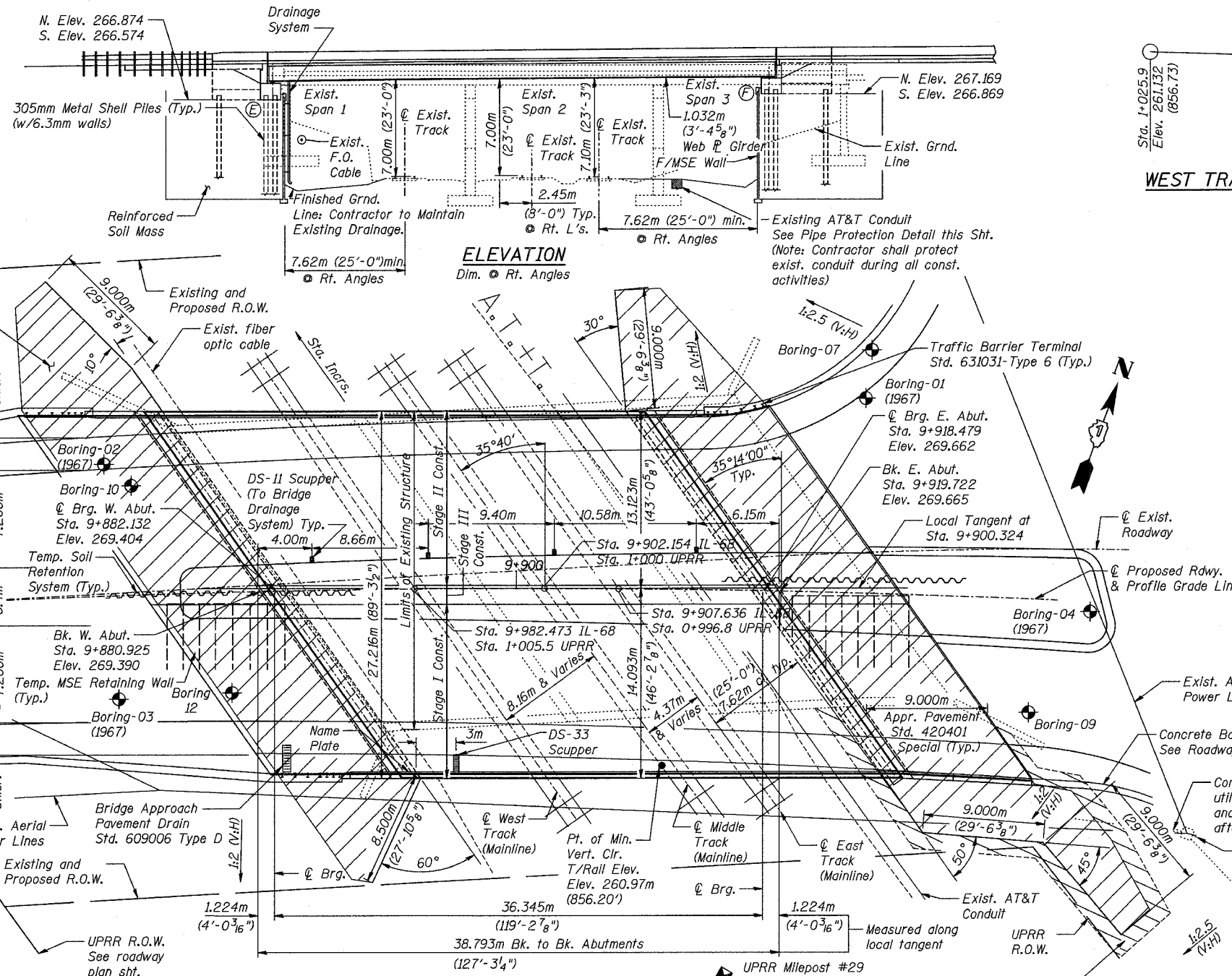
SEISMIC DATA

Seismic Performance Category (SPC) = A
Bedrock Acceleration Coefficient (A) = 0.035g
Site Coefficient (S) = 1.0

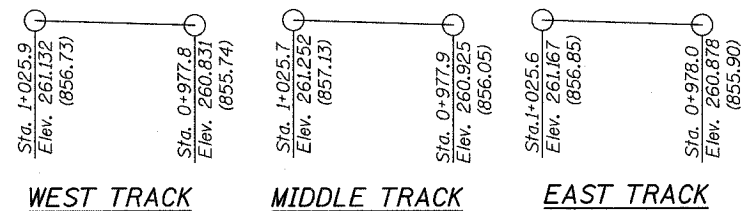
HORIZONTAL CURVE DATA

Curve 68-1

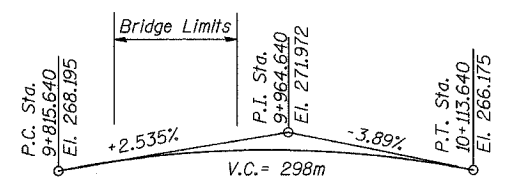
PI Sta. = 9+966.854 E = 7.453m
L = 14°54'14" RT. S.E. = 2.4%
R = 875.000m P.C. Sta. = 9+852.405
T = 114.450m P.T. Sta. = 10+080.012
L = 227.607m



ELEVATION
Dim. • Rt. Angles

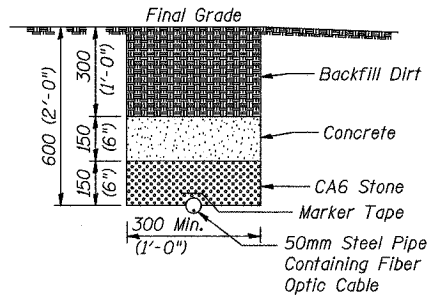


TOP OF RAIL ELEVATIONS UPRR

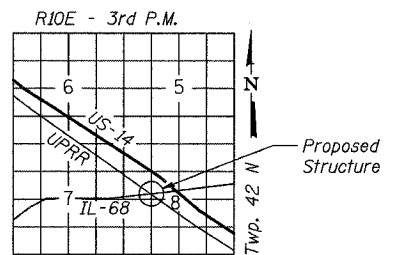


PROFILE GRADE LINE

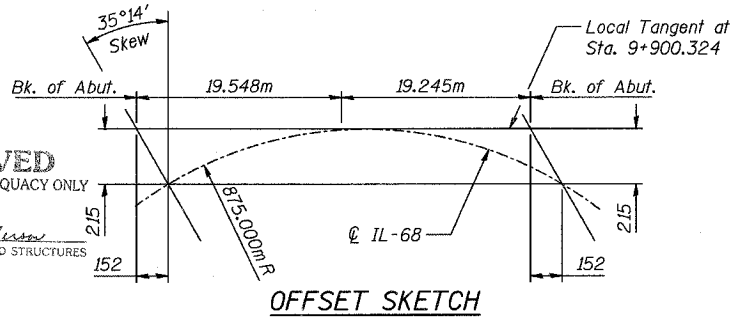
IL Route 68 (NTS)



50MM STEEL PIPE PROTECTION DETAIL



LOCATION SKETCH



OFFSET SKETCH



APPROVED
FOR STRUCTURAL ADEQUACY ONLY
Robert E. Anderson
ENGINEER OF BRIDGES AND STRUCTURES

REVISIONS	
NAME	DATE

ILLINOIS DEPARTMENT OF TRANSPORTATION
IL ROUTE 68 OVER UPRR
F.A.P. ROUTE 343 SECTION 70D-Y-B-R
COOK COUNTY STATION 9+900.324
STRUCTURE NO. 016-2732
GENERAL PLAN
DESIGNED: BTO DRAWN: BTO
DATE: 10/06 CHECKED: JAN CHECKED: JAN

SHT. S-01 OF S-34