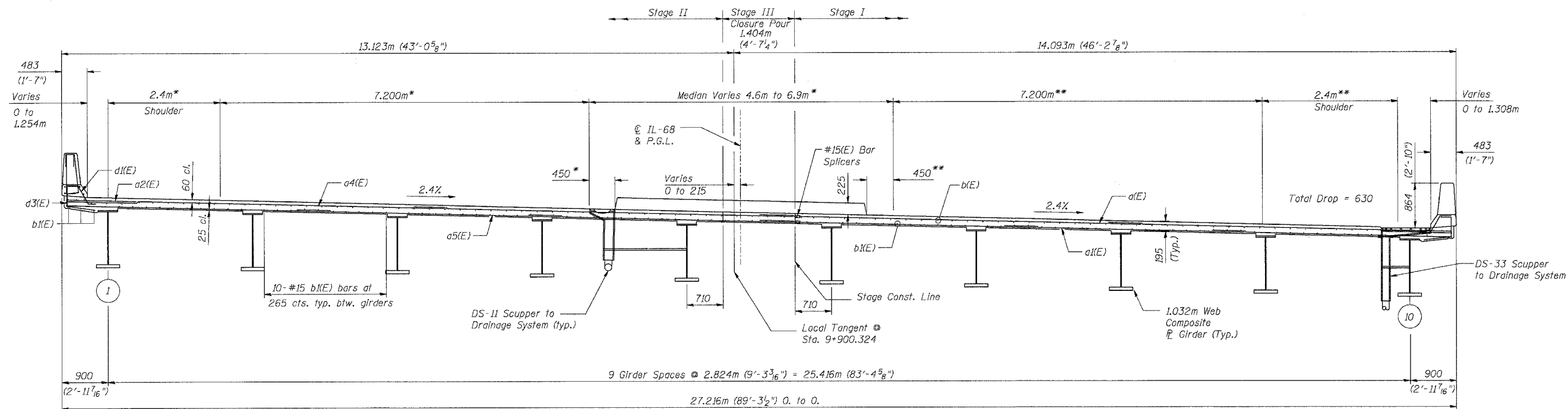


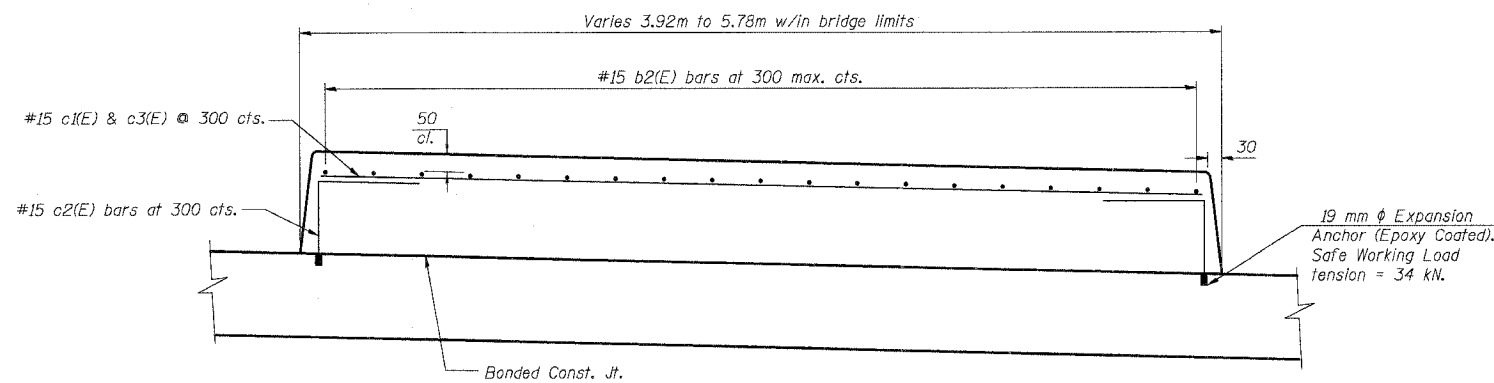
F.A.P. R.T.E.	SECTION	COUNTY	TOTAL SHEETS	SHEET NO.
343	700-Y-B-R	COOK	283	165
STA.		TO STA.		
FED. ROAD DIST. NO.		ILLINOIS FED. AID PROJECT		
CONTRACT NO. 62897				



**DECK CROSS SECTION**

(Looking East)  
(Horizontal Dimensions @ Rt. L's to Local Tangent unless noted otherwise.)

\* Radial Dimensions w/ respect to north shoulder line  
\*\* Radial Dimensions w/ respect to south shoulder line



**SUPERIMPOSED MEDIAN**

**NOTES:**

1. Reinforcement bars designated (E) shall be epoxy coated.
2. See Sht. S-12 of S-34 for superstructure details.
3. See Sht. S-13 of S-34 for parapet reinforcement and bill of material.

REVISIONS	
NAME	DATE

SHT. S-11 OF S-34

ILLINOIS DEPARTMENT OF TRANSPORTATION  
IL ROUTE 68 OVER UPRR  
F.A.P. ROUTE 343 SECTION 700-Y-B-R  
COOK COUNTY STATION 9+900.324  
STRUCTURE NO. 016-2732

DECK CROSS SECTION

DESIGNED: BTO      DRAWN: BTO  
DATE: 10/06      CHECKED: JAN      CHECKED: JAN

10/12/2006 2:38:54 PM