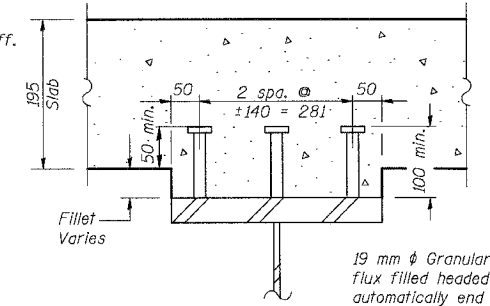
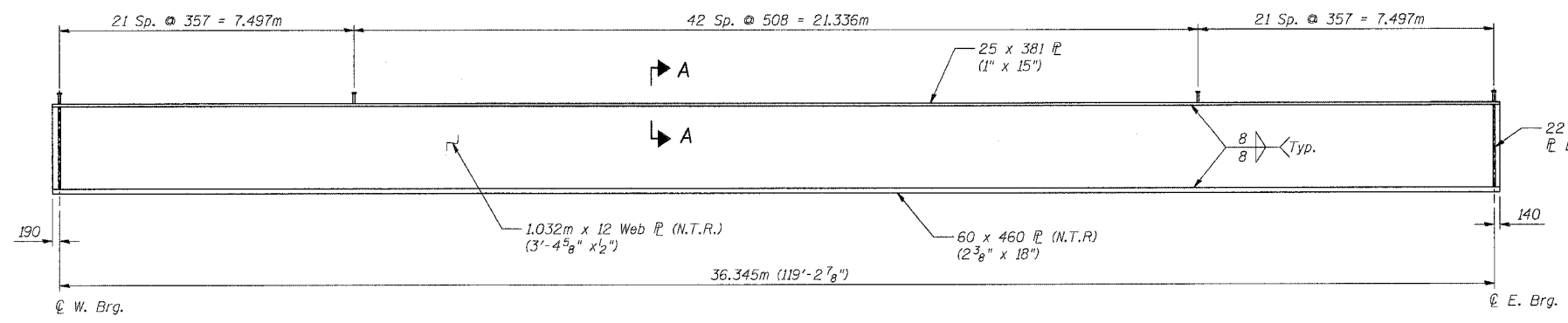


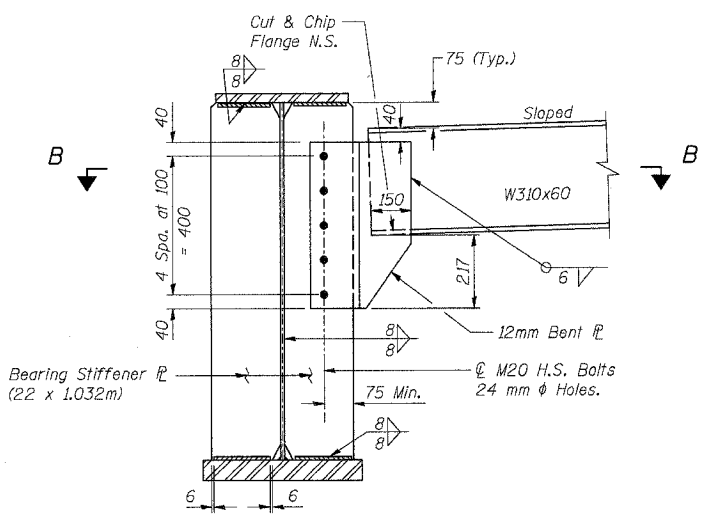
F.A.P. RTE.	SECTION	COUNTY	TOTAL SHEETS	SHEET NO.
343	70D-Y-B-R	COOK	283	173
STA.	TO STA.			
FED. ROAD DIST. NO.	ILLINOIS FED. AID PROJECT			
CONTRACT NO. 62897				



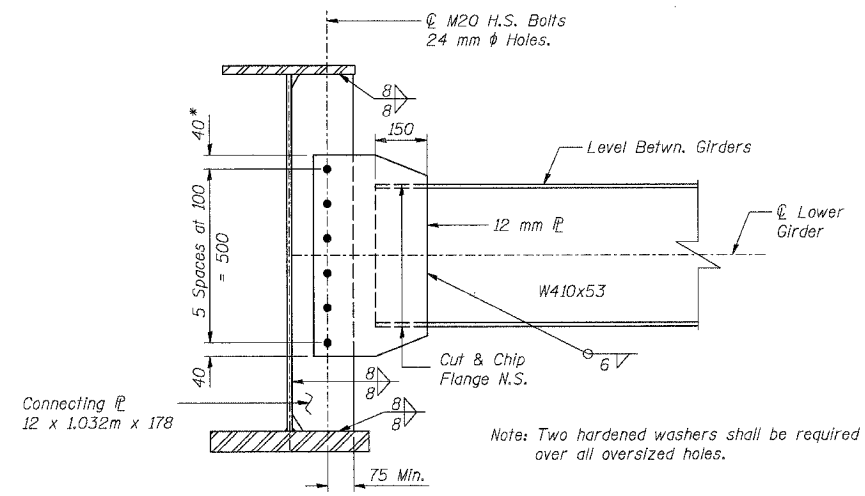
19 mm  $\phi$  Granular or solid flux filled headed studs automatically end welded to flange. (No. Req'd Per Girder = 255, Total No. Req'd = 2550)

**GIRDER ELEVATION**

**SECTION A-A**

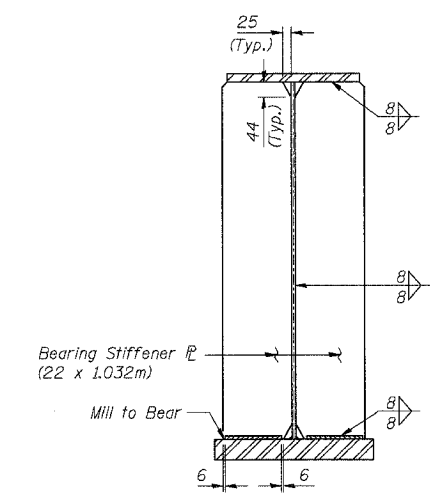


**END DIAPHRAGM D2**  
(18 Required)



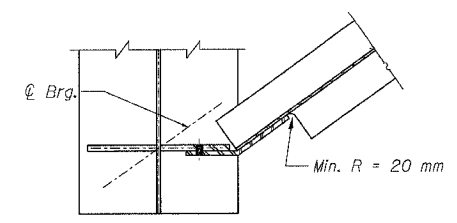
**DIAPHRAGM D1**  
(37 Required)

\* Provide 24 mm x 40 mm vertical slotted holes in 12 mm  $\bar{r}$  for diaphragms in stage construction bay, Stage II side. Increase 40 mm dimension to 60 mm in plate in stage construction bay, Stage II side. 8 mm structural plate washers shall be placed over slotted holes. Diaphragm in stage construction bay shall not be installed until after Stage II pour is completed. Slotted hole bolts shall be finger-tightened prior to the deck closure pour and fully-tightened after completion of the deck pour.

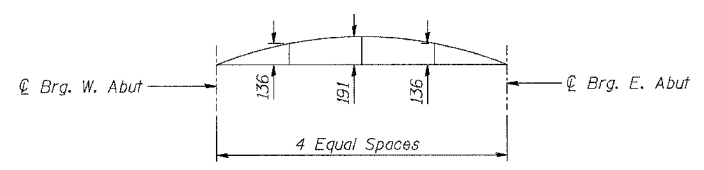


**BEARING STIFFENER**

FOR INFORMATION ONLY. INCLUDED IN BEAM FABRICATION CONTRACT EXCEPT STUD SHEAR CONNECTORS.



**SECTION B-B**



**CAMBER DIAGRAM**

GIRDER	WEST ABUT. BRG.	EAST ABUT. BRG.
1	269.368	269.680
2	269.323	269.623
3	269.277	269.565
4	269.230	269.506
5	269.183	269.446
6	269.136	269.386
7	269.088	269.325
8	269.039	269.263
9	268.990	269.200
10	268.940	269.137

**TOP OF WEB ELEVATIONS**  
(For Fabrication Use Only)

**BILL OF MATERIAL**

Item	Unit	Total
Stud Shear Connectors	Each	2550

**NOTES:**

- N.T.R. denotes members to which notch toughness requirements are applicable.
- All steel shown for the Girders and Bearing Stiffeners shall be AASHTO M270M Grade 345.
- All steel shown for the Diaphragm, Connecting Plates and Angles shall be AASHTO M270M Grade 250.

REVISIONS	
NAME	DATE

ILLINOIS DEPARTMENT OF TRANSPORTATION  
IL ROUTE 68 OVER UPRR  
F.A.P. ROUTE 343 SECTION 70D-Y-B-R  
COOK COUNTY STATION 9+900.324  
STRUCTURE NO. 016-2732  
**GIRDER ELEVATION & STEEL DETAILS**  
DESIGNED: JAN DRAWN: BTO  
DATE: 10/06 CHECKED: BTO CHECKED: JAN

SHT. S-19 OF S-34