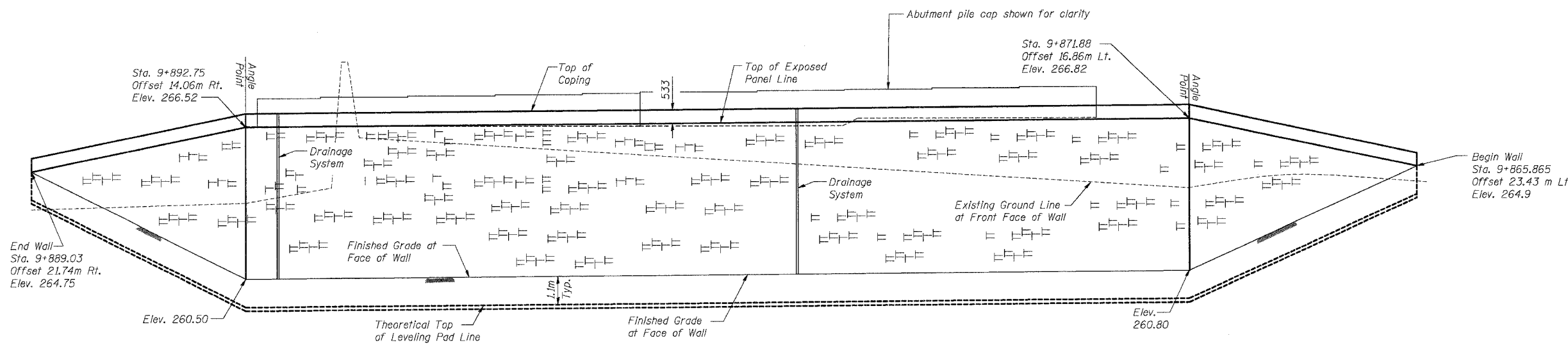
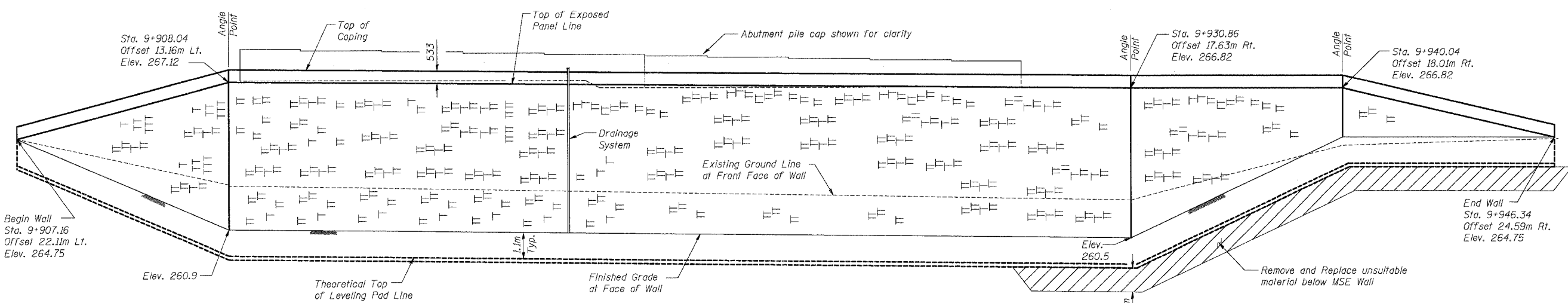


F.A.P. SECTION	COUNTY	TOTAL SHEETS	SHEET NO.
343 70D-Y-B-R	COOK	283	182
STA. TO STA.		ILLINOIS FED. AID PROJECT	
FED. ROAD DIST. NO.		CONTRACT NO. 62897	



**WEST ABUTMENT WALL**  
(Unfolded Elevation View)

Stationing and Offsets from  $\phi$  IL-68.



**EAST ABUTMENT WALL**  
(Unfolded Elevation View)

**BILL OF MATERIAL**

Item	Unit	Total
Mechanically Stabilized Earth Retaining Wall	SQ M	790

**NOTES:**

Stationing and Offsets from  $\phi$  IL-68.  
 For Plan of Mechanically Stabilized Earth Retaining Walls see sheet S-01 of S-34.  
 For Section Through MSE Retaining Walls see sheet S-02 of S-34.  
 Bearing Capacity of soil below MSE Wall is 215 kPa with a corresponding Factor of Safety of 2.5.

REVISIONS	
NAME	DATE

SHT. S-28 OF S-34  
 ILLINOIS DEPARTMENT OF TRANSPORTATION  
 IL ROUTE 68 OVER UPRR  
 F.A.P. ROUTE 343 SECTION 70D-Y-B-R  
 COOK COUNTY STATION 9+900.324  
 STRUCTURE NO. 016-2732  
**MECHANICALLY STABILIZED EARTH RETAINING WALLS**  
 DESIGNED: BTO DRAWN: BTO  
 DATE: 10/06 CHECKED: JAN CHECKED: JAN