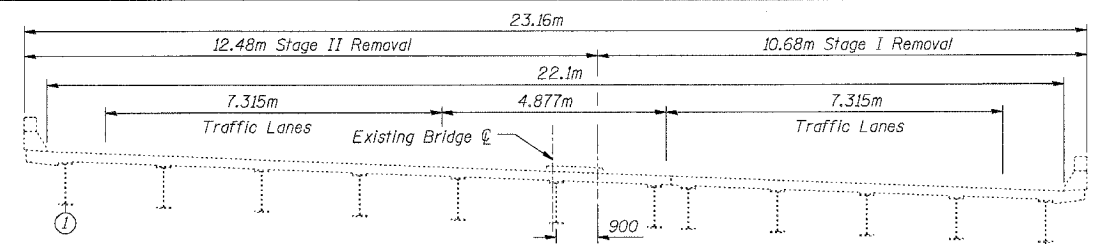
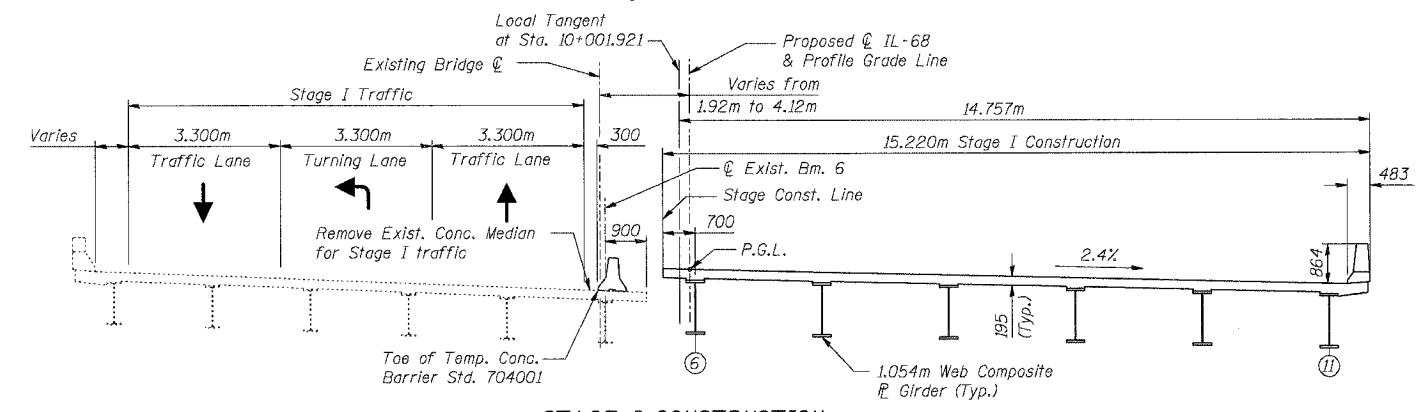


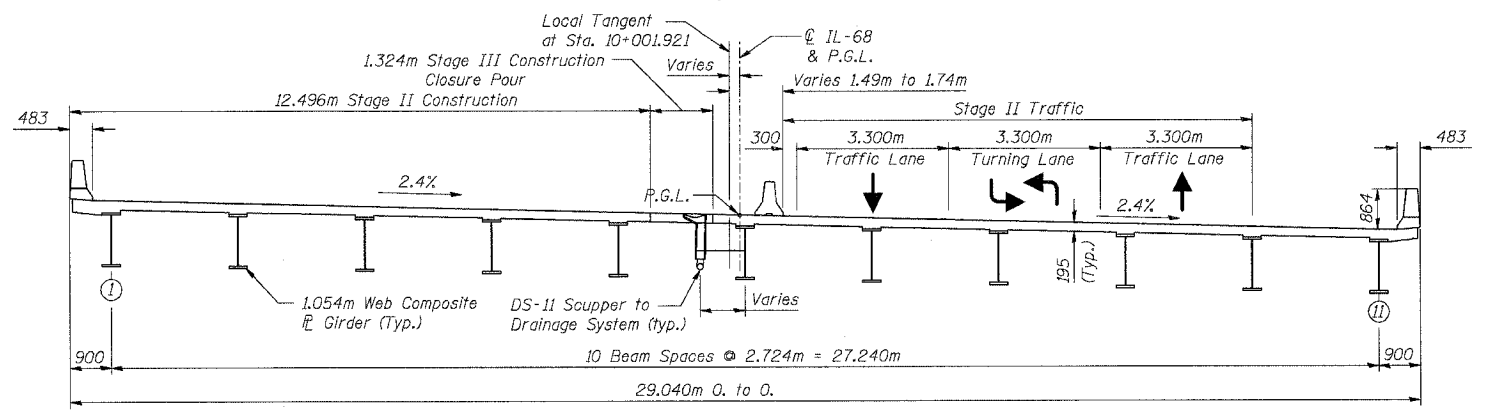
F.A.P. RTE.	SECTION	COUNTY	TOTAL SHEETS	SHEET NO.
343	70HB-R-1	COOK	283	191
STA.	TO STA.			
FED. ROAD DIST. NO.	ILLINOIS FED. AID PROJECT			
CONTRACT NO. 62897				



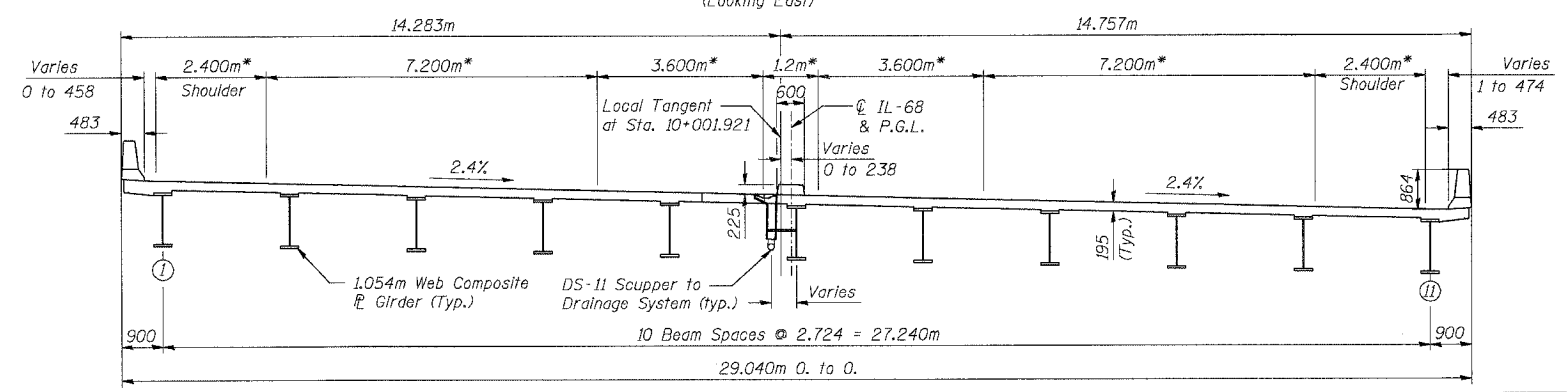
EXISTING CROSS SECTION
(Looking East)



STAGE I CONSTRUCTION
(Looking East)



STAGE II & III CONSTRUCTION
(Looking East)



TYPICAL SECTION THRU BRIDGE DECK
(Looking East)

- NOTES:**
1. See Sht. S-07 of S-27 for Temporary Concrete Barrier.
 2. See Roadway Plans for quantity of Temporary Concrete Barrier.

SHT. S-06 OF S-27

REVISIONS	
NAME	DATE

ILLINOIS DEPARTMENT OF TRANSPORTATION
 IL ROUTE 68 OVER US ROUTE 14
 F.A.P. ROUTE 343 SECTION 70HB-R-1
 COOK COUNTY STATION 10+001.778
 STRUCTURE NO. 016-2861

STAGE CONSTRUCTION DECK SECTIONS

DESIGNED: BTO DRAWN: BTO
 CHECKED: JAN CHECKED: JAN

DATE: 10/06



10/13/2006 2:37:32 PM