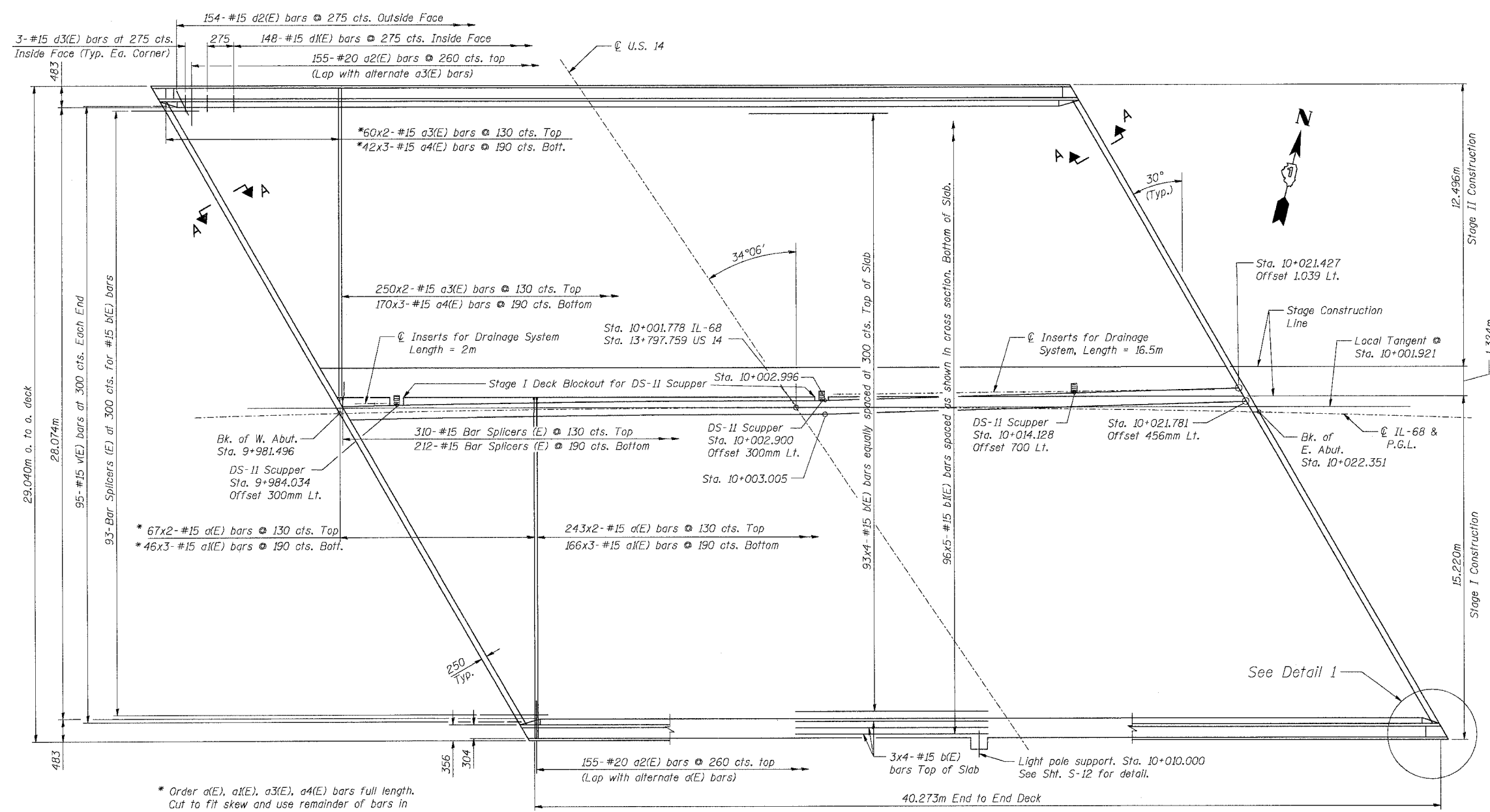
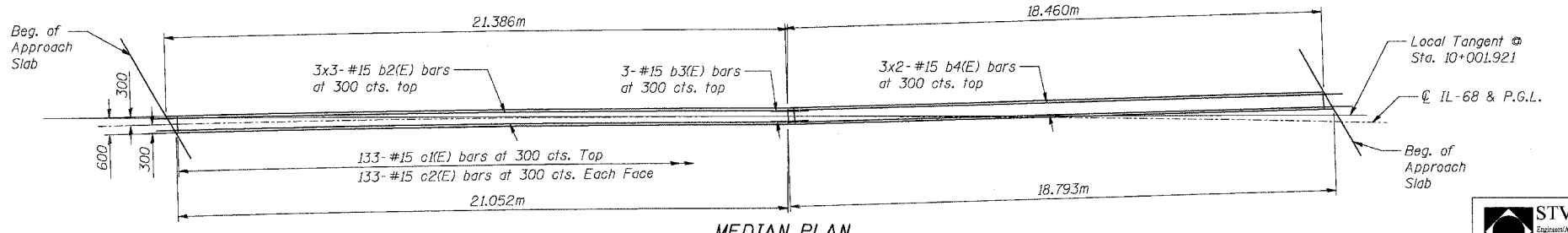


F.A.P. RTE.	SECTION	COUNTY	TOTAL SHEETS	SHEET NO.
343	70HB-R-1	COOK	283	195
STA.		TO STA.		
FED. ROAD DIST. NO.		ILLINOIS FED. AID PROJECT		

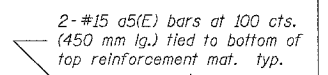
CONTRACT NO. 62897



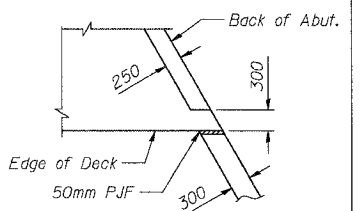
DECK PLAN



MEDIAN PLAN



DS-II SCUPPER PLAN



DETAIL 1

NOTES:

1. Bars Indicated thus 93x4-#15 etc. Indicates 93 lines of bars with 4 lengths per line.
  2. Reinforcing Bar designated (E) Shall be Epoxy Coated.
  3. Expansion Anchors Required at Medians See Sht. S-11 of S-27 for Superimposed Median Details.
  4. For Sections A-A, see Sht. S-12 of S-27.
- Minimum Lap  
 #15 Bars - 640  
 #20 Bars - 790

SHT. S-10 OF S-27

REVISIONS	
NAME	DATE



ILLINOIS DEPARTMENT OF TRANSPORTATION  
 IL ROUTE 68 OVER US ROUTE 14  
 F.A.P. ROUTE 343 SECTION 70HB-R-1  
 COOK COUNTY STATION 10+001.778  
 STRUCTURE NO. 016-2861

DECK PLAN  
 DESIGNED: BTO  
 CHECKED: JAN  
 DATE: 10/06

DRAWN: BTO  
 CHECKED: JAN