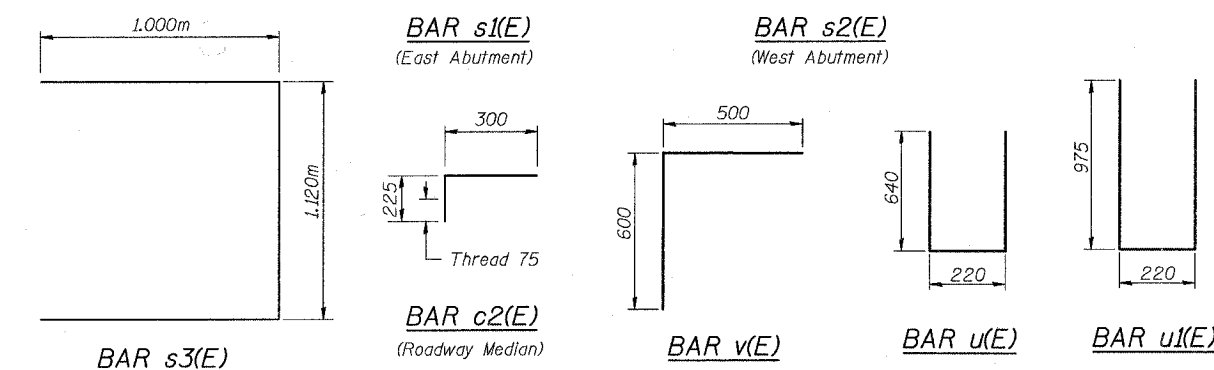
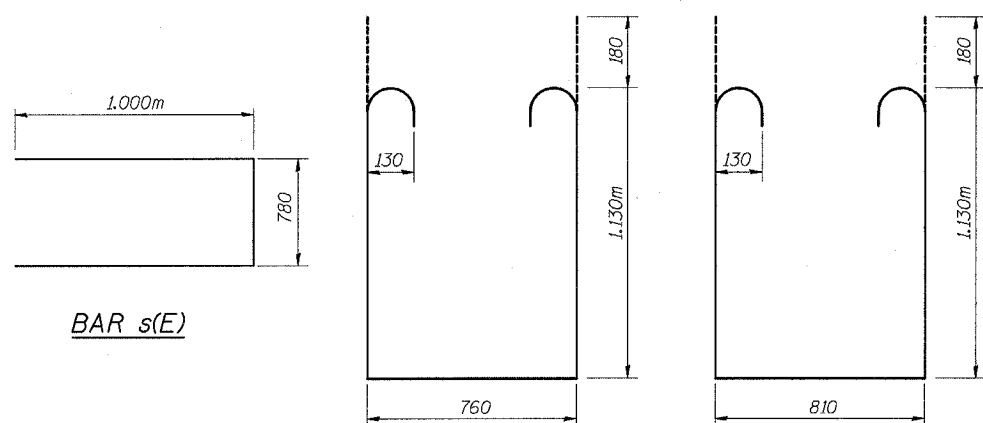
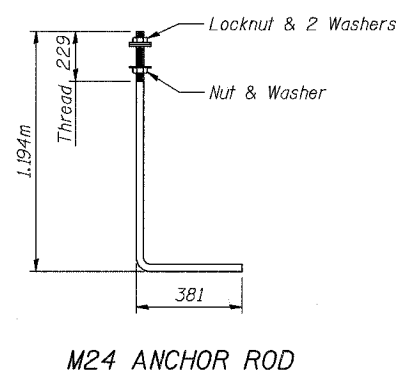
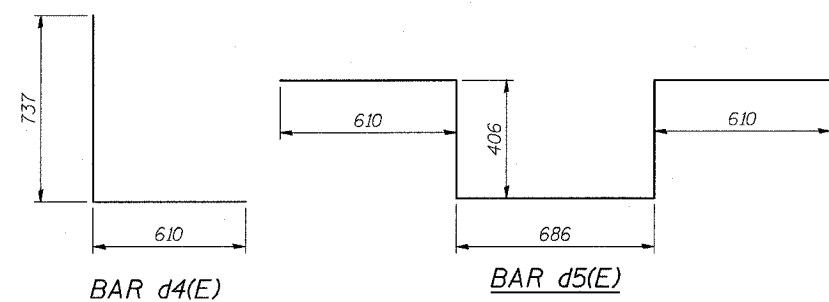
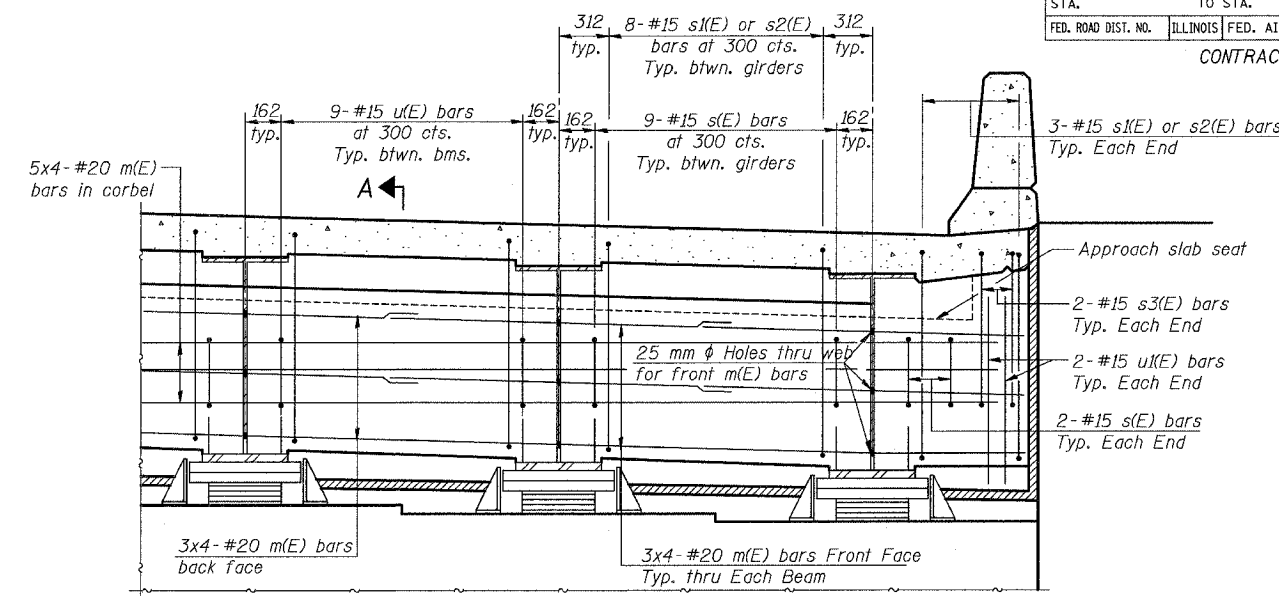
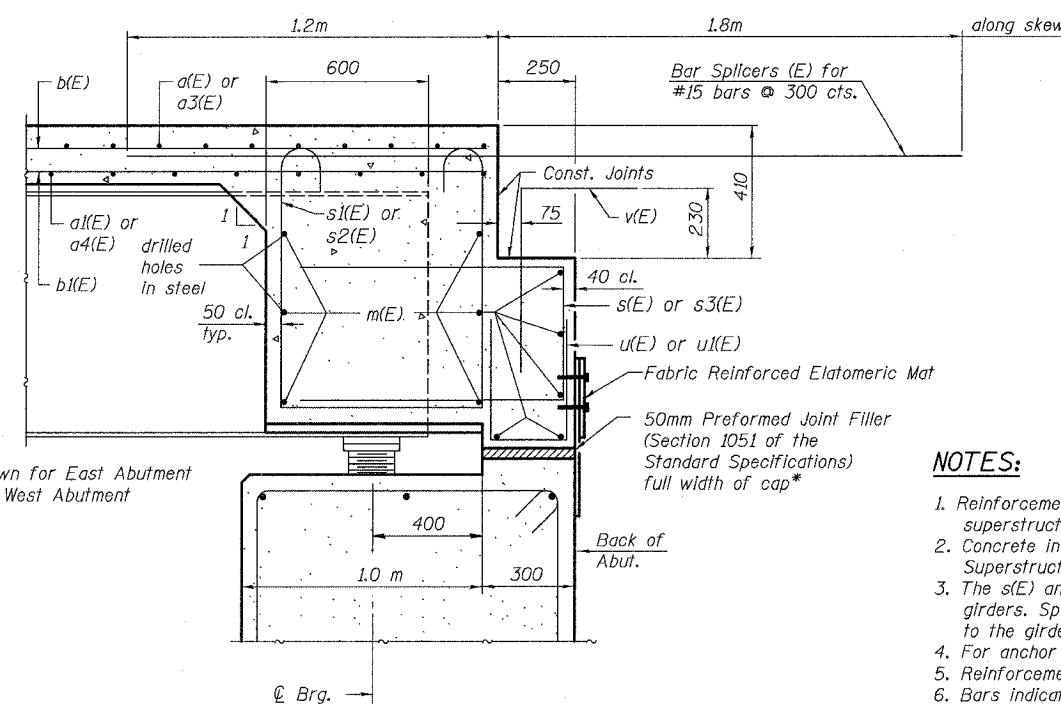


Note:
Cost of anchor rods and conduit is included with Concrete Superstructure



Elastomeric Bearing shown for East Abutment
Fixed Bearing at West Abutment



Dimensions at right angles to abutment, except as shown.
* Cost included with Concrete Superstructure.

NOTES:

1. Reinforcement bars in diaphragm are billed with superstructure on sheet S-13 of S-27.
2. Concrete in diaphragm is included with Concrete Superstructure on sheet of S-13 of S-27.
3. The s(E) and s1(E) bars shall be placed parallel to the girders. Spacing for these bars shall be at right angles to the girders.
4. For anchor bolt details see sheet of S-19 of S-27.
5. Reinforcement bars designated (E) shall be epoxy coated.
6. Bars indicated thus 5x4 -#20 etc. indicates 5 lines of bars with 4 lengths per line.

MIN. BAR LAP

#20 bar = 790

SHT. S-12 OF S-27

REVISIONS		ILLINOIS DEPARTMENT OF TRANSPORTATION IL ROUTE 68 OVER US ROUTE 14 F.A.P. ROUTE 343 SECTION 70HB-R-1 COOK COUNTY STATION 10+001.778 STRUCTURE NO. 016-2861 SUPERSTRUCTURE DETAILS
NAME	DATE	
		DESIGNED: BTO DRAWN: BTO DATE: 10/06 CHECKED: JAN CHECKED: JAN

