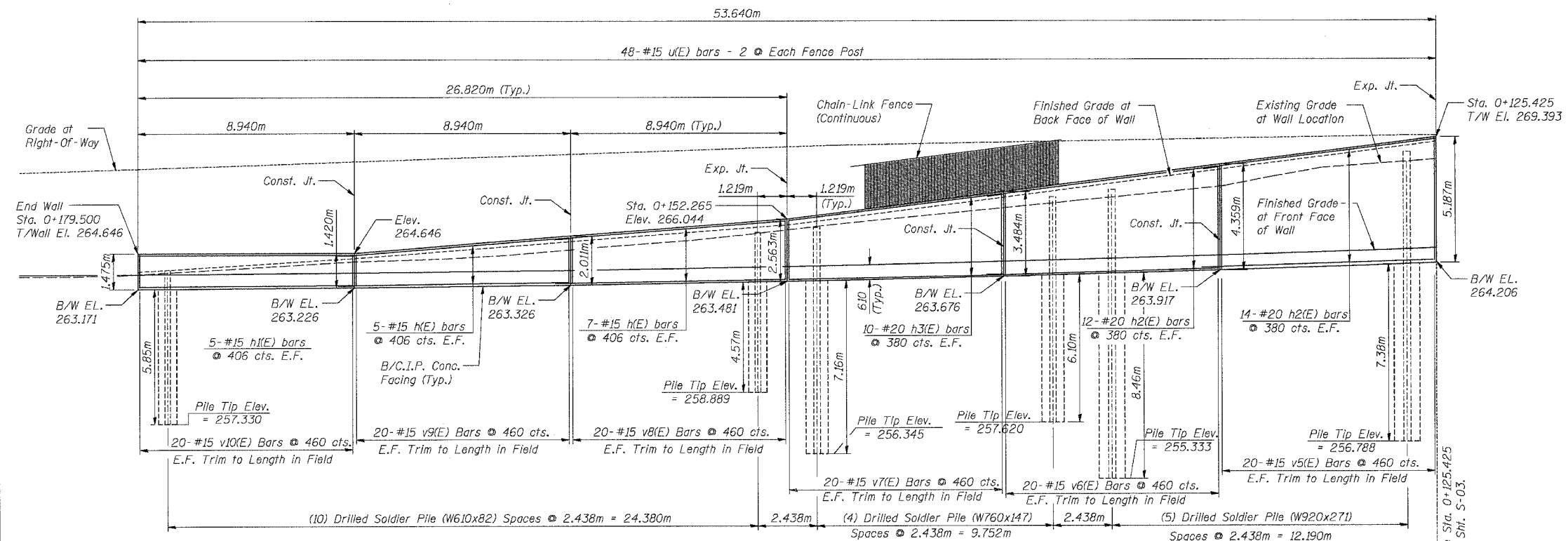


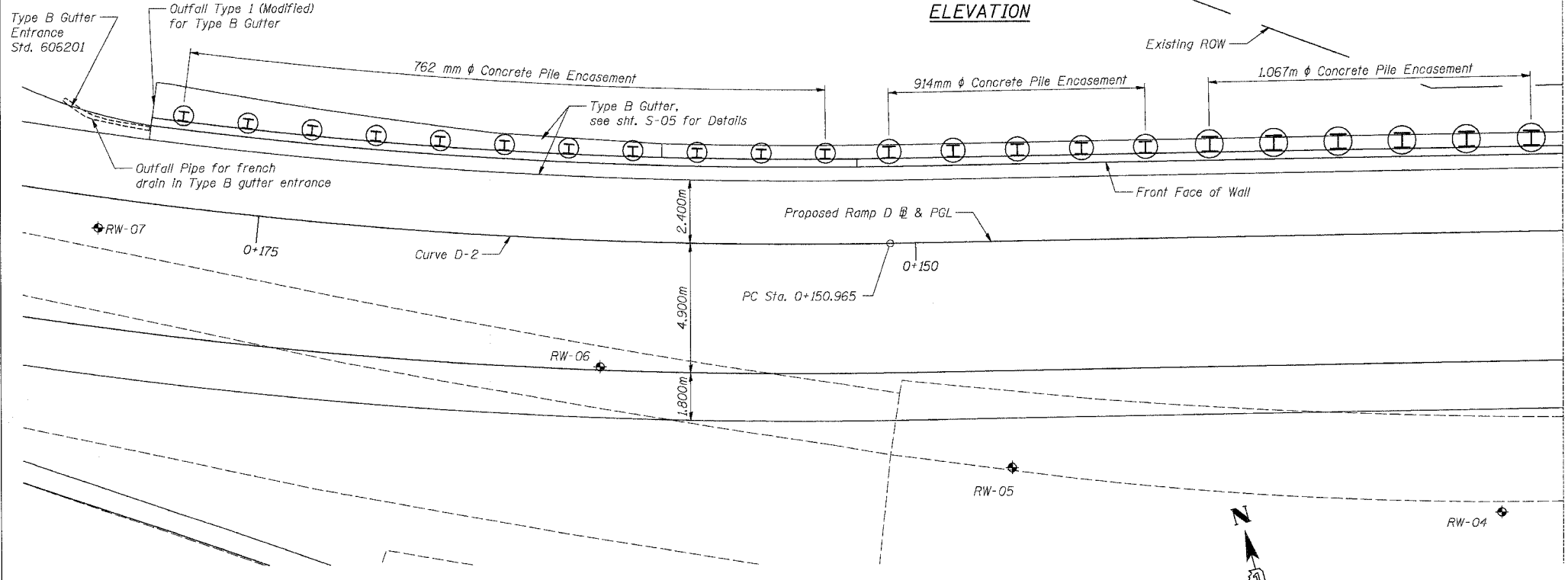
F.A.P. RTE.	SECTION	COUNTY	TOTAL SHEETS	SHEET NO.
343	70HB-R-1	COOK	283	216
STA.		TO STA.		
FED. ROAD DIST. NO.		ILLINOIS FED. AID PROJECT		
CONTRACT NO. 62897				



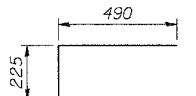
BILL OF MATERIAL

Bar	No.	Size	Length (m)	Shape
h(E)	46	15	9.600	—
h1(E)	24	15	8.840	—
h2(E)	98	20	9.800	—
h3(E)	48	20	8.840	—
v(E)	40	15	1.740	—
v1(E)	40	15	2.090	—
v2(E)	40	15	2.580	—
v3(E)	40	15	3.670	—
v4(E)	40	15	4.770	—
v5(E)	80	15	5.110	—
v6(E)	40	15	4.280	—
v7(E)	40	15	3.400	—
v8(E)	40	15	2.480	—
v9(E)	40	15	1.930	—
v10(E)	40	15	1.390	—
u(E)	96	15	1.210	□
Reinforcement Bars, Epoxy Coated			Kg	6,340
Concrete Structures			CU M	97.1

ELEVATION



PLAN



BAR u(E)

NOTES:

- All dimensions in millimeters (mm) except as noted.
- Reinforcement bars designated (E) shall be epoxy coated.
- See Sht. S-05 for typical wall sections and details.
- See Sht. S-06 for Fence details.
- E.F. = Each Face
B/W = Bottom of Wall
- Min. Bar Lap
#15 = 640
#20 = 790

REVISIONS	NAME	DATE

STV Incorporated
 Engineers/Architects/Planners/Construction Managers
 200 W. Monroe Street, Suite 1650
 Chicago, IL 60606-8013
 312.453-0685, FAX 312.853-0661

ILLINOIS DEPARTMENT OF TRANSPORTATION
 IL ROUTE 68 F.A.P. ROUTE 343
 SECTION 70HB-R-1 COOK COUNTY
 DRILLED SOLDIER PILE WALL
 STATION 0+072.591 TO 0+179.500
 STRUCTURE NO. 016-W979
 SOLDIER PILE WALL PLAN & ELEVATION
 STA. 0+125.425 TO STA. 0+179.500
 DESIGNED: BTO DRAWN: BTO
 DATE: 10/06 CHECKED: JAN CHECKED: JAN

SHT. S-04 OF S-08