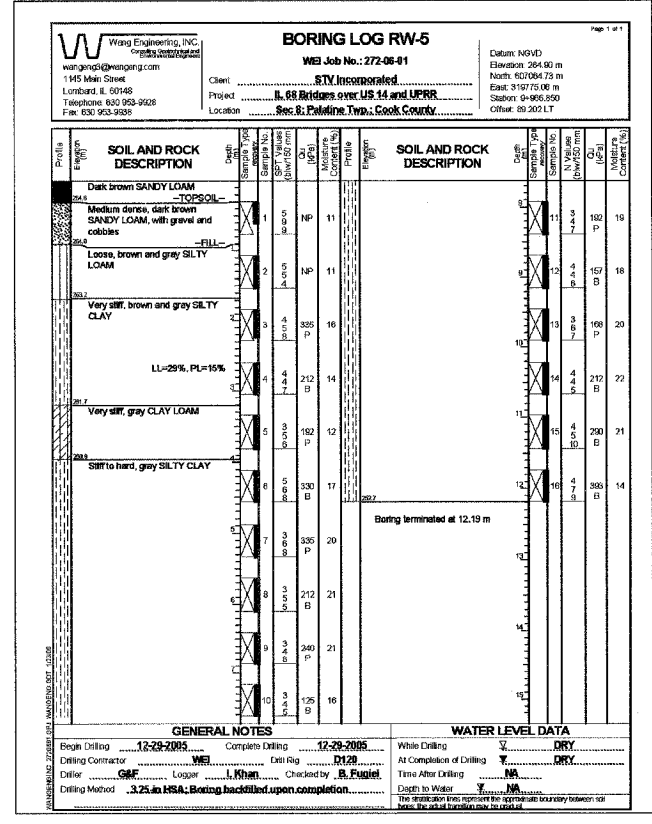
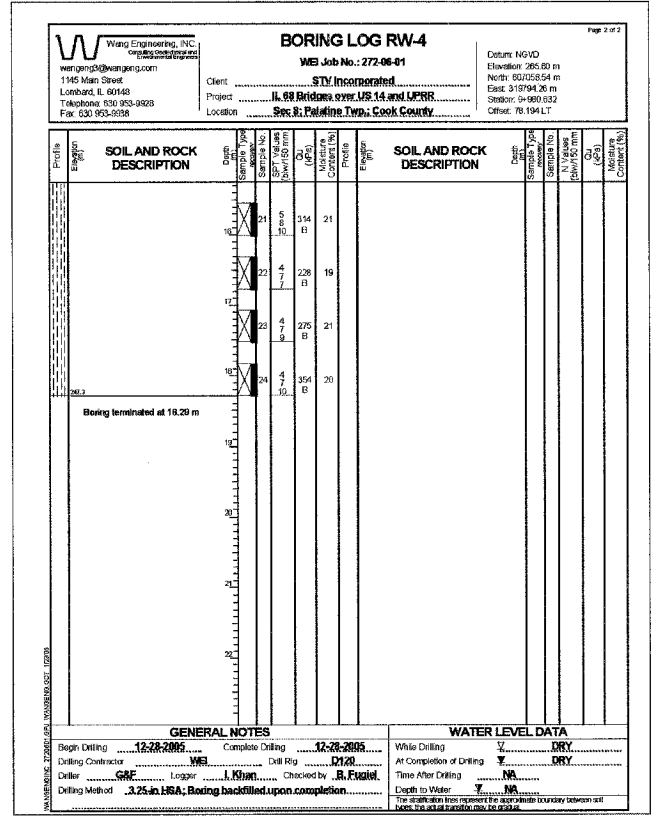
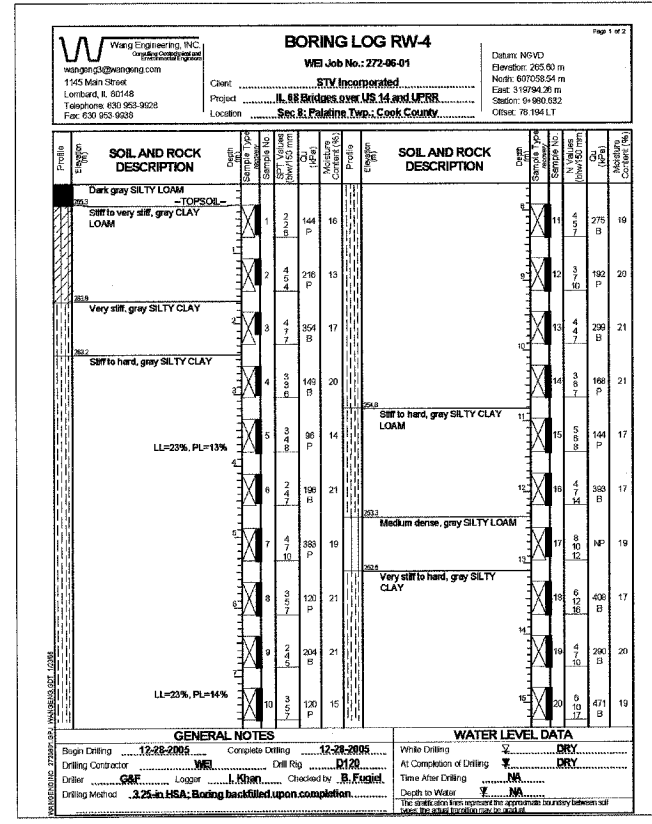
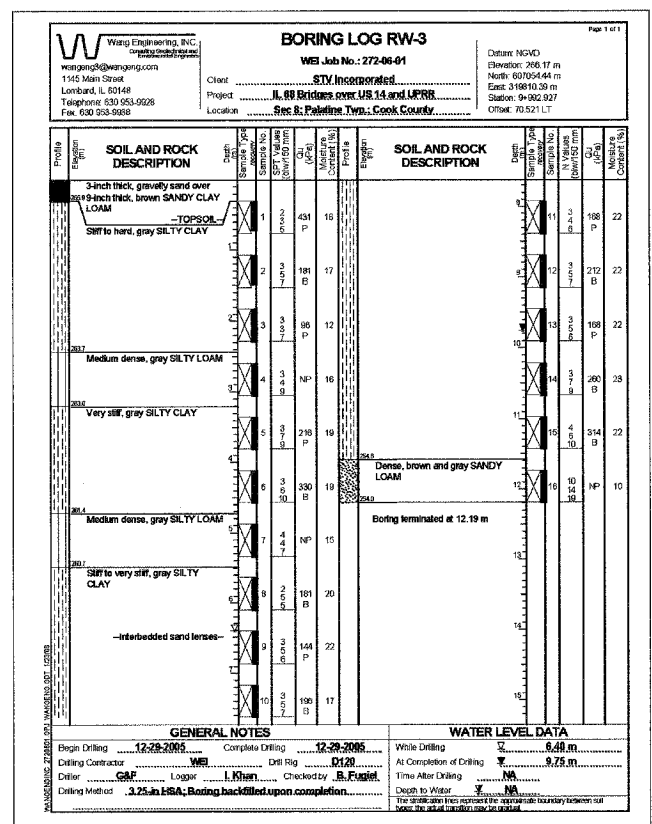
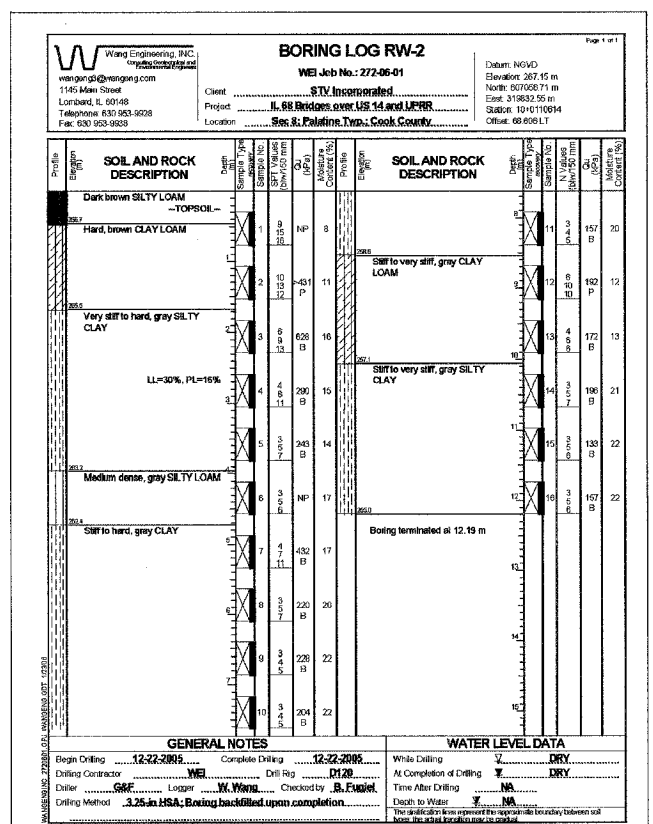
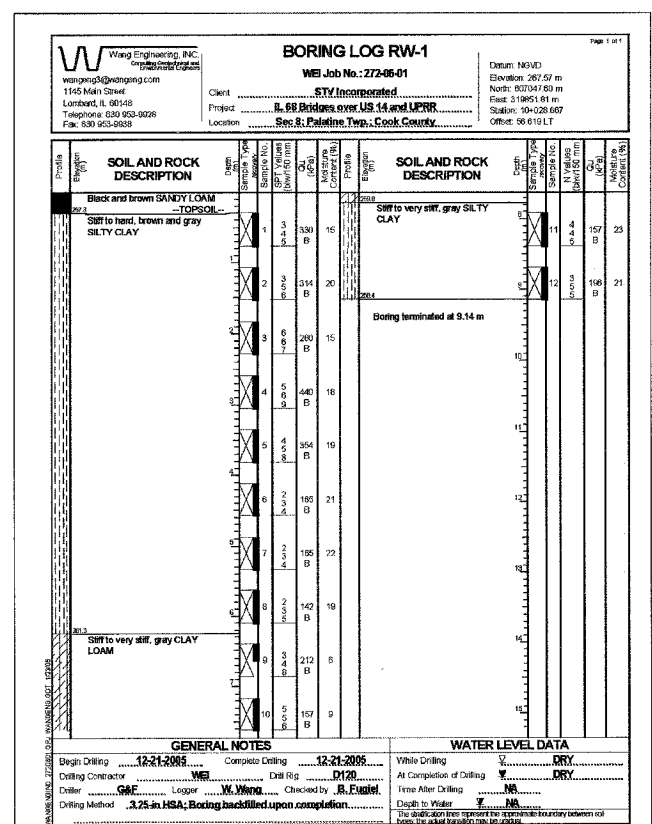


F.A.P. RTE.	SECTION	COUNTY	TOTAL SHEETS	SHEET NO.
343	70HB-R-1	COOK	283	219
STA.		TO STA.		
FED. ROAD DIST. NO.		ILLINOIS FED. AID PROJECT		
CONTRACT NO. 62897				



SHT. S-07 OF S-08

REVISIONS	
NAME	DATE

ILLINOIS DEPARTMENT OF TRANSPORTATION
 IL ROUTE 68 F.A.P. ROUTE 343
 SECTION 70HB-R-1 COOK COUNTY
 DRILLED SOLDIER PILE WALL
 STATION 0+072.591 TO 0+179.500
 STRUCTURE NO. 016-W979

BORING LOGS

DESIGNED: BTO DRAWN: BTO
 CHECKED: JAN CHECKED: JAN

DATE: 10/06