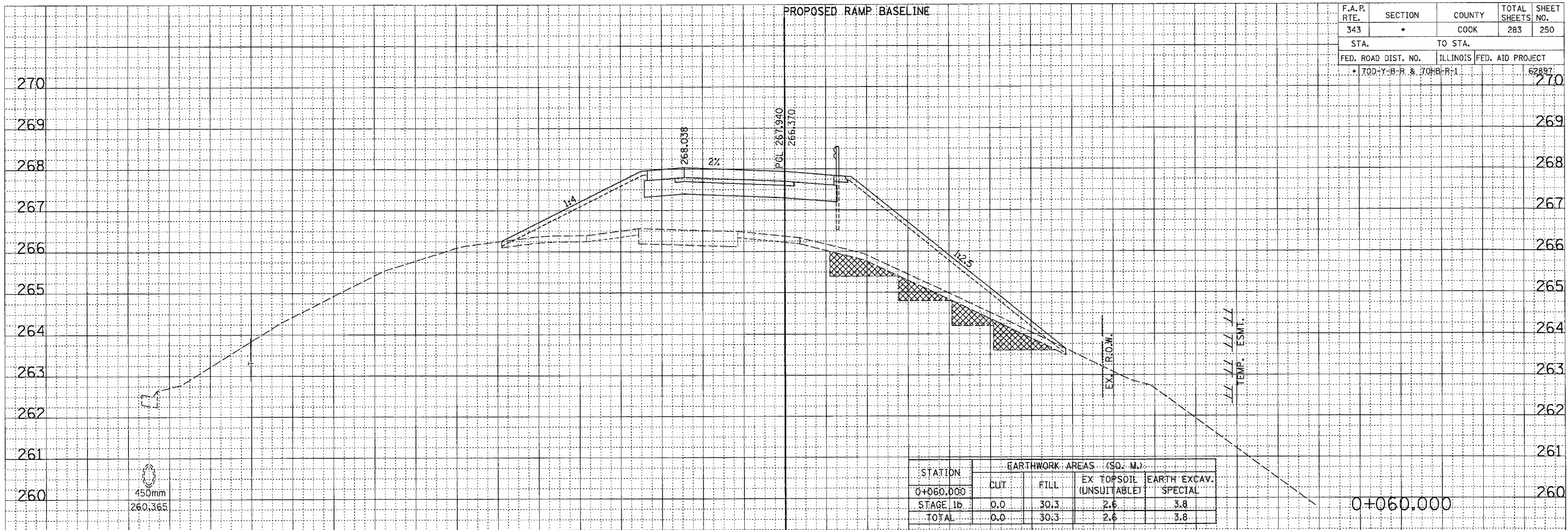
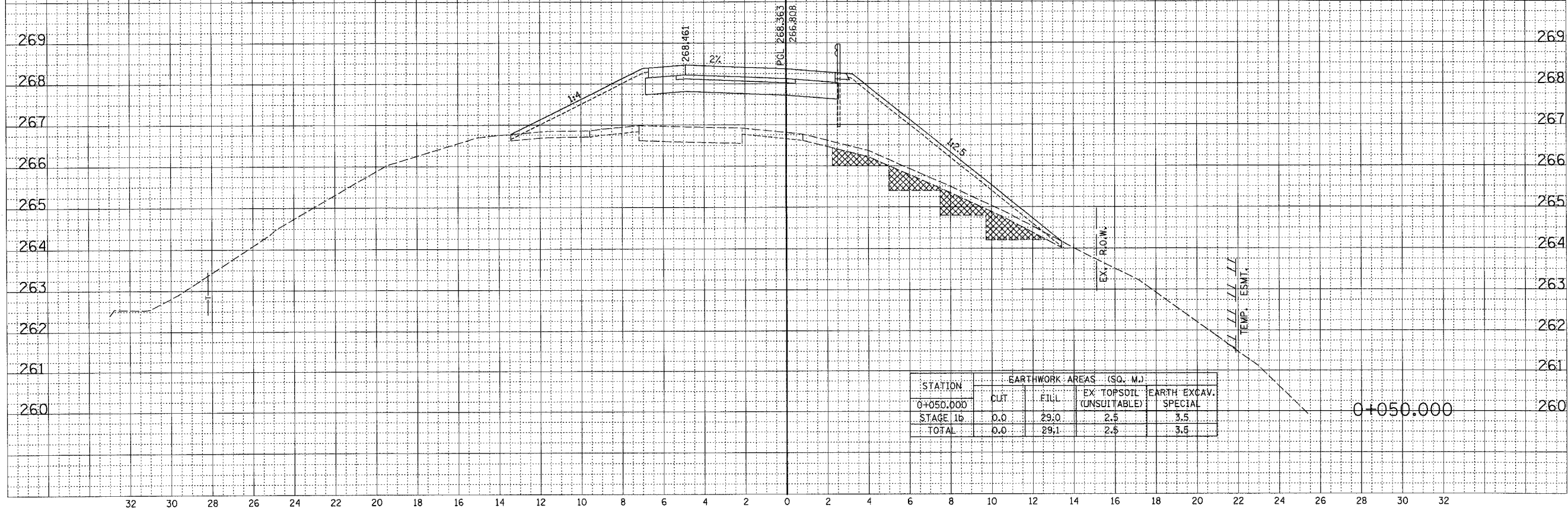


F.A.P. RTE.	SECTION	COUNTY	TOTAL SHEETS	SHEET NO.
343	•	COOK	283	250
STA.		TO STA.		
FED. ROAD DIST. NO.		ILLINOIS FED. AID PROJECT		62887
• 700-Y-B-R & 700-B-R-1				

DATE	BY
FINAL SURVEY	SURVEYED
NOTE BOOK	PLOTTED
NO.	AREAS
	CHECKED



DATE	BY
ORIGINAL SURVEY	REWORKED
NOTE BOOK	PLOTTED
NO.	AREAS
	CHECKED



RAMP B