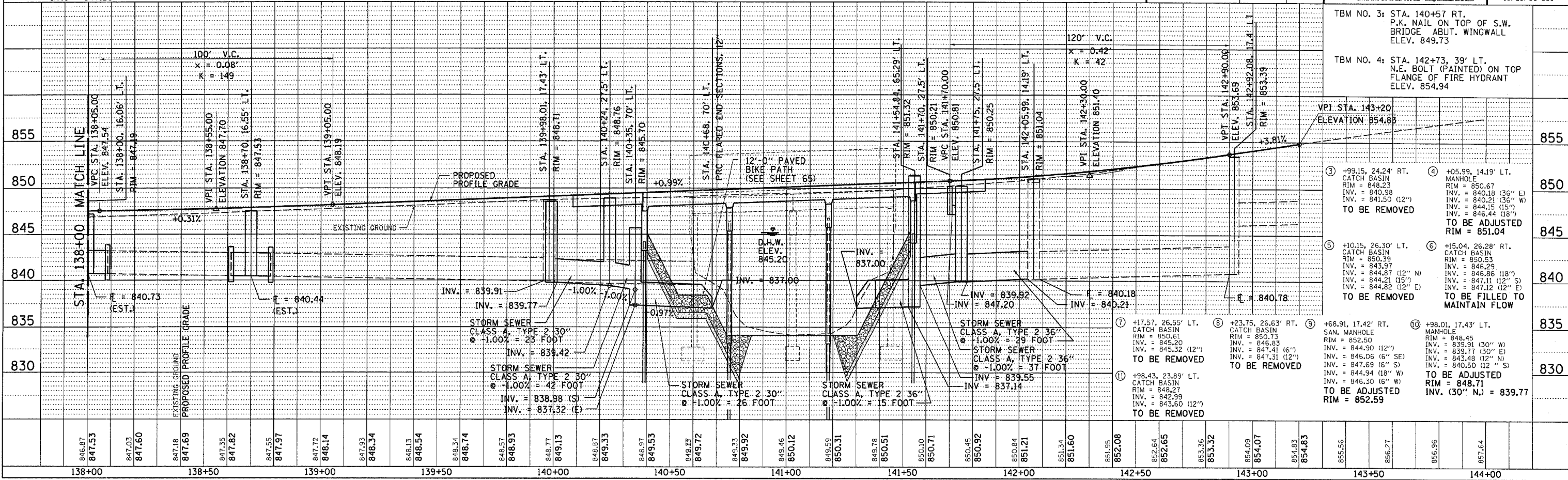
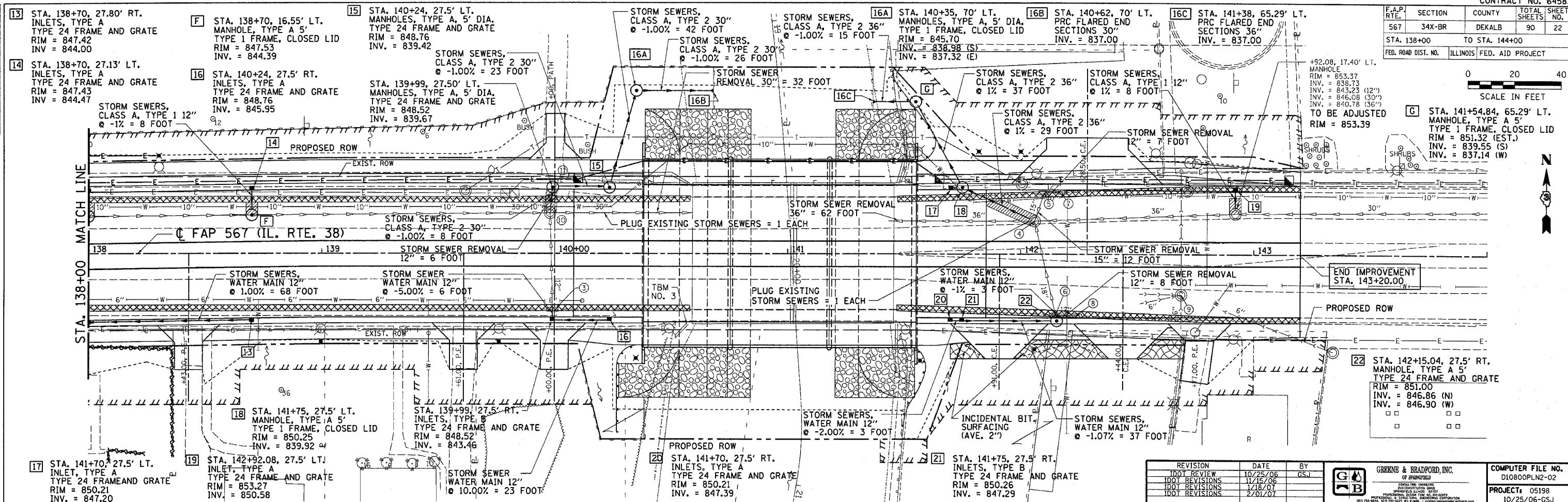


F.A.P. RTE.	SECTION	COUNTY	TOTAL SHEETS	SHEET NO.
567	34X-BR	DEKALB	90	22
STA. 138+00		TO STA. 144+00		
FED. ROAD DIST. NO.		ILLINOIS	FED. AID PROJECT	

0 20 40
SCALE IN FEET



REVISION	DATE	BY
1	10/25/06	GSJ
2	11/25/06	
3	1/16/07	
4	2/01/07	

GREENE & BRADFORD, INC.
CONSULTING ENGINEERS
PROFESSIONAL ENGINEER
ILLINOIS LICENSE NO. 021-000000000
1015 W. 80th St., Suite 100, Oak Brook, IL 60171

COMPUTER FILE NO.
D10800PLN2-02

PROJECT: 05198
10/25/06-GSJ

TBM NO. 3: STA. 140+57 RT. P.K. NAIL ON TOP OF S.W. BRIDGE ABUT. WINGWALL ELEV. 849.73

TBM NO. 4: STA. 142+73, 39' LT. N.E. BOLT (PAINTED) ON TOP FLANGE OF FIRE HYDRANT ELEV. 854.94

VPI STA. 143+20
ELEVATION 854.88

③ +99.15, 24.24' RT. CATCH BASIN
RIM = 849.23
INV. = 841.50 (12")
TO BE REMOVED

④ +05.99, 14.19' LT. MANHOLE
RIM = 850.67
INV. = 840.18 (36" E)
INV. = 840.21 (36" W)
INV. = 844.15 (15")
INV. = 846.44 (18")
TO BE ADJUSTED
RIM = 851.04

⑤ +10.15, 26.30' LT. CATCH BASIN
RIM = 850.39
INV. = 843.97
INV. = 844.87 (12" N)
INV. = 844.21 (15" S)
INV. = 844.82 (12" E)
TO BE REMOVED

⑥ +15.04, 26.28' RT. CATCH BASIN
RIM = 850.53
INV. = 846.29
INV. = 846.86 (18" N)
INV. = 847.41 (12" S)
INV. = 847.12 (12" E)
TO BE FILLED TO MAINTAIN FLOW

⑦ +17.57, 26.55' LT. CATCH BASIN
RIM = 850.61
INV. = 845.20
INV. = 845.32 (12")
TO BE REMOVED

⑧ +23.75, 26.63' RT. CATCH BASIN
RIM = 850.73
INV. = 846.83
INV. = 847.41 (6")
INV. = 847.31 (12")
TO BE REMOVED

⑨ +68.91, 17.42' RT. SAN. MANHOLE
RIM = 852.50
INV. = 839.91 (12")
INV. = 846.06 (6" SE)
INV. = 847.69 (6" S)
INV. = 844.94 (18" W)
INV. = 846.30 (6" W)
TO BE ADJUSTED
RIM = 848.71
INV. (30" N.) = 839.77

⑩ +98.01, 17.43' LT. MANHOLE
RIM = 848.45
INV. = 839.77 (30" E)
INV. = 843.48 (12" N)
INV. = 840.50 (12" S)
TO BE ADJUSTED
RIM = 848.71
INV. (30" N.) = 839.77