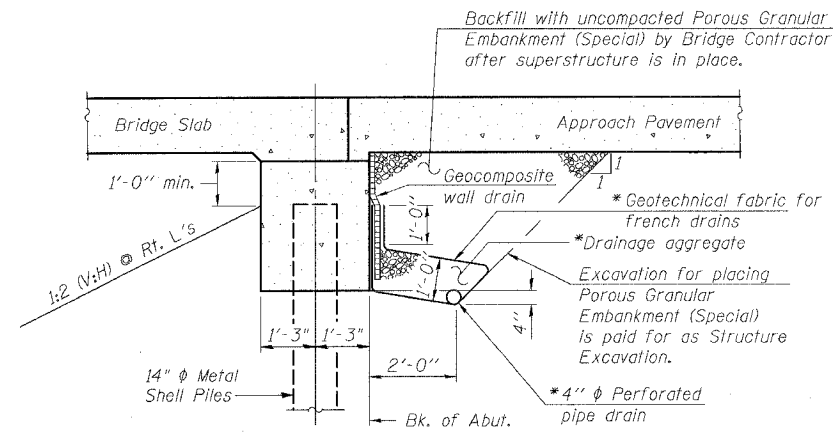


STATE OF ILLINOIS
DEPARTMENT OF TRANSPORTATION

ROUTE NO.	SECTION	COUNTY	TOTAL SHEETS	SHEET NO.	SHEET NO. 2 14 SHEETS
FAU 567 (IL 38)	34-XBR	DEKALB	90	33	
FED. ROAD DIST. NO.	ILLINOIS	FED. PROJ. NO.	PROJECT		

Contract No. 64583



SECTION THRU ABUTMENT

* Included in the cost of Pipe Underdrains for Structures, 4"

Note:

All drainage system components shall extend to 2'-0" from the end of each wingwall except an outlet pipe shall extend until intersecting with the side slopes. The pipes shall drain into concrete headwalls. (See Article 601.05 of the Standard Specifications and Highway Standard 601101).

LIST OF SHEETS

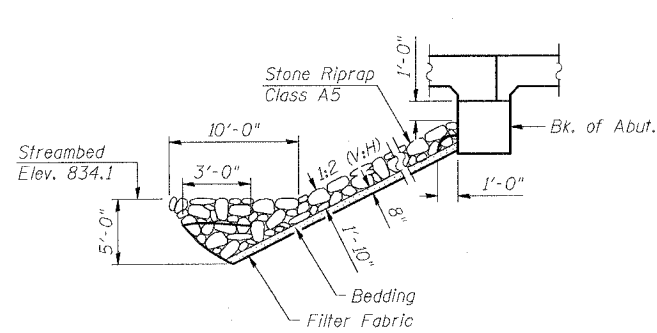
1. General Plan & Elevation
2. General Notes & Details
3. Stage Construction Details
4. Temporary Concrete Barrier
5. Superstructure
6. Superstructure Details
7. Railing Details
8. West Abutment
9. East Abutment
10. Piers
11. Bar Splicer Assembly Details
12. Concrete Pile Details
13. Boring Logs
14. Boring Logs

GENERAL NOTES

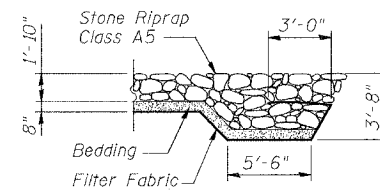
Reinforcement bars shall conform to the requirements of AASHTO M 31 or M 322 Grade 60.
Layout of slope protection system may be varied in the field to suit ground conditions as directed by the Engineer.
The Contractor shall make allowance for the deflection of forms, shrinkage and settlement of falsework. In addition to allowance for dead load deflection.
The Contractor shall drive 1 Metal Shell test pile in a permanent location at Pier 1, as directed by the Engineer before ordering the remainder of piles.
All construction joints shall be bonded.
Excavation behind existing abutment walls shall be done before removing the existing superstructure. The Contractor shall sawcut the existing abutments at the stage removal line before stage 1 removal.

TOTAL BILL OF MATERIAL

ITEM	UNIT	SUPER	SUB	TOTAL
Porous Granular Embankment (Special)	Cu. Yd.	-	220.0	220.0
Stone Riprap, Class A5	Sq. Yd.	-	1050	1050
Removal of Existing Structures	Each	-	-	1
Structure Excavation	Cu. Yd.	-	140	140
Concrete Structures	Cu. Yd.	-	244.5	244.5
Concrete Superstructure	Cu. Yd.	642.4	-	642.4
Bridge Deck Grooving	Sq. Yd.	741	-	741
Protective Coat	Sq. Yd.	1114	-	1114
Reinforcement Bars, Epoxy Coated	Pound	142,260	19,600	161,860
Furnishing Metal Shell Piles 12"	Foot	-	2580	2580
Furnishing Metal Shell Piles 14"	Foot	-	658	658
Driving Piles	Foot	-	3238	3238
Test Pile Metal Shells	Each	-	1	1
Name Plates	Each	1	-	1
Geocomposite Wall Drain	Sq. Yd.	-	96	96
Pipe Underdrains for Structures, 4"	Foot	-	188	188
Temporary Soil Retention System	Sq. Ft.	-	342	342
Underwater Structure Excavation Protection - Location 1	Each	-	1	1
Underwater Structure Excavation Protection - Location 2	Each	-	1	1
Bar Splicers	Each	229	76	305
Filter Fabric	Sq. Yd.	-	1050	1050
Concrete Bridge Rail, Sidewalk Mounted	Foot	224	-	224
Anchor Rods	Each	16	-	16
Asbestos Bearing Pad Removal	Each	16	-	16



STONE RIPRAP ANCHOR DETAIL



SECTION A-A

ILLINOIS DEPARTMENT OF TRANSPORTATION

GENERAL NOTES AND DETAILS

F.A.U. ROUTE 567 (IL 38) OVER
SOUTH BRANCH OF THE KISHWAUKEE RIVER
DEKALB COUNTY - SEC. 34-XBR
STA. 140+96.71
S.N. 019-0044

SCALE: VERT.
HORIZ.
DATE: 7/6/05

DRAWN BY: LANDREY
DESIGNED BY: TRELLO
CHECKED BY: SANFORD

REVISIONS	
NAME	DATE

GREENE & BRADFORD, INC.
OF SPRINGFIELD
REGISTERED PROFESSIONAL ENGINEERS
PROFESSIONAL DESIGN FIRM NO. 0028
PROFESSIONAL & CONSULTING ENGINEERS
227 1/2 S.W. 10th St., Springfield, IL 62761-1000
Tel: 217-223-1237 Fax: 217-223-1238
www.greenebro.com

COMPUTER FILE NO.
SN019-0044DET
PROJECT 05198
1/18/07-MML

FILE NAME = J:\05198\DRAWINGS\SN019-0044\SN019-0044.dgn
PLOT DATE = 7/18/2007
PLOT TIME = 10:20:59 AM
OPERATOR = michellel