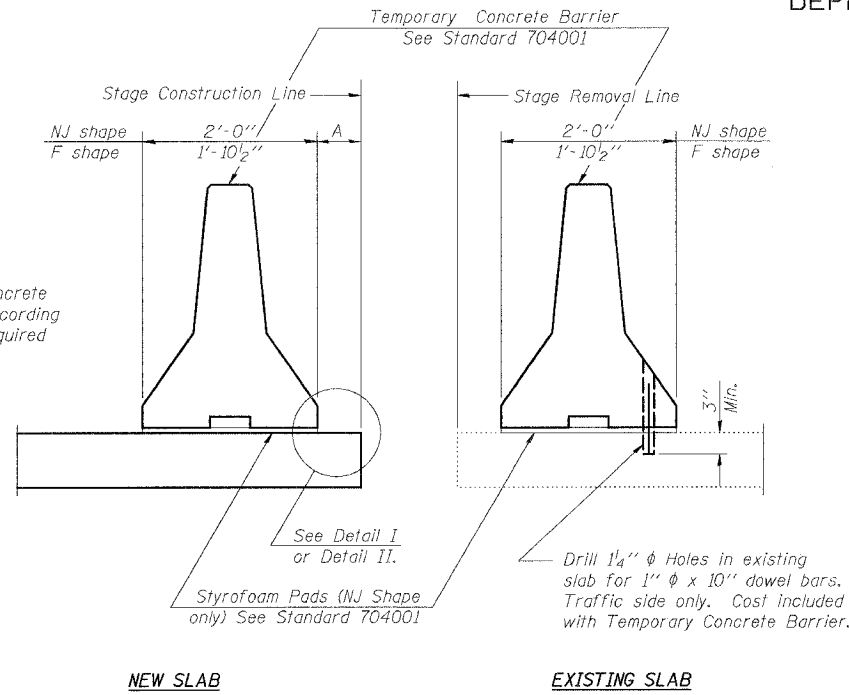


STATE OF ILLINOIS
DEPARTMENT OF TRANSPORTATION

ROUTE NO.	SECTION	COUNTY	CONTRACT NO.	SHEET NO.	SHEET NO. 4 14 SHEETS
FAU 567 (IL 38)	34-XBR	DEKALB	90	35	
FED. ROAD DIST. NO.	ILLINOIS	FED. AID PROJECT-	Contract No. 64583		



When "A" is 3'-6" or less, the temporary concrete barrier shall be anchored to the new slab according to Detail I or Detail II. No anchorage is required when "A" is greater than 3'-6".

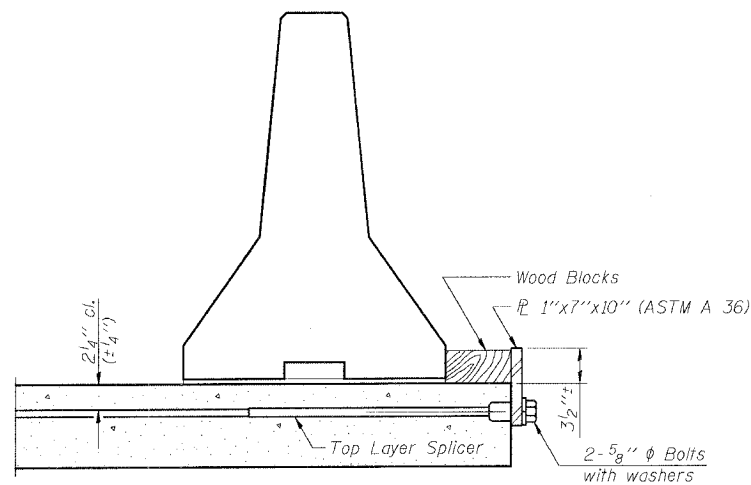
NEW SLAB

EXISTING SLAB

SECTIONS THRU SLAB

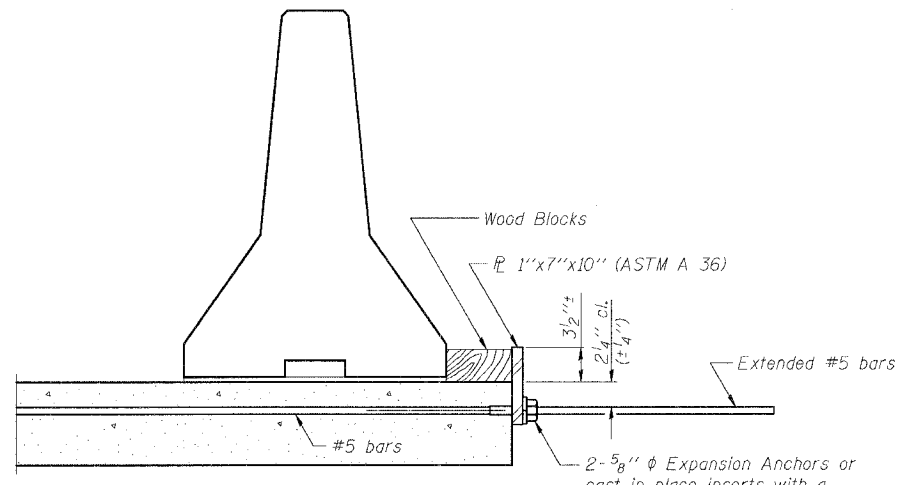
NOTES

- Detail I - With Bar Splicer or Couplers:
Connect one (1) 1"x7"x10" steel PL to the top layer of couplers with 2-5/8" φ bolts screwed to coupler at approximate C of each barrier panel.
- Detail II - With Extended Reinforcement Bars:
Connect one (1) 1"x7"x10" steel PL to the concrete slab with 2-5/8" φ Expansion Anchors or cast in place inserts spaced between the top layer of reinforcement at approximate C of each barrier panel.
- Cost of anchorage is included with Temporary Concrete Barrier.



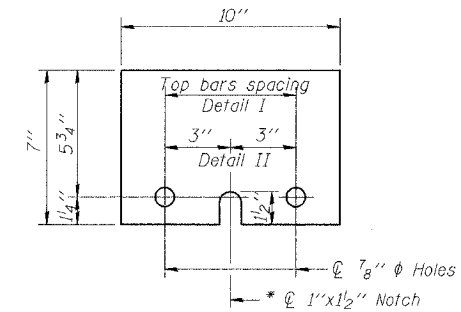
DETAIL I

The 1"x7"x10" Plate shall not be removed until Stage II Construction forms and reinforcement bars are in place.



DETAIL II

The 1"x7"x10" Plate shall not be removed until Stage II Construction forms and all reinforcement bars are in place and the concrete is ready to be placed.



1"x7"x10"

* Required only with Detail II

REVISIONS	
NAME	DATE

ILLINOIS DEPARTMENT OF TRANSPORTATION
TEMPORARY CONCRETE BARRIER
FOR STAGE CONSTRUCTION

F.A.U. ROUTE 567 (IL 38) OVER
SOUTH BRANCH OF THE KISHWAUKEE RIVER
DEKALB COUNTY - SEC. 34-XBR
STA. 140+96.71
S.N. 019-0044

SCALE: VERT.
HORIZ.
DATE: 7/6/05

DRAWN BY: LANDREY
DESIGNED BY: TRELLO
CHECKED BY: SANFORD

GREENE & BRADFORD, INC.
CONSULTING ENGINEERS
1275 N. WILSON AVENUE
SPRINGFIELD, ILLINOIS 62761-1000
PROFESSIONAL ENGINEERS LICENSE NO. 021-0000000
ILL. REG. NO. 021-0000000

COMPUTER FILE NO.
SN019-0044TCB
PROJECT 05198
12/4/06-MML

R-27

10-22-04