

STATE OF ILLINOIS
DEPARTMENT OF TRANSPORTATION

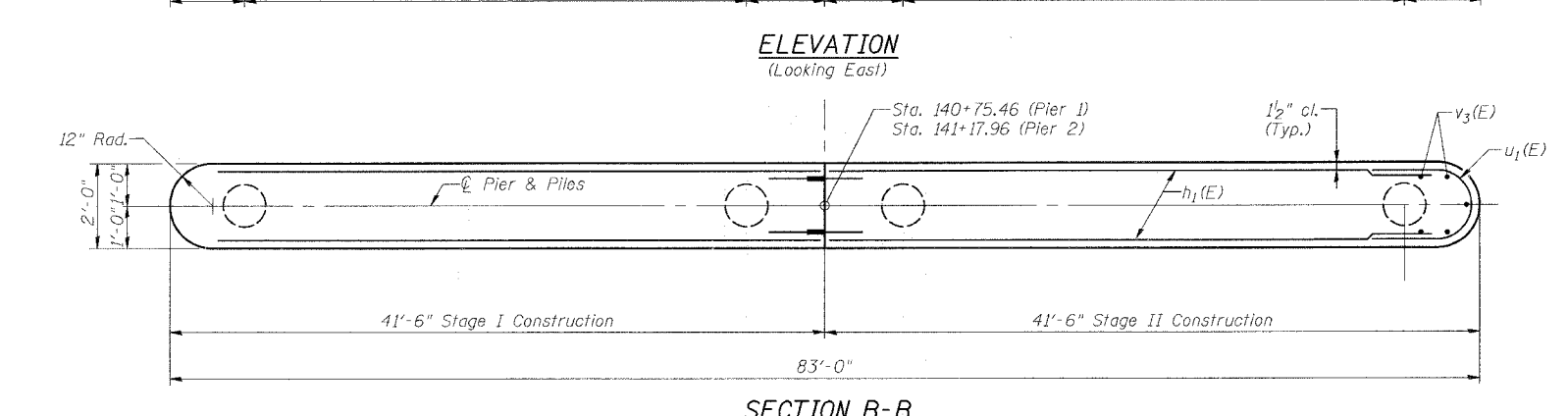
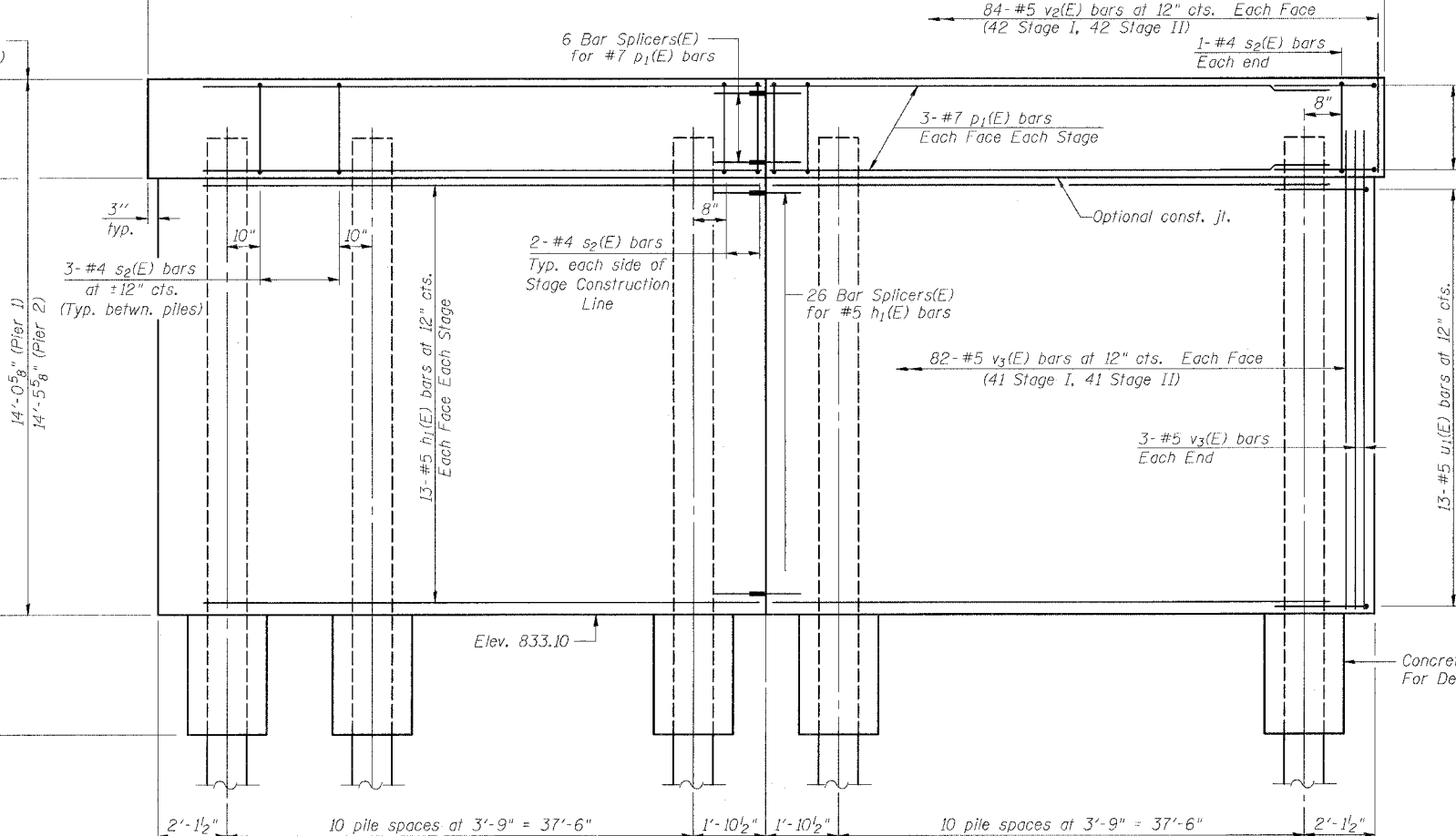
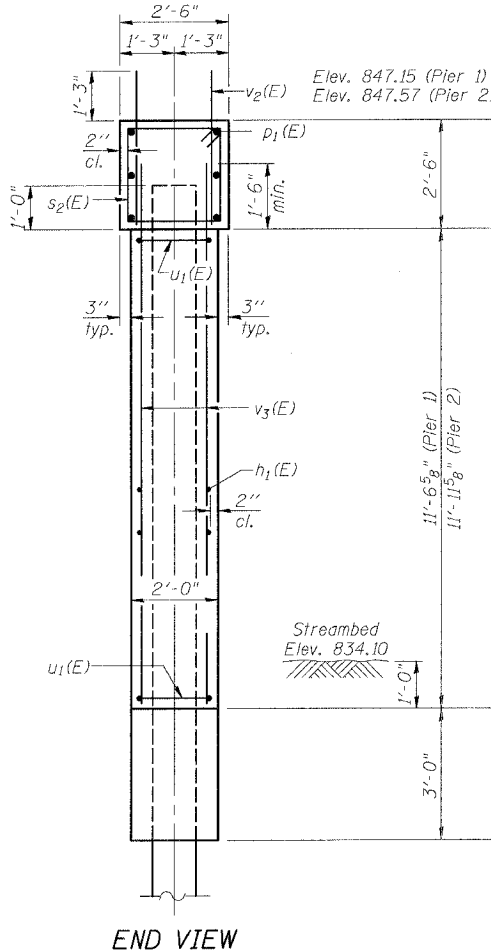
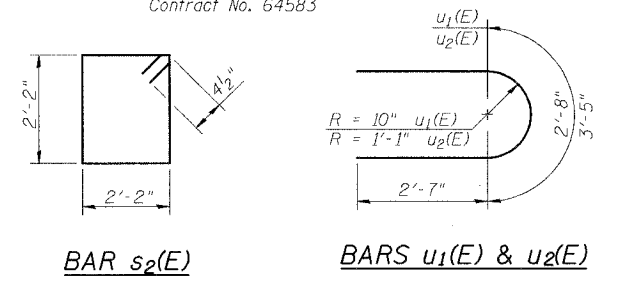
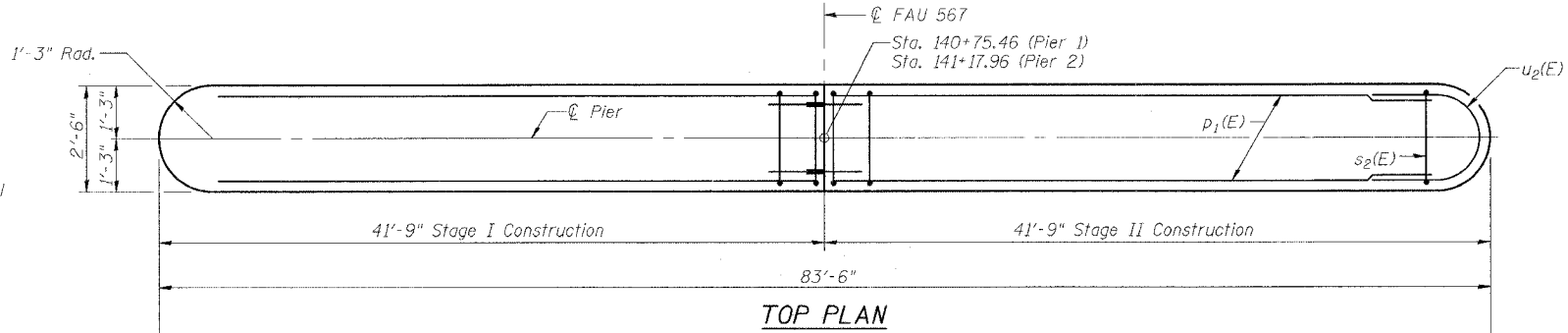
ROUTE NO. FAU 567 (IL 38)	SECTION 34-XBR	COUNTY DEKALB	SHEET NO. 90	SHEET NO. 41	SHEET NO. 10 14 SHEETS
FED. ROAD DIST. NO.		ILLINOIS	FED. AID PROJECT		

Contract No. 64583

PILE DATA

Type and Size: Metal Shell - 12 in. dia. x 0.179 in. walls
Nominal Required Bearing: 258 kips
Allowable Resistance Available: 86 kips
Estimated Length: 60 feet

Note:
The Metal Shell piles shall be according to ASTM A 252 Grade 3.
The test piles shall be driven to 110 percent of the Nominal Required Bearing indicated in the pile data information.



* For Concrete Encasement details, see sheet 12 of 14.

TWO PIERS
BILL OF MATERIAL

Bar	No.	Size	Length	Shape
h ₁ (E)	104	#5	40'-3"	—
p ₁ (E)	24	#7	40'-3"	—
s ₂ (E)	132	#4	9'-5"	□
u ₁ (E)	52	#5	7'-10"	U
u ₂ (E)	12	#6	8'-7"	U
v ₂ (E)	336	#5	3'-7"	—
v ₃ (E)	340	#5	13'-3"	—
Concrete Structures		Cu. Yd.	183.3	
Reinforcement Bars, Epoxy Coated		Pound	13,700	
Furnishing Metal Shell Piles, 12"		Foot	2580	
Structure Excavation		Cu. Yd.	20	
Driving Piles		Foot	2580	
Test Pile Metal Shells		Each	1	

Reinforcement Bars designated (E) shall be epoxy coated.

ILLINOIS DEPARTMENT OF TRANSPORTATION
PIERS

F.A.U. ROUTE 567 (IL 38) OVER SOUTH BRANCH OF THE KISHWAUKEE RIVER DEKALB COUNTY - SEC. 34-XBR STA. 140+96.71 S.N. 019-0044

SCALE: VERT. HORIZ. DATE: 7/6/05
DRAWN BY: LANDREY DESIGNED BY: TRELLO CHECKED BY: SANFORD

GREENE & BRADFORD, INC. OF SPRINGFIELD
REGISTERED PROFESSIONAL ENGINEERS
COMPUTER FILE NO. SN019-0044PIER
PROJECT 05198 12/4/06-MML

REVISIONS	NAME	DATE

FILE NAME = J:\05095\DRAWINGS\SN019-0044\SN019-0044.dgn
PLOT DATE = 12/4/2006
PLOT TIME = 1:57:41 PM
OPERATOR = mchelle

PC-1 10-22-04