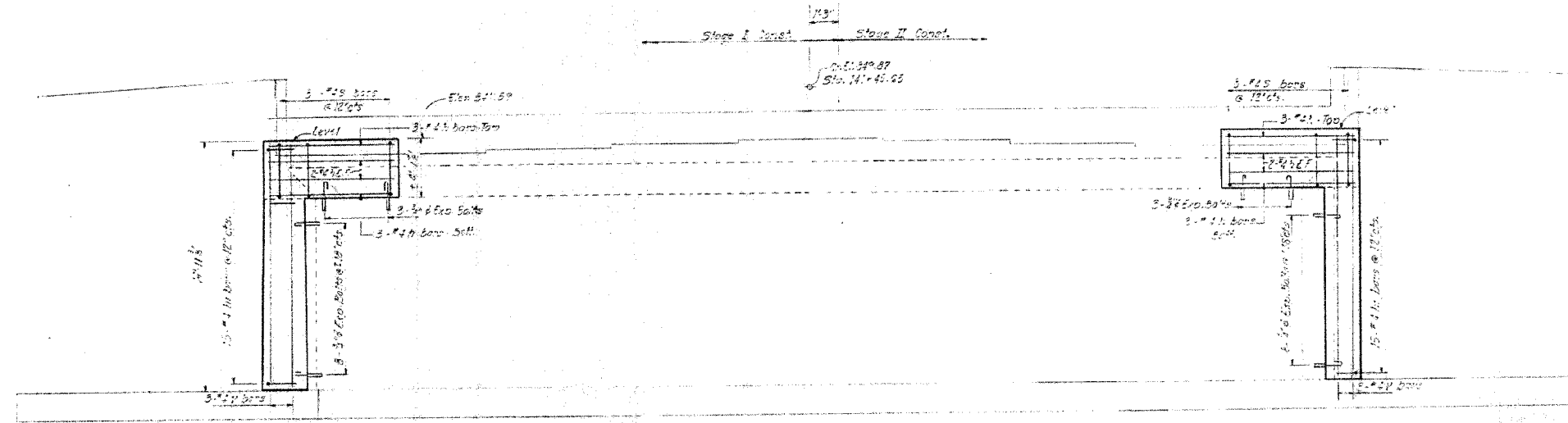


F.A.P. RTE.	SECTION	COUNTY	TOTAL SHEETS	SHEET NO.
567	34X-BR	DEKALB	90	54
STA.		TO STA.		
FED. ROAD DIST. NO.		ILLINOIS FED. AID PROJECT		

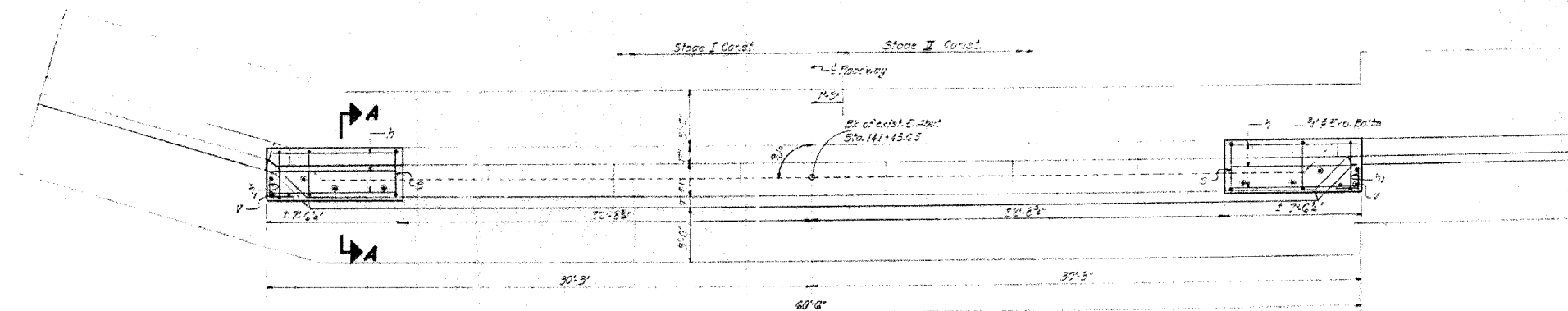
STATE OF ILLINOIS
DEPARTMENT OF TRANSPORTATION

DATE	BY	REVISION	NO.	DESCRIPTION
12/12/06	WAL	1	12	

SHEET NO. 5
9 SHEETS

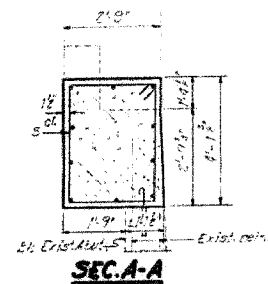
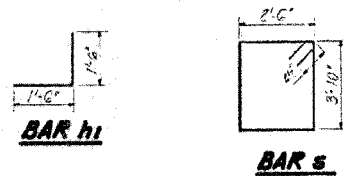


ELEVATION



PLAN
(Looking East)

Note:
Hatched areas indicate Concrete Removal.
All edges shall have standard chamfers unless otherwise noted.
Reinforcement extending into removed area shall be cleaned and incorporated into the new construction.
Expansion bolts shall be anchored in sound concrete.



BILL OF MATERIAL

Bar	No.	Size	Length	SA's
1	20	#4	17.5'	
4	30	#6	31.0'	
5	10	#4	13.5'	
7	6	#6	14.9'	
Concrete Removal				Cu' 5
Class X Concrete				Cu' 8.3
Reinforcement Bars				Wt 560
Expansion Bolts (#4)				Each 22

EAST ABUTMENT
F.A.P. 567 SEC. 34-X-BY
DEKALB COUNTY
STA. 141+02.40

DESIGNED	<i>J. J. [Signature]</i>	EXAMINED	<i>Mark [Signature]</i> 10/19
CHECKED	<i>L. Gaudin</i>	PASSED	
DRAWN	<i>S. G.</i>	APPROVED	
CHECKED	<i>L. G.</i>		

FOR INFORMATION ONLY

PLT DATE = 8/21/06
FILE NAME = 8/FILEL
PLT SCALE = 8/SCALE
REFERENCE = 8/REF
OPERATOR = 8/OPER

REVISIONS	
NAME	DATE

ILLINOIS DEPARTMENT OF TRANSPORTATION
EXISTING BRIDGE PLANS

FAP RTE 567 (IL RTE 38)
SECTION 34X-BR
DEKALB COUNTY

SCALE: VERT. DRAWN BY SUTHEARD
SCALE: HORIZ. CHECKED BY BOTT
DATE 2/24/06

<p>GREENE & BRADFORD, INC. OF SPRINGFIELD</p>	COMPUTER FILE NO. D10800EPLN
	PROJECT 05198 2/27/06-MDS

EXISTING BRIDGE PLANS