

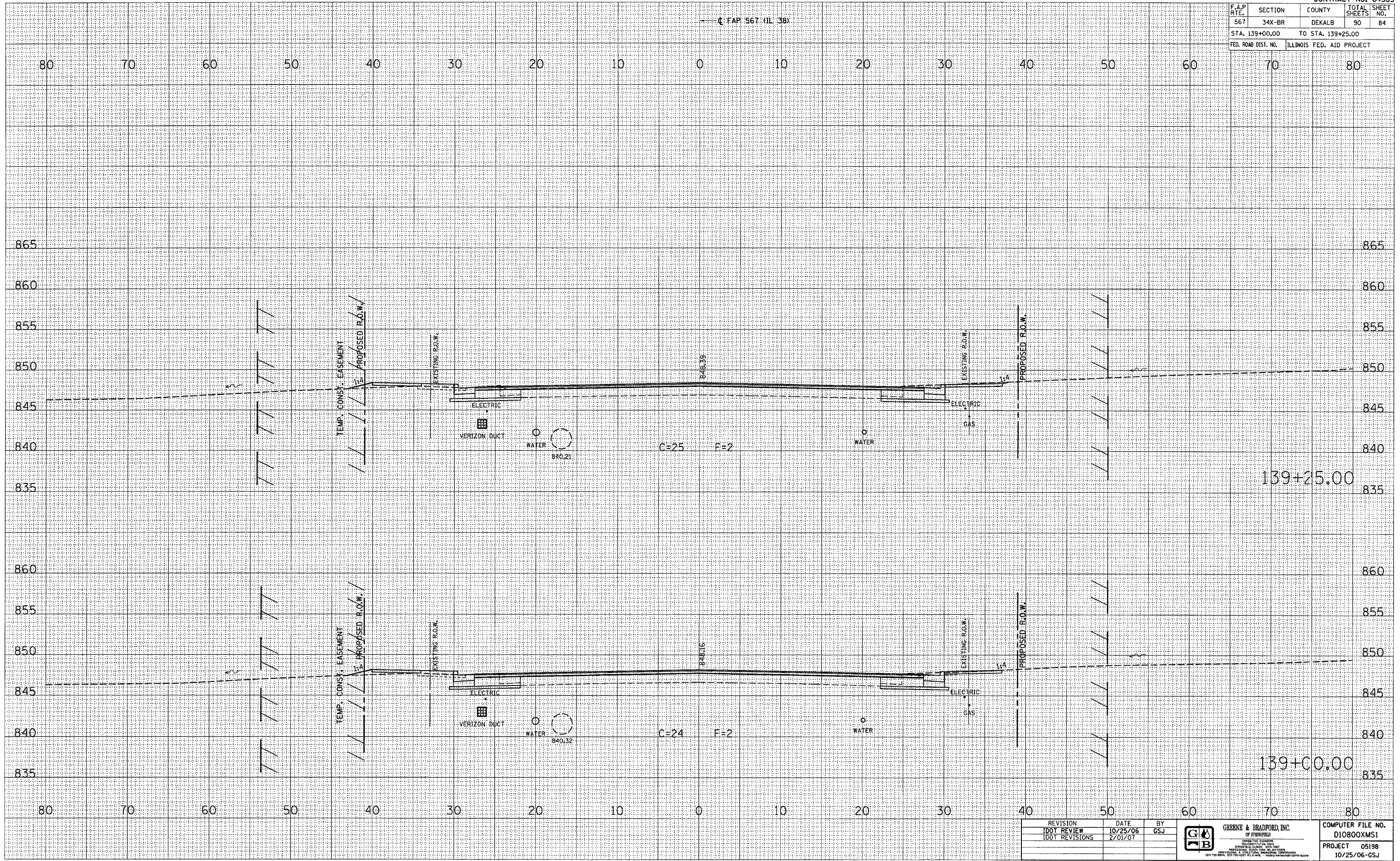
F.A.P. RTE.	SECTION	COUNTY	TOTAL SHEETS	SHEET NO.
567	34X-BR	DEKALB	90	84
STA. 139+00.00		TO STA. 139+25.00		
FED. ROAD DIST. NO.		ILLINOIS FED. AID PROJECT		

CL FAP 567 (IL 38)

DATE	
BY	
FINAL SURVEY	
SURVEY	
NOTE BOOK	
TEMP. CONST. EASEMENT	
AREAS CHECKED	
NO.	

DATE	
BY	
ORIGINAL SURVEY	
PLOTTED	
NOTE BOOK	
TEMP. CONST. EASEMENT	
AREAS CHECKED	
NO.	

PLOT DATE: 2/22/2007
 PLOT SCALE: 1"=40'
 REFERENCE: REF
 OPERATOR: USER



REVISION	DATE	BY	 GREEN & BRADFORD, INC. OF SPRINGFIELD CONSULTING ENGINEERS 1000 N. 10TH ST., SUITE 200 SPRINGFIELD, ILLINOIS 62761 PHONE: 217-223-1100 FAX: 217-223-1101 WWW.GREEN-AND-BRADFORD.COM	COMPUTER FILE NO.
IDOT REVIEW	10/25/06	GSJ		D10800XMS1
IDOT REVISIONS	2/01/07			PROJECT 05198 10/25/06-GSJ

CROSS SECTIONS -- MAINLINE