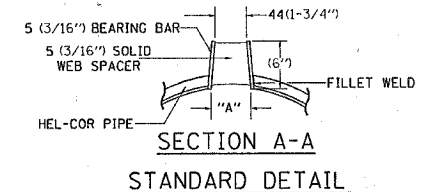
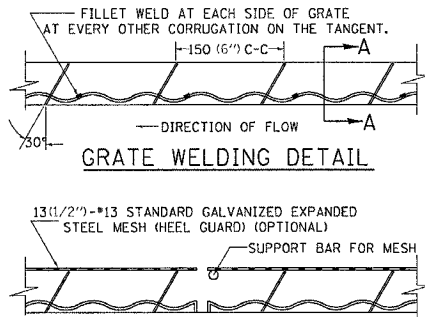
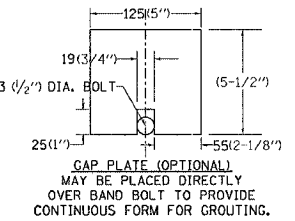
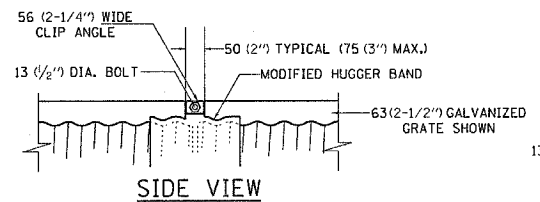
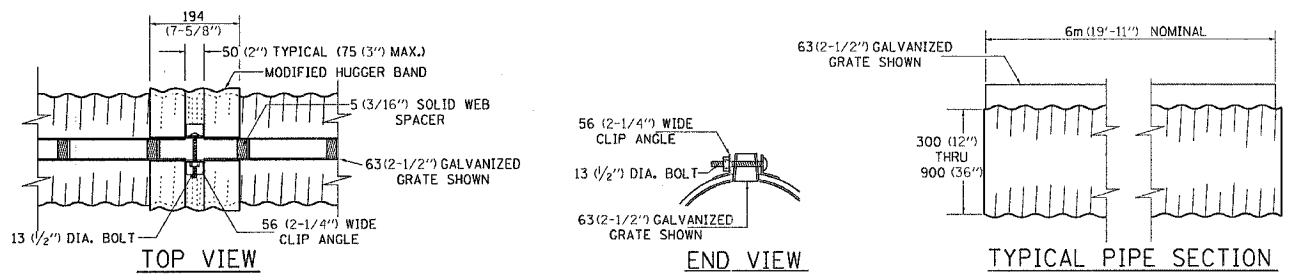


| F.A.I. RTE. | SECTION | COUNTY | TOTAL SHEETS | SHEET NO. |
|---------------------|-----------|---------------------------|--------------|-----------|
| 80 | (81-1M-3) | ROCK ISLAND | 25 | 16 |
| STA. | | TO STA. | | |
| FED. ROAD DIST. NO. | | ILLINOIS FED. AID PROJECT | | |

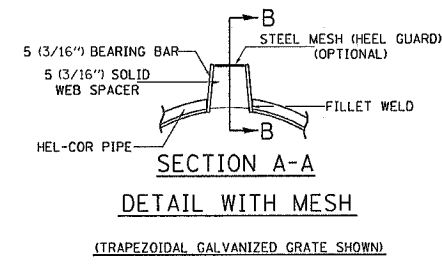
SLOTTED DRAIN PIPE



| GAGE OF PIPE | STANDARD SIZES | | | | | |
|--------------|----------------|-----------|-----------|-----------|-----------|-----------|
| | 300 (12") | 375 (15") | 450 (18") | 600 (24") | 750 (30") | 900 (36") |
| 16 | X | X | X | X | X | X |
| 14 | X | X | X | X | X | X |
| 12 | N.A. | N.A. | N.A. | N.A. | X | X |

| GRATE TYPE | "A" |
|-----------------|------------|
| VERT 63(2-1/2") | 44(1-3/4") |
| VERT 150 (6") | 44(1-3/4") |
| TRAP 63(2-1/2") | 56(2-1/4") |
| TRAP 150 (6") | 75 (3") |

- SLOTTED DRAIN NOTES**
- GRATING IS AVAILABLE IN DEPTHS OF 63(2-1/2") AND 150 (6").
 - VERTICAL GRATING (STRAIGHT SIDES) WITH VERTICAL SPACERS IS ALSO AVAILABLE.
 - FOR 150 (6") VERTICAL & TRAPEZOIDAL REQUIREMENTS, THE SLOTTED DRAIN BAND MAY BE FURNISHED WITH THE 100 (4") TECHCO BAND ANGLE.
 - DIMENSIONS ARE SUBJECT TO MANUFACTURING TOLERANCES.
 - REFERENCE CONTECH BAND MANUAL DWG. NO. 1008466 FOR BAND DETAILS.
- MANUFACTURING TOLERANCES**
- VERTICAL BOW ± 10 (3/8")
 - HORIZONTAL BOW ± 16 (5/8")
 - TWIST ± 13 (1/2")



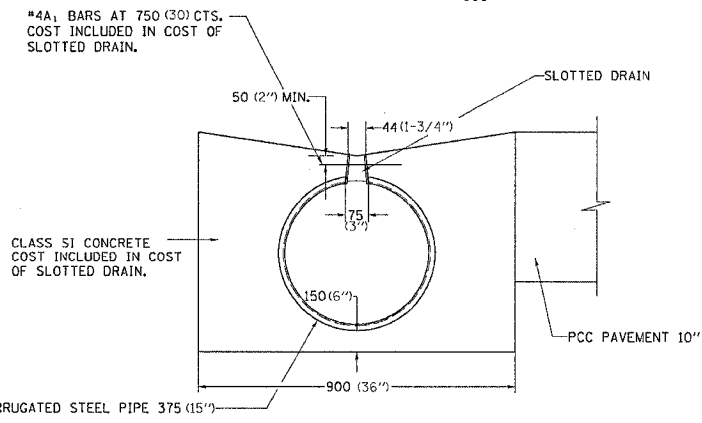
NOTES

CLASS SI CONCRETE SHALL BE USED THROUGHOUT.

THE SLOTTED DRAIN SHALL BE CORRUGATED PIPE CULVERT WITH INTEGRAL SLOTTED DRAINS. BEFORE PLACING THE CONCRETE ADJACENT TO THE PIPE, THE SLOT SHALL BE COVERED BY EITHER THIN, FLAT METAL SHEETING OR BY A BOARD NOTCHED TO FIT OVER THE GRATE BARS. THIS COVERING MUST FIT CLOSELY IN THE SLOT TO PREVENT ENTRY OF CONCRETE INTO THE PIPE. PAVING OVER THE SLOTTED DRAIN WILL THEN BE ONE CONTINUOUS OPERATION OVER THE PROTECTED DRAIN. THE PROTECTION FOR THE DRAIN SLOT SHALL THEN BE REMOVED. THE PIPE SHALL DRAIN INTO THE SIDE OF THE INLET. THE OPENING WHERE THE SLOT IS REMOVED SHALL BE COVERED TO PREVENT CONCRETE FROM ENTERING THE PIPE.

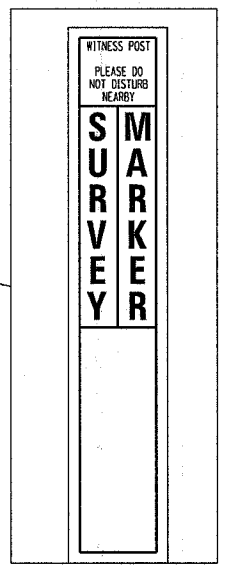
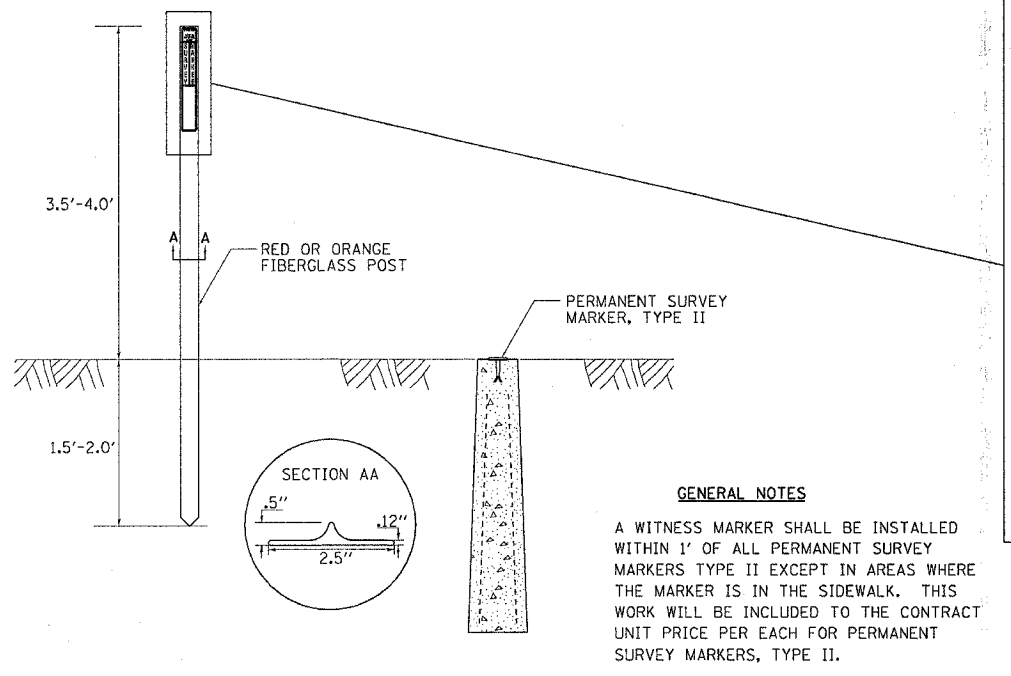
THE CORRUGATED STEEL PIPE USED IN THE SLOTTED DRAIN SHALL MEET THE REQUIREMENTS OF AASHTO M-36/ASTM A 760. THE CMP SHALL BE GALVANIZED OR ALUMINIZED STEEL TYPE 2. STEEL GRATING SHALL MEET THE GALVANIZING REQUIREMENTS OF AASHTO M-111. THIS WORK WILL BE PAID FOR AT THE CONTRACT UNIT PRICE PER FOOT FOR SLOTTED DRAIN PIPE, AND SHALL INCLUDE ELBOWS, DRILLING HOLES IN GRATING, SUPPLYING AND PLACING A1 BARS AND CONCRETE.

USE APPROVED END CAP TO PREVENT CONCRETE ENTRY INTO THE PIPE DURING GUTTER CONSTRUCTION ON THE UPSTREAM END OF PIPE.



ALL DIMENSIONS ARE IN MILLIMETERS (INCHES) UNLESS OTHERWISE NOTED.

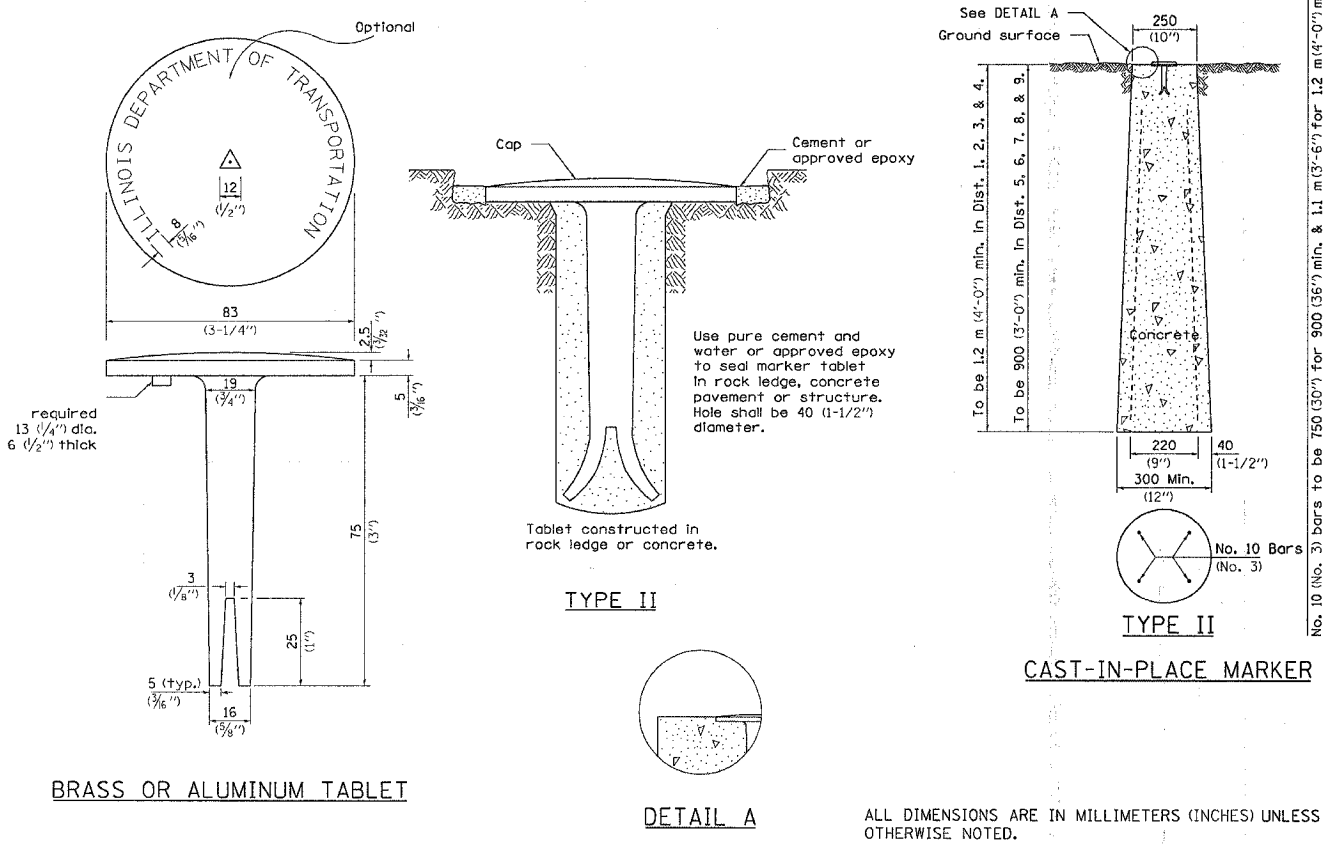
WITNESS MARKER FOR PERMANENT SURVEY MARKERS, TYPE II



GENERAL NOTES

A WITNESS MARKER SHALL BE INSTALLED WITHIN 1' OF ALL PERMANENT SURVEY MARKERS TYPE II EXCEPT IN AREAS WHERE THE MARKER IS IN THE SIDEWALK. THIS WORK WILL BE INCLUDED TO THE CONTRACT UNIT PRICE PER EACH FOR PERMANENT SURVEY MARKERS, TYPE II.

PERMANENT SURVEY MARKERS, TYPE II



BRASS OR ALUMINUM TABLET

DETAIL A

CAST-IN-PLACE MARKER

ALL DIMENSIONS ARE IN MILLIMETERS (INCHES) UNLESS OTHERWISE NOTED.

PLOT DATE = Thu Dec 14 07:48:47 2006
 FILE NAME = c:\p\proj\sta\2268593\4863593.plt
 SCALE = 384000 / IN.
 REFERENCE = 486359