

F.A.P. RTE.	SECTION	COUNTY	TOTAL SHEETS	SHEET NO.
301	21T-1	STEPHENSON	64	1

1/65

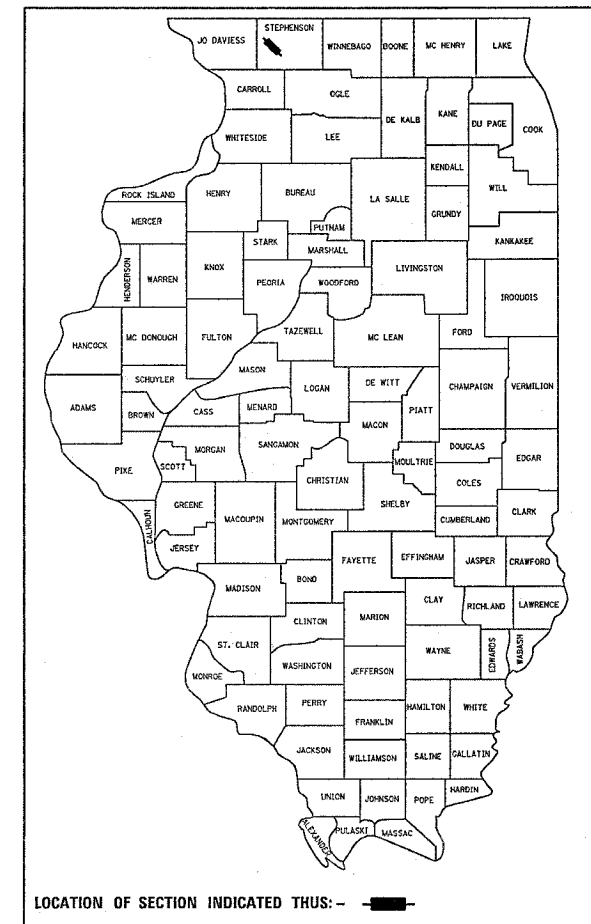
STATE OF ILLINOIS
DEPARTMENT OF TRANSPORTATION
DIVISION OF HIGHWAYS

**PROPOSED
HIGHWAY PLANS**

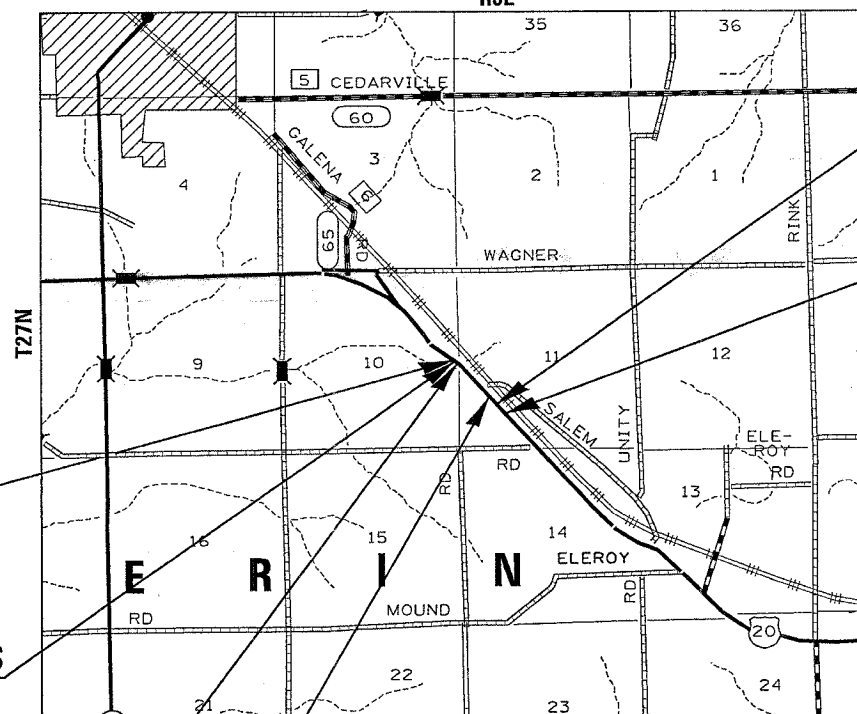
FAP ROUTE 301 (US 20)
SECTION 21T-1
PROJECT No NHF-0301(040)
STEPHENSON COUNTY
CULVERT REPLACEMENT & BITUMINOUS SHOULDERS

FOR INDEX OF SHEETS & STANDARDS, SEE SHEET NO. 2

D-92-111-05



C-92-113-06
R6E



SECTION ENDS
STA 389+00

IMPROVEMENT ENDS
STA 389+50

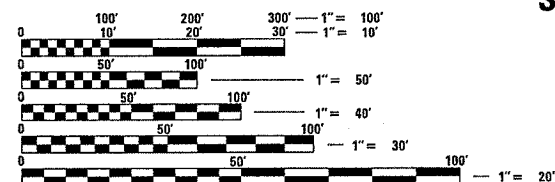
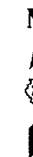
IMPROVEMENT BEGINS
STA 370+50

SECTION BEGINS
STA 373+50

CULVERT
STA 374+84.61

CULVERT
STA 385+50

GROSS LENGTH OF PROJECT = 1550 LIN. FT. = 0.29 MI.
NET LENGTH = 1550 LIN. FT. = 0.29 MI.



FULL SIZE PLANS HAVE BEEN PREPARED USING STANDARD ENGINEERING SCALES. REDUCED SIZED PLANS WILL NOT CONFORM TO STANDARD SCALES. IN MAKING MEASUREMENTS ON REDUCED PLANS, THE ABOVE SCALES MAY BE USED.

J.U.L.I.E.
JOINT UTILITY LOCATION INFORMATION FOR EXCAVATION
1-800-892-0123

ERIN TOWNSHIP, SECTION 10,11
CONTRACT NO. 64B48

STEPHENSON COUNTY SECTION 21T-1 FAP ROUTE 301

SQUAD LEADER: TRACI HELFICH (815) 284-5932

STATE OF ILLINOIS
DEPARTMENT OF TRANSPORTATION
DIVISION OF HIGHWAYS

SUBMITTED December 15, 2006

Joseph E. Crown
DEPUTY DIRECTOR OF HIGHWAYS, REGION ENGINEER

February 2, 2007
Eric E. Harrel
INTERIM ENGINEER OF DESIGN AND ENVIRONMENT

February 20, 2007
Milton R. Sees, P.E.
DIRECTOR OF HIGHWAYS, CHIEF ENGINEER

PRINTED BY THE AUTHORITY
OF THE STATE OF ILLINOIS

REGION 2 DISTRICT 2
DIXON