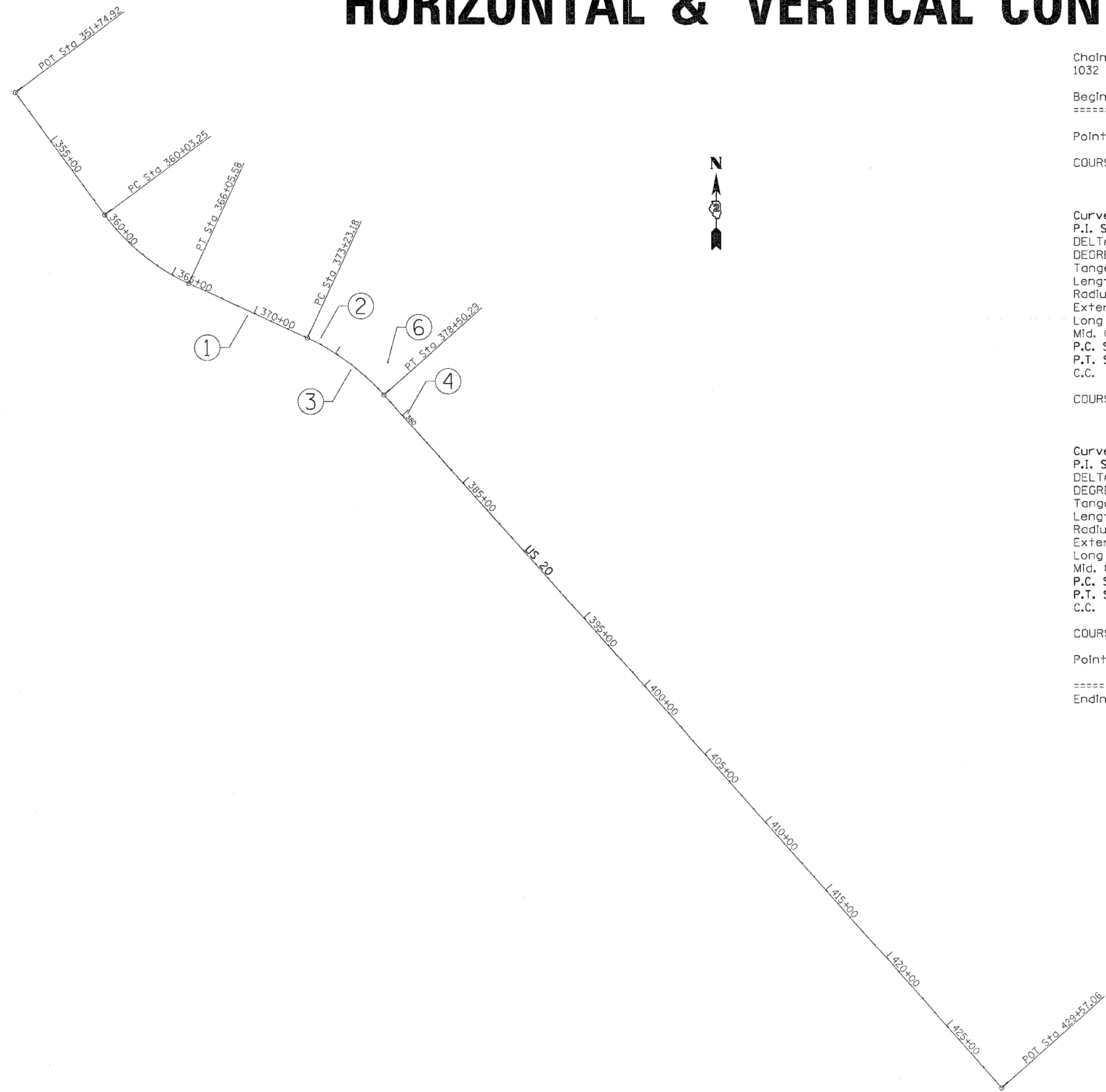


F.A.P. RTE.	SECTION	COUNTY	TOTAL SHEETS	SHEET NO.
301	21T-1	STEPHENSON	64	13
STA.		TO STA.		
FED. ROAD DIST. NO.		ILLINOIS	FED. AID PROJECT	

HORIZONTAL & VERTICAL CONTROL



Chain US20 contains:
1032 CUR 200 CUR 210 1044

Beginning chain US20 description

Point 1032 N 2,071,547.76 E 2,397,191.62 Sta 351+74.92

COURSE FROM 1032 TO PC 200 143° 35' 35.8647" DIST 828.33'

Curve Data

Curve 200
 P.I. Station 363+10.92 N 2,070,633.48 E 2,397,865.85
 DELTA = 28° 47' 40.9867" (LT)
 DEGREE = 4° 46' 50.1246"
 Tangent = 307.67'
 Length = 602.33'
 Radius = 1,198.51'
 External = 38.86'
 Long Chord = 596.01'
 Mid. Ord. = 37.64'
 P.C. Station 360+03.25 N 2,070,881.10 E 2,397,683.24
 P.T. Station 366+05.58 N 2,070,504.44 E 2,398,145.14
 C.C. N 2,071,592.43 E 2,398,647.83

COURSE FROM PT 200 TO PC 210 114° 47' 54.8780" DIST 717.60'

Curve Data

Curve 210
 P.I. Station 375+90.52 N 2,070,091.32 E 2,399,039.26
 DELTA = 23° 35' 12.3763" (RT)
 DEGREE = 4° 28' 28.9268"
 Tangent = 267.34'
 Length = 527.11'
 Radius = 1,280.44'
 External = 27.61'
 Long Chord = 523.40'
 Mid. Ord. = 27.03'
 P.C. Station 373+23.18 N 2,070,203.46 E 2,398,796.57
 P.T. Station 378+50.29 N 2,069,891.45 E 2,399,216.80
 C.C. N 2,069,041.09 E 2,398,259.51

COURSE FROM PT 210 TO 1044 138° 23' 07.2543" DIST 5,106.77'

Point 1044 N 2,066,073.48 E 2,402,608.30 Sta 429+57.06

Ending chain US20 description

CURVE	PI	CC	PC	PT
200	200	201	202	203
210	210	211	212	213

PLOT DATE = Mon Dec 11 09:11:09 2006
 PLOT SCALE = 3/8"=1'-0"
 USER NAME = rebecca.j