

| F.A.P. RTE.               | SECTION | COUNTY                    | TOTAL SHEETS | SHEET NO. |
|---------------------------|---------|---------------------------|--------------|-----------|
| *754                      | 101M&TS | BOONE                     | 95           | 22        |
| STA. _____                |         | TO STA. _____             |              |           |
| FED. ROAD DIST. NO. _____ |         | ILLINOIS FED. AID PROJECT |              |           |

# HORIZONTAL & VERTICAL CONTROL

Chain 76 contains:  
20 CUR 200 CUR 210 CUR 220 35

Beginning chain 76 description

Point 20 N 2,047,517.2920 E 2,652,405.2200 Sta 14+30.0281

Course from 20 to PC 200 350° 30' 20.4906" Dist 5,394.4209'

Curve Data

Curve 200

P.I. Station 73+10.9381 N 2,053,317.6452 E 2,651,435.1661  
 Delta = 6° 53' 49.8501" (RT)  
 Degree = 0° 42' 35.0292"  
 Tangent = 486.4891'  
 Length = 971.8030'  
 Radius = 8,072.8944'  
 External = 14.6451'  
 Long Chord = 971.2163'  
 Mid. Ord. = 14.6186'  
 P.C. Station 68+24.4490 N 2,052,837.8200 E 2,651,515.4123  
 P.T. Station 77+96.2520 N 2,053,803.6346 E 2,651,413.1219  
 C.C. N 2,054,169.4410 E 2,659,477.7241

Course from PT 200 to PC 210 357° 24' 10.3406" Dist 1,531.4823'

Curve Data

Curve 210

P.I. Station 99+25.2061 N 2,055,930.4021 E 2,651,316.6528  
 Delta = 51° 58' 56.4009" (RT)  
 Degree = 4° 40' 31.3708"  
 Tangent = 597.4719'  
 Length = 1,111.8310'  
 Radius = 1,225.4784'  
 External = 137.8887'  
 Long Chord = 1,074.0891'  
 Mid. Ord. = 123.9429'  
 P.C. Station 93+27.7343 N 2,055,333.5439 E 2,651,343.7259  
 P.T. Station 104+39.5653 N 2,056,319.3385 E 2,651,770.1956  
 C.C. N 2,055,389.0739 E 2,652,567.9455

Course from PT 210 to PC 220 49° 23' 06.7415" Dist 1,680.0301'

Curve Data

Curve 220

P.I. Station 129+26.5282 N 2,057,938.2773 E 2,653,658.0572  
 Delta = 50° 10' 31.2850" (LT)  
 Degree = 3° 19' 27.2184"  
 Tangent = 806.9328'  
 Length = 1,509.3840'  
 Radius = 1,723.5819'  
 External = 179.5406'  
 Long Chord = 1,461.6135'  
 Mid. Ord. = 162.6027'  
 P.C. Station 121+19.5954 N 2,057,412.9881 E 2,653,045.5119  
 P.T. Station 136+28.9794 N 2,058,745.1334 E 2,653,646.9294  
 C.C. N 2,058,721.3647 E 2,651,923.5114

Course from PT 220 to 35 359° 12' 35.4565" Dist 5,543.9532'

Point 35 N 2,064,288.5594 E 2,653,570.4766 Sta 191+72.9326

Ending chain 76 description

Chain SQUAW-E contains:  
42 34

Beginning chain SQUAW-E description

Point 42 N 2,051,377.4887 E 2,651,759.6388 Sta 239+01.1978

Course from 42 to 34 88° 36' 27.2884" Dist 1,860.4706'

Point 34 N 2,051,422.6980 E 2,653,619.5600 Sta 257+61.6684

Ending chain SQUAW-E description

Chain SQUAW-W contains:  
40 41

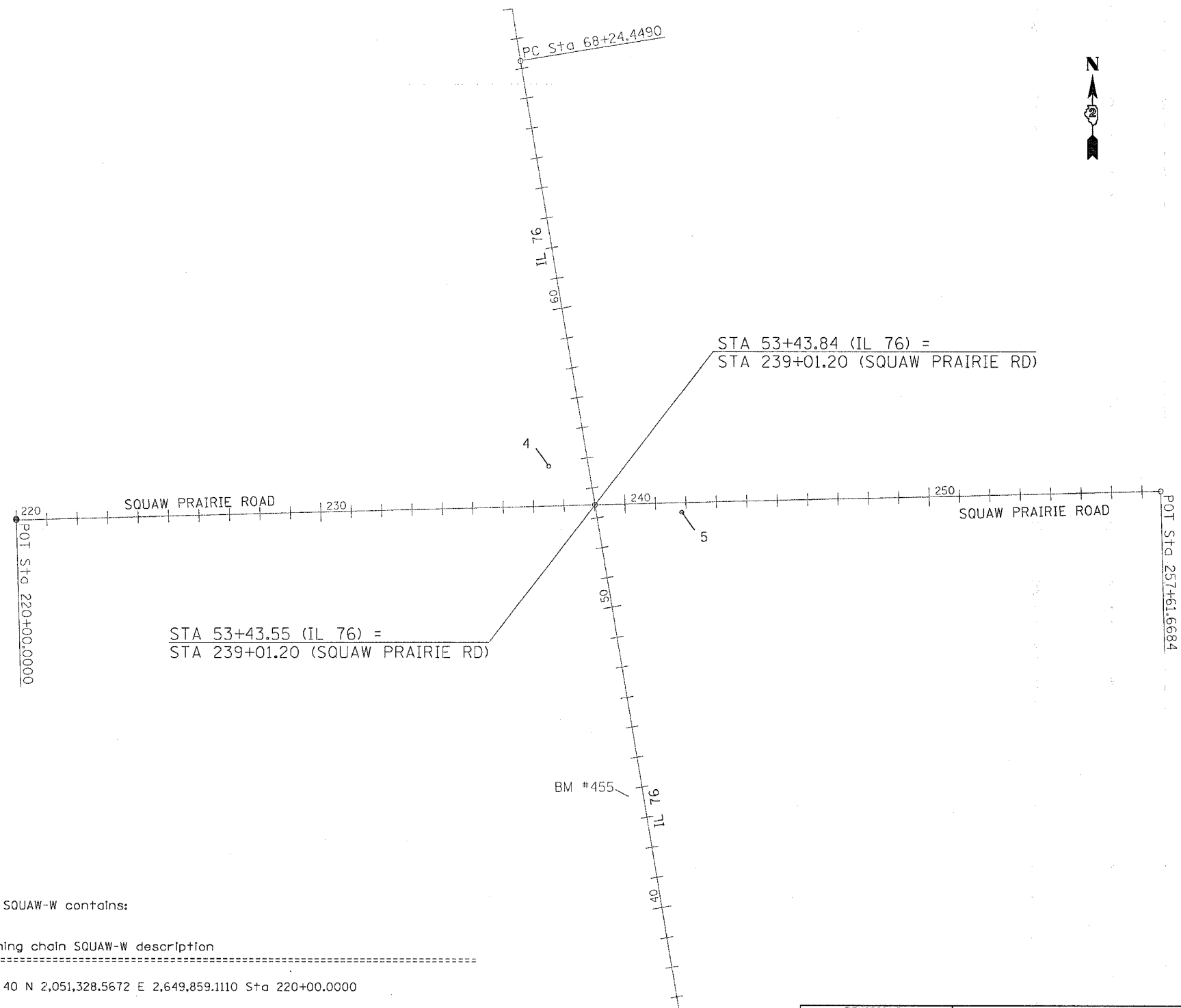
Beginning chain SQUAW-W description

Point 40 N 2,051,328.5672 E 2,649,859.1110 Sta 220+00.0000

Course from 40 to 41 88° 32' 02.8567" Dist 1,901.1978'

Point 41 N 2,051,377.2027 E 2,651,759.6866 Sta 239+01.1978

Ending chain SQUAW-W description



PLOT DATE = Fri, Dec 08 11:26:04 2006  
 FILE NAME = c:\pwork\112606\112606\112606.dgn  
 PLOT SCALE = 200.0000 / IN.  
 USER NAME = polzinej

| REVISIONS |      |
|-----------|------|
| NAME      | DATE |
|           |      |
|           |      |
|           |      |
|           |      |
|           |      |
|           |      |
|           |      |
|           |      |
|           |      |
|           |      |

ILLINOIS DEPARTMENT OF TRANSPORTATION  
**FAP ROUTE 754 (IL 76)**  
**SECTION 101M&TS**  
**BOONE COUNTY**

SCALE: VERT. \_\_\_\_\_  
 DATE: \_\_\_\_\_

DRAWN BY \_\_\_\_\_  
 CHECKED BY \_\_\_\_\_