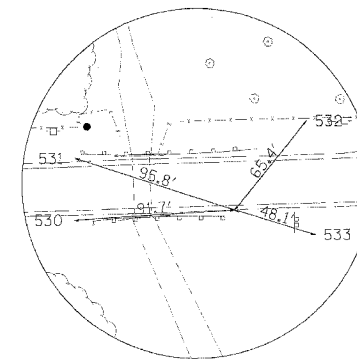


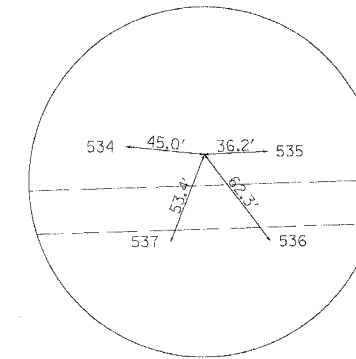
F.A.P. RTE.	SECTION	COUNTY	TOTAL SHEET SHEETS NO.
545	114T-1	*	118 12
STA.	TO STA.		
FED. ROAD DIST. NO.	ILLINOIS	FED. AID PROJECT	
* CARROLL & OGLE			

REFERENCE TIES

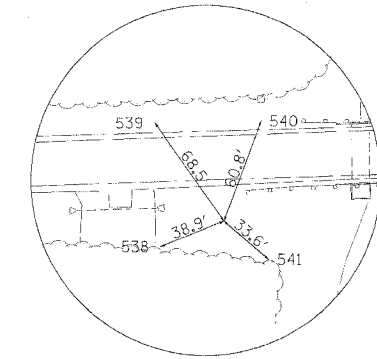
POINT	NORTH	EAST	ELEVATION	CHAIN	STATION	OFFSET	DESCRIPTION
530	1999189.9380	2413929.7510	893.8223	IL 72	243+97.54	17.8891 RT	IRON PIN W/CAP
531	1999225.4530	2413930.2010	893.4395	IL 72	243+99.00	17.5984 LT	IRON PIN W/CAP
532	1999246.3400	2414062.4740	893.1711	IL 72	245+31.81	34.7307 LT	IRON PIN W/CAP
533	1999181.5320	2414067.2860	892.5348	IL 72	245+34.79	30.1872 RT	IRON PIN W/CAP
534	1999263.1250	2414614.8780	912.9250	IL 72	250+84.46	35.9947 LT	IRON PIN W/CAP
535	1999260.1290	2414695.8280	914.8715	IL 72	251+65.29	30.7367 LT	IRON PIN W/CAP
536	1999208.8760	2414697.3660	914.2085	IL 72	251+65.40	20.5386 RT	IRON PIN W/CAP
537	1999208.6700	2414640.3210	912.7672	IL 72	251+08.37	19.1507 RT	IRON PIN W/CAP
538	1999356.5030	2420794.2730	912.5930	IL 72	312+63.90	49.4823 RT	IRON PIN W/CAP
539	1999427.0210	2420791.1010	913.7303	IL 72	312+62.92	21.1003 LT	IRON PIN W/CAP
540	1999427.8690	2420851.8150	913.1640	IL 72	313+23.63	20.0553 LT	IRON PIN W/CAP
541	1999349.0320	2420855.9280	911.7761	IL 72	313+25.29	58.8720 RT	IRON PIN W/CAP
542	1999396.4870	2421825.1750	912.4423	IL 72	322+95.54	41.6587 RT	IRON PIN W/CAP
543	1999468.2190	2421797.4470	913.6739	IL 72	322+70.07	30.9025 LT	IRON PIN W/CAP
544	1999469.7840	2421872.1510	914.4711	IL 72	323+44.78	30.1381 LT	IRON PIN W/CAP
545	1999398.2790	2421874.0380	913.3860	IL 72	323+44.44	41.3913 RT	IRON PIN W/CAP
546	1999799.1100	2436722.6500	902.6671	IL 72	101+88.16	30.3676 RT	IRON PIN W/CAP
547	1999862.1590	2436732.9440	901.4961	IL 72	101+99.73	32.4585 LT	IRON PIN W/CAP
548	1999862.9010	2436807.1600	901.0803	IL 72	102+73.95	31.6918 LT	IRON PIN W/CAP
549	1999796.8270	2436804.5150	901.2736	IL 72	102+69.96	34.3148 RT	IRON PIN W/CAP
550	1999848.4000	2438568.9300	904.3858	IL 72	120+35.06	18.6309 RT	IRON PIN W/CAP
551	1999899.3970	2438567.4280	902.6338	IL 72	120+34.60	32.3854 LT	IRON PIN W/CAP
552	1999892.9750	2438638.1320	904.6590	IL 72	121+05.16	24.5272 LT	IRON PIN W/CAP
553	1999848.6700	2438632.9310	904.2066	IL 72	120+99.05	19.6630 RT	IRON PIN W/CAP
554	1999857.6560	2439912.0070	917.6568	IL 72	133+78.05	36.6884 RT	IRON PIN W/CAP
555	1999939.7470	2439944.5870	918.2564	IL 72	134+12.29	44.7237 LT	IRON PIN W/CAP
556	1999863.5960	2439977.4930	918.6190	IL 72	134+43.64	32.0811 RT	IRON PIN W/CAP
557	1999839.9950	2439949.9010	918.8849	IL 72	134+15.58	55.1154 RT	IRON PIN W/CAP
558	1999887.9090	2441165.6040	917.1095	IL 72	146+32.00	31.9322 RT	IRON PIN W/CAP
559	1999950.3750	2441164.5220	917.6773	IL 72	146+32.19	30.5430 LT	IRON PIN W/CAP
560	1999948.0200	2441225.2300	920.0126	IL 72	146+92.84	26.9540 LT	IRON PIN W/CAP
561	1999894.9470	2441235.2520	919.5607	IL 72	147+01.78	26.3122 RT	IRON PIN W/CAP
566	1999697.8230	2431598.6910	958.5739	IL 72	50+62.99	20.4965 RT	IRON PIN W/CAP
567	1999752.4010	2431596.5910	960.3937	IL 72	50+62.50	34.1191 LT	IRON PIN W/CAP
568	1999754.0910	2431646.8690	961.0419	IL 72	51+12.81	34.3210 LT	IRON PIN W/CAP
569	1999699.5060	2431648.5960	958.9847	IL 72	51+12.92	20.2920 RT	IRON PIN W/CAP



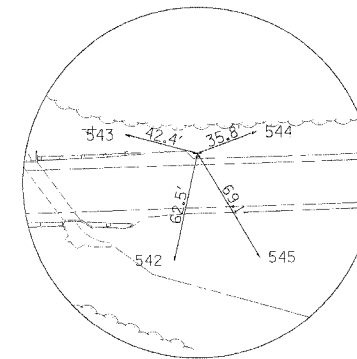
HORIZONTAL CONTROL POINT No. 1



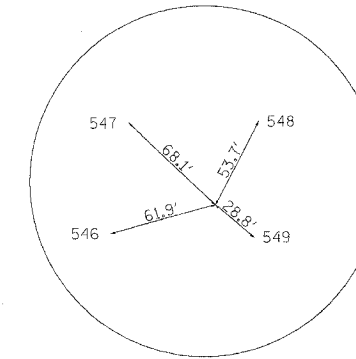
HORIZONTAL CONTROL POINT No. 2



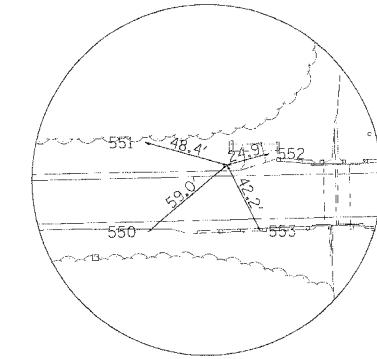
HORIZONTAL CONTROL POINT No. 3



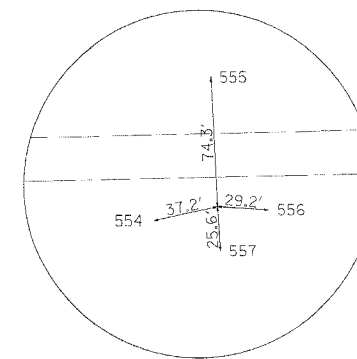
HORIZONTAL CONTROL POINT No. 4



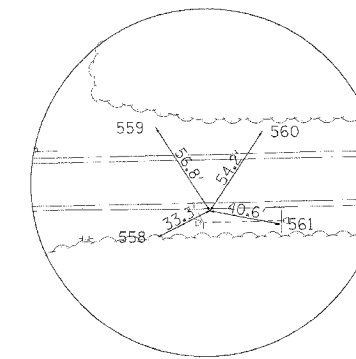
HORIZONTAL CONTROL POINT No. 5



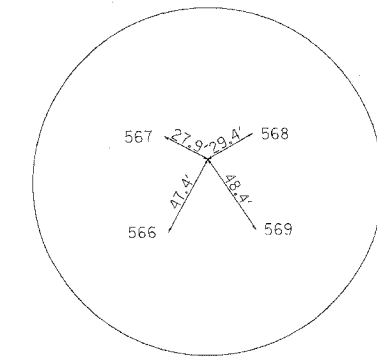
HORIZONTAL CONTROL POINT No. 6



HORIZONTAL CONTROL POINT No. 7



HORIZONTAL CONTROL POINT No. 8



HORIZONTAL CONTROL POINT No. 9

HORIZONTAL CONTROL POINTS

POINT	NORTH	EAST	ELEVATION	CHAIN	STATION	OFFSET	DESCRIPTION
1	1999195.5130	2414021.1770	894.7152	IL 72	244+89.09	14.9076 RT	TRAVERSE STATION
2	1999258.5000	2414659.6440	913.7720	IL 72	251+29.08	30.1200 LT	TRAVERSE STATION
3	1999370.8510	2420830.3870	911.9168	IL 72	313+00.44	36.2671 RT	TRAVERSE STATION
4	1999457.5570	2421838.5120	914.7505	IL 72	323+10.78	18.9658 LT	TRAVERSE STATION
5	1999815.2700	2436782.3490	905.1659	IL 72	102+48.18	15.4251 RT	TRAVERSE STATION
6	1999886.4520	2438614.0140	904.6133	IL 72	120+80.91	18.4962 LT	TRAVERSE STATION
7	1999865.5370	2439948.3200	918.6595	IL 72	134+14.51	29.5469 RT	TRAVERSE STATION
8	1999902.7010	2441195.4020	919.5732	IL 72	146+62.09	17.7494 RT	TRAVERSE STATION
9	1999739.5068	2431621.3081	958.6429	IL 72	50+86.83	20.4993 LT	TRAVERSE STATION

PLOT DATE = #DATE#
 FILE NAME = #FILE#
 PLOT SCALE = #SCALE#
 USER NAME = #USER#