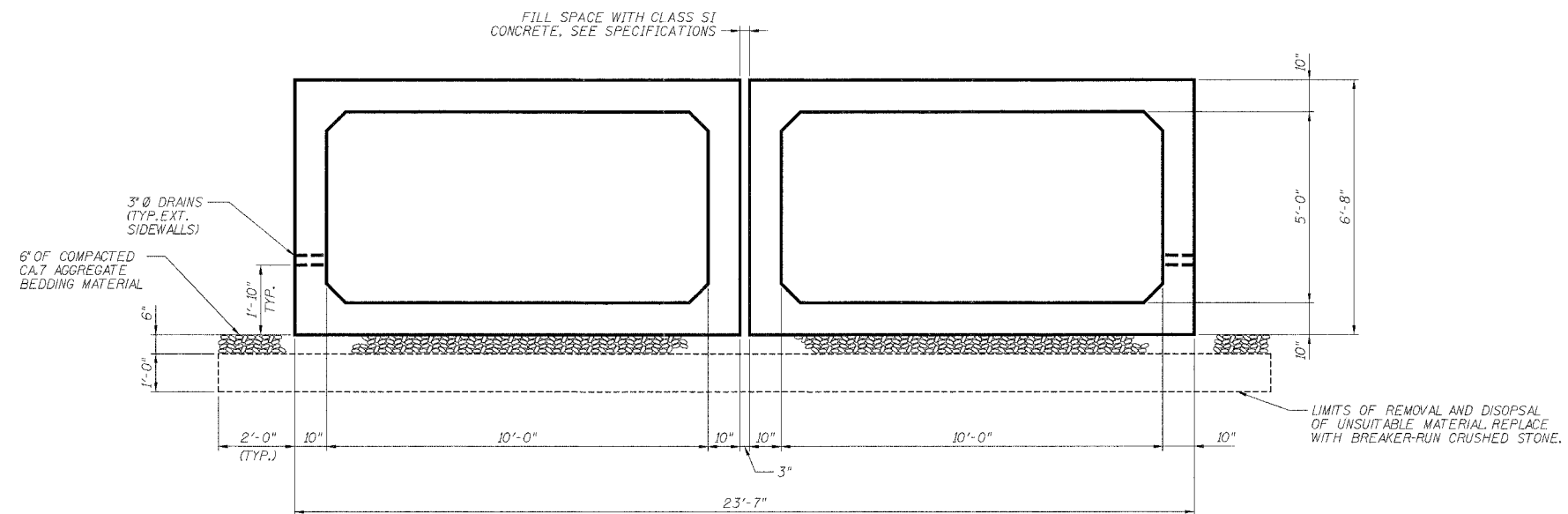


STATE OF ILLINOIS  
DEPARTMENT OF TRANSPORTATION

| ROUTE NO.           | SECTION | COUNTY           | TOTAL SHEETS | SHEET NO. |
|---------------------|---------|------------------|--------------|-----------|
| F.A.P.<br>545       | 114T-1  | CARROLL          | 118          | 27        |
| FED. ROAD DIST. NO. | BILLING | FED. AID PROJECT |              |           |

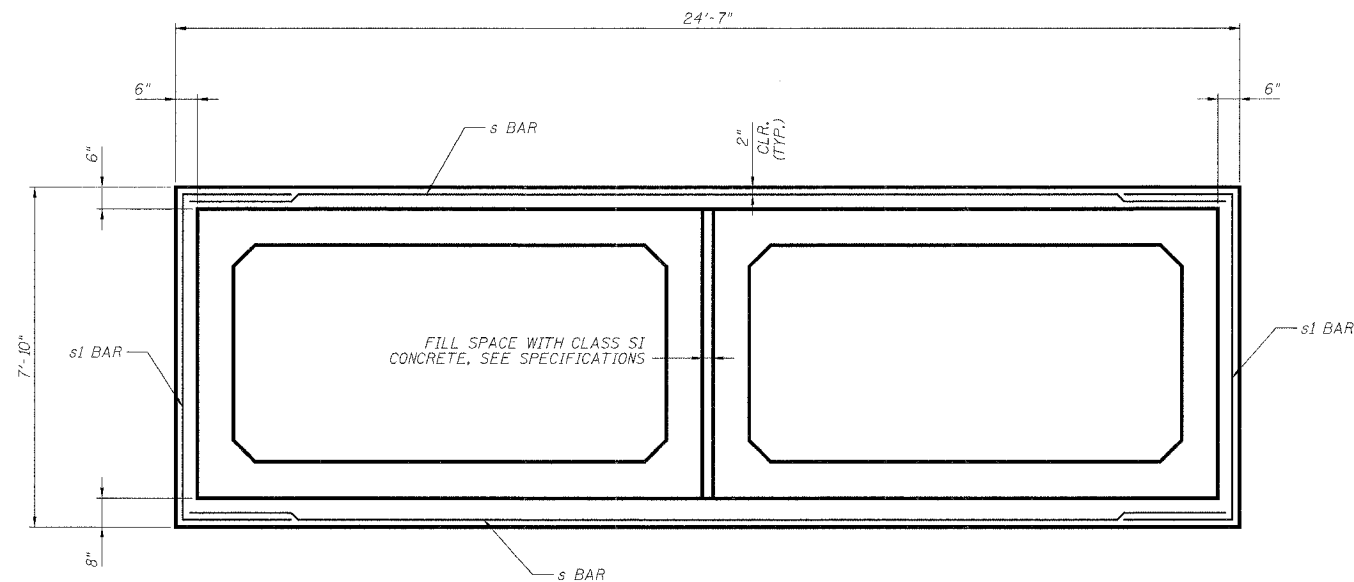
SHEET NO. 02  
07 SHEETS

Contract # 64C31



NOTE:  
CLASS SI CONCRETE TO BE  
POURED BETWEEN PRECAST  
SECTIONS PRIOR TO FORMING  
AND POURING CAST-IN-PLACE  
APRONS.

PRECAST TYPICAL SECTION



PRECAST TO CAST-IN-PLACE CONNECTION COLLAR  
SECTION A-A

|            |     |
|------------|-----|
| DESIGNED - | ASP |
| CHECKED -  | WSP |
| DRAWN -    | BGC |
| CHECKED -  | ASP |

|                                    |          |
|------------------------------------|----------|
| 200                                | EXAMINED |
| ENGINEER OF BRIDGE DESIGN          |          |
| PASSED                             |          |
| ENGINEER OF BRIDGES AND STRUCTURES |          |

TYPICAL SECTIONS  
F.A.P. 545 (IL. RTE. 72)  
SECTION 114T-1  
CARROLL COUNTY  
STATION 244+43.50  
STRUCTURE NO. 008-1090