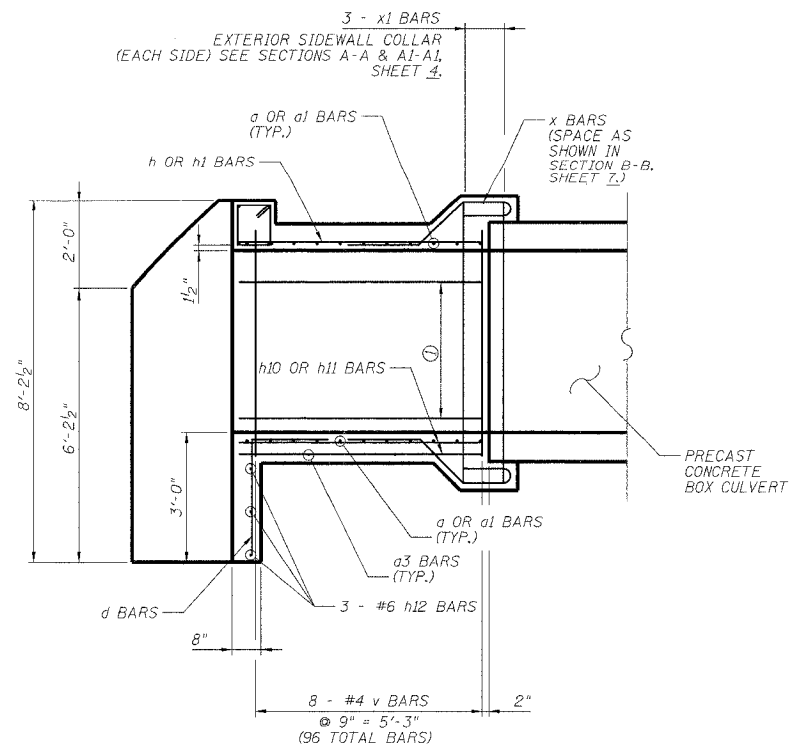


STATE OF ILLINOIS  
DEPARTMENT OF TRANSPORTATION

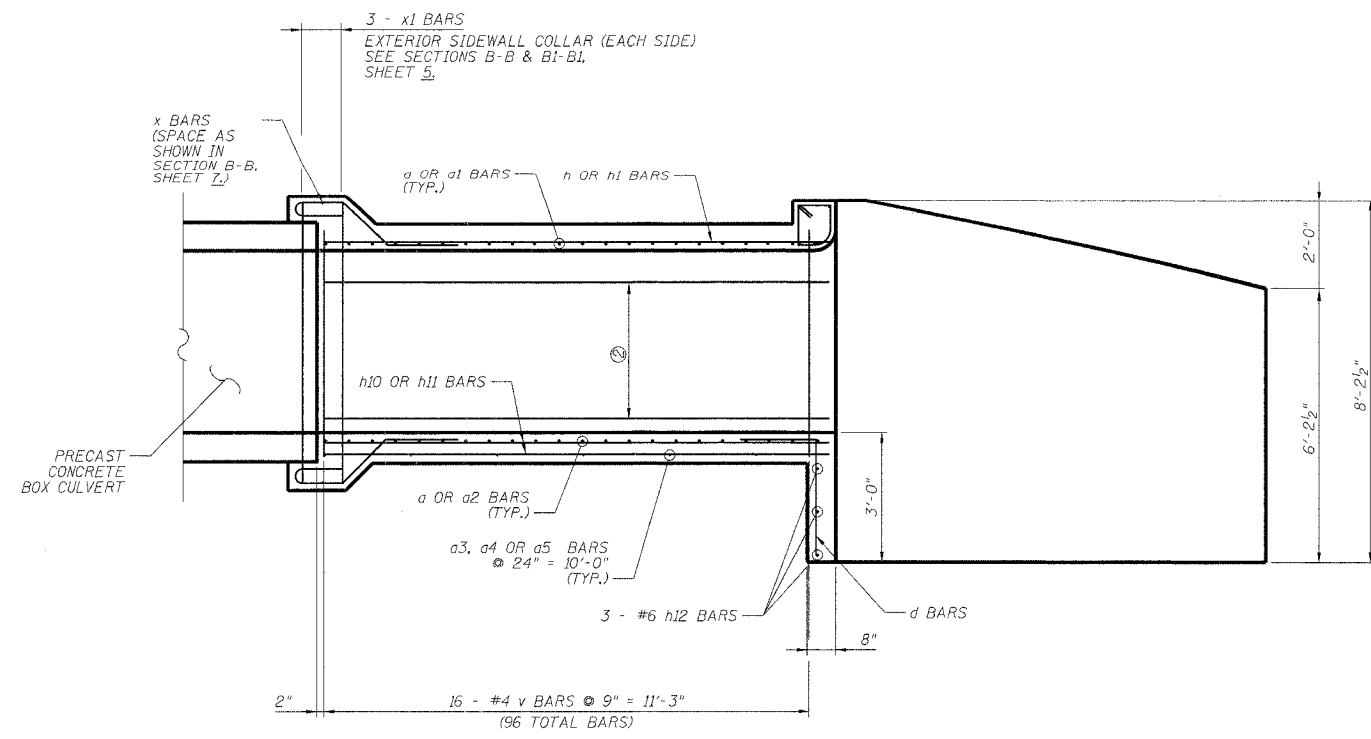
ROUTE NO.	SECTION	COUNTY	STATION	SHEET	SHEET NO.
F.A.P. 545	114T-1	CARROLL	118	43	06
FED. HIGH DIST. NO. 2		ILLINOIS	FED. AID PROJECT		

Contract # 64C31



**SHORT WALL**

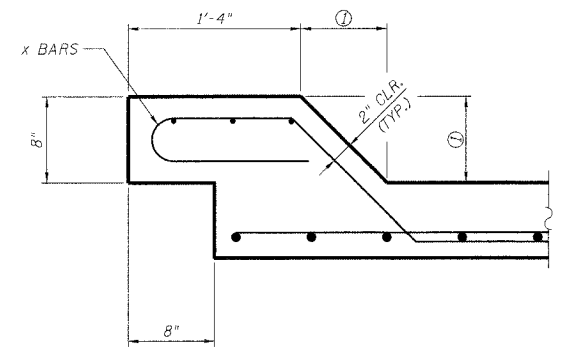
① 4 - #5 h6 OR h8 BARS @ 12" = 3'-0"  
(16 TOTAL BARS EACH)



**LONG WALL**

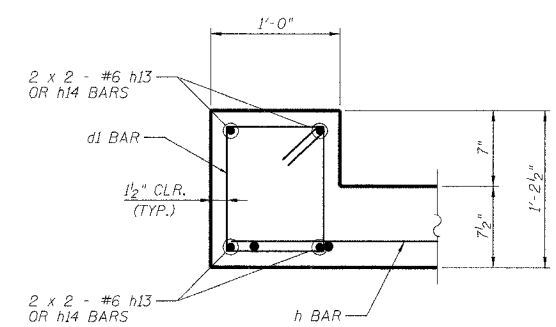
② 4 - #5 h7 OR h9 BARS @ 12" = 3'-0"  
(16 TOTAL BARS EACH)

**ELEVATION**

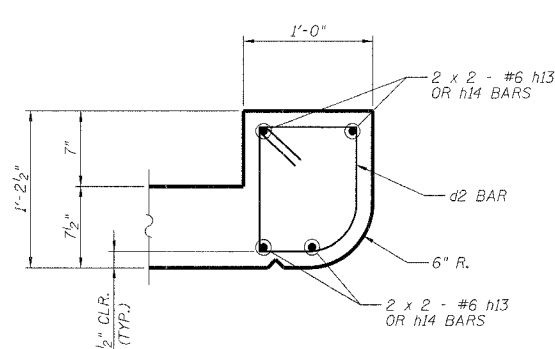


**PRECAST TO CAST-IN-PLACE CONNECTION COLLAR**

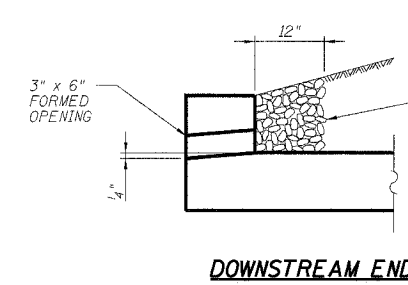
① TOP SLAB = 8 1/2"  
SIDEWALLS = 9"  
BOTTOM SLAB = 7 1/2"



**DOWNSTREAM END**

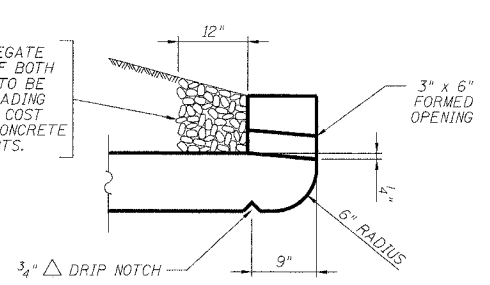


**UPSTREAM END**



**DOWNSTREAM END**

COARSE AGGREGATE FULL LENGTH OF BOTH HEADWALLS. TO BE PLACED BY GRADING CONTRACTOR. COST INCLUDED WITH CONCRETE BOX CULVERTS.



**UPSTREAM END**

**DRAIN DETAILS**

**HEADWALL DETAILS**

NOTE:  
BARS INDICATED THUS 2 x 3-#6 ETC.  
INDICATES 2 LINES OF BARS WITH 3  
LENGTHS PER LINE.

DESIGNED -	ASP
CHECKED -	WSP
DRAWN -	BGC
CHECKED -	ASP

EXAMINED	200
PASSED	ENGINEER OF BRIDGE DESIGN
	ENGINEER OF BRIDGES AND STRUCTURES

**DETAILS**  
F.A.P. 545 (IL. RTE. 72)  
SECTION 114T-1  
CARROLL COUNTY  
STATION 322+38.25  
STRUCTURE NO. 008-1091