

STATE OF ILLINOIS  
DEPARTMENT OF TRANSPORTATION

ROUTE NO.	SECTION	COUNTY	SPANS	SHEET	SHEET NO. 09 11 SHEETS
F.A.P. 545	114T-1	CARROLL	118	46	
FED. ROAD DIST. NO. 2	TITLE NO.	FED. AID PROJECT			

Contract # 64C31

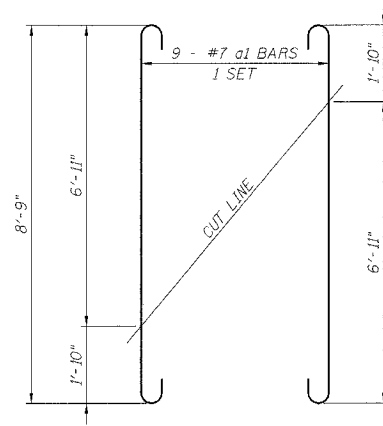
\* CULVERT  
BILL OF MATERIAL

Bar	No.	Size	Length	Shape
a	88	7	9'-4"	
a1	18	7	10'-5"	
a2	18	7	10'-11"	
a3	12	4	7'-8"	
a4	3	4	8'-9"	
a5	3	4	9'-3"	
d	40	4	4'-5"	
d1	21	4	4'-2"	
d2	21	4	4'-0"	
h	7	6	17'-0"	
h1	7	6	17'-5"	
h2	2	6	5'-7"	
h3	2	6	11'-5"	
h4	2	6	5'-9"	
h5	2	6	11'-8"	
h6	8	5	5'-5"	
h7	8	5	11'-6"	
h8	8	5	5'-8"	
h9	8	5	11'-9"	
h10	12	5	17'-0"	
h11	12	5	17'-5"	
h12	6	6	20'-0"	
h13	8	6	10'-1"	
h14	8	6	9'-4"	
h15	7	8	8'-0"	
h16	7	8	14'-6"	
h17	7	5	8'-0"	
h18	7	5	8'-8"	
v	96	4	5'-0"	
v1	2	5	7'-10"	
v2	4	5	7'-4"	
v3	2	5	5'-11"	
v4	2	4	7'-10"	
v5	4	4	7'-0"	
v6	2	4	5'-11"	
x	96	4	5'-5"	
x1	12	4	6'-4"	
x2	12	4	8'-11"	
x3	12	4	8'-8"	
Concrete Box Culverts			Cu. Yd.	36.0
Reinforcement Bars			Pound	5,253

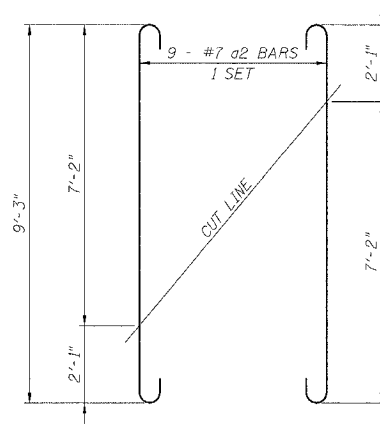
\* BILL OF MATERIAL IS THE TOTAL FOR BOTH END SECTIONS.

BAR BENDING DIAGRAMS

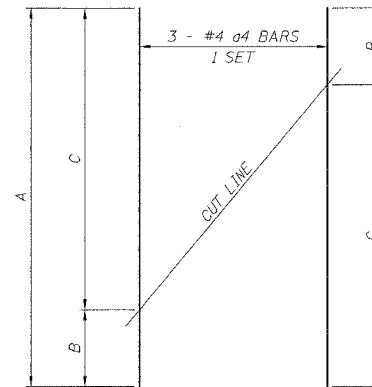
Bar	A		B		C		D	
	Ft.	In.	Ft.	In.	Ft.	In.	Ft.	In.
a	7	8	0	10	0	7	-	-
a1	8	9	0	10	0	7	-	-
a2	9	3	0	10	0	7	-	-
h15	5	0	3	0	2	8 1/2	1	3
h16	11	6	3	0	2	8 1/2	1	3
h17	5	0	3	0	1	3	2	8 1/2
h18	5	8	3	0	1	3	2	8 1/2



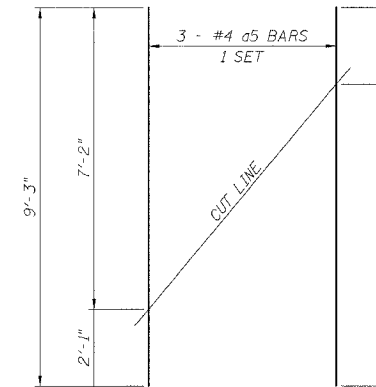
BARS a1



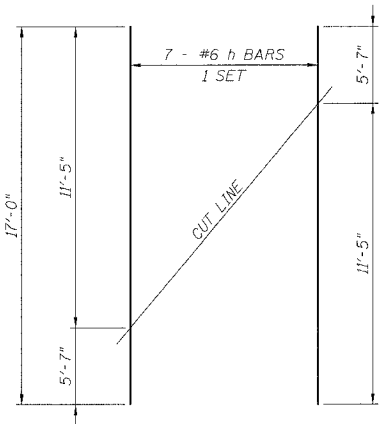
BARS a2



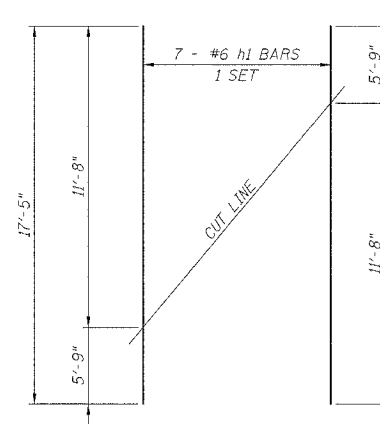
BARS a4



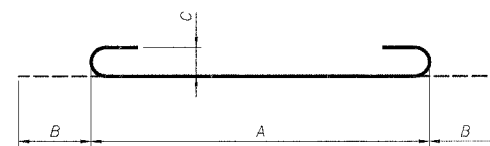
BARS a5



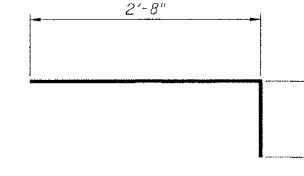
BARS h



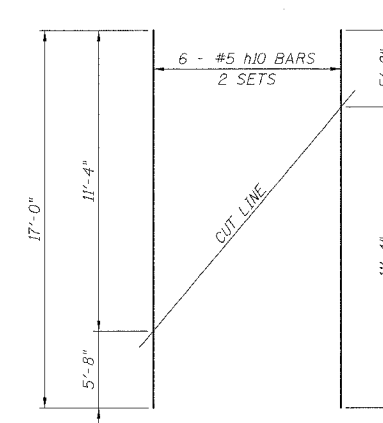
BARS h1



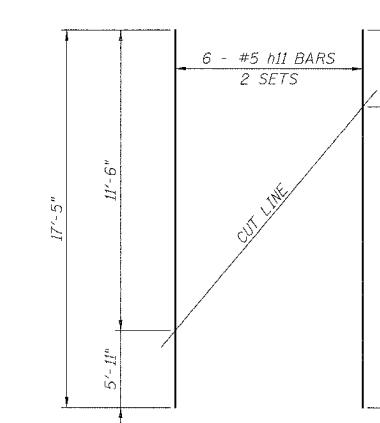
BARS a, a1 & a2



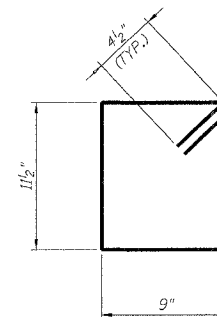
BAR d



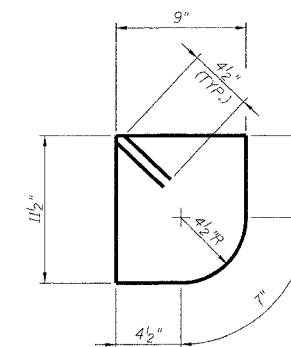
BARS h10



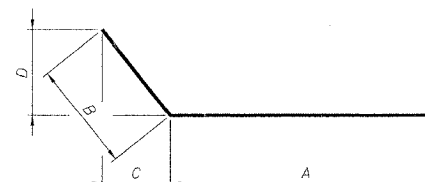
BARS h11



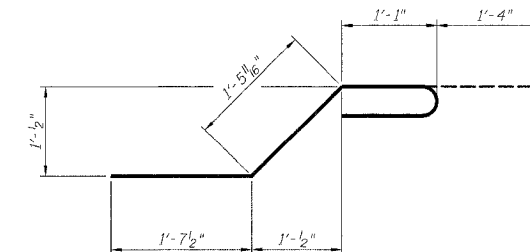
BAR d1



BAR d2



BARS h15 THRU h18



BAR x

FIELD CUTTING DIAGRAMS

ORDER BARS FULL LENGTH. CUT AS SHOWN AND USE REMAINDER OF BARS IN OPPOSITE END.

DESIGNED -	ASP
CHECKED -	WSP
DRAWN -	BGC
CHECKED -	ASP

EXAMINED	200
PASSED	ENGINEER OF BRIDGE DESIGN
	ENGINEER OF BRIDGES AND STRUCTURES

BARBILL & DETAILS  
F.A.P. 545 (IL. RTE. 72)  
SECTION 114T-1  
CARROLL COUNTY  
STATION 322+38.25  
STRUCTURE NO. 008-1091