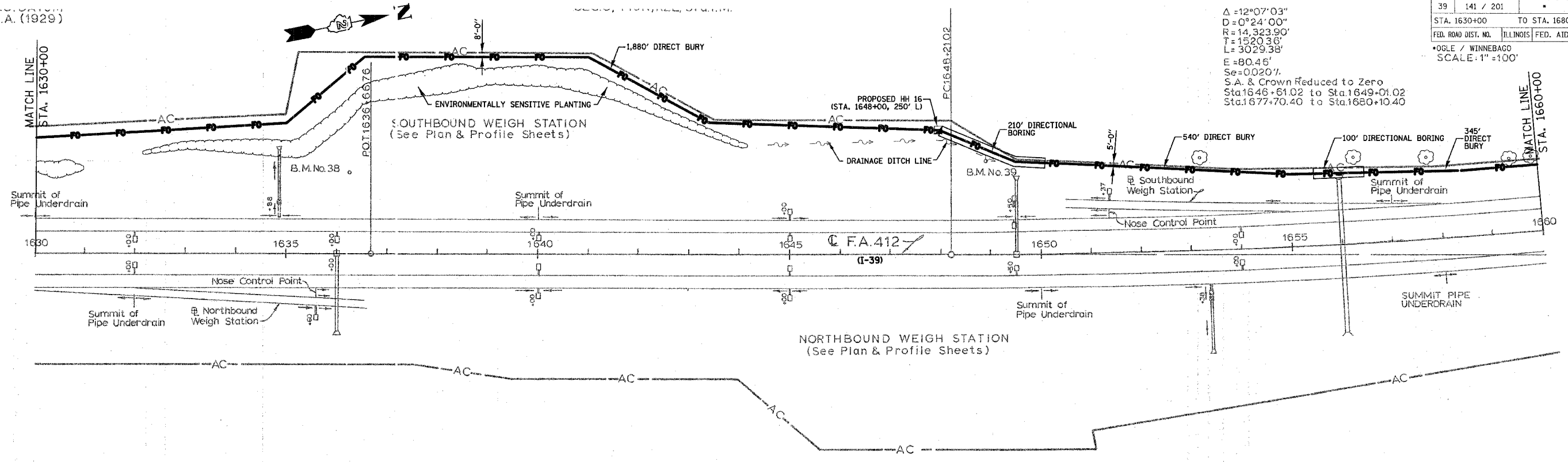


F.A.I. RTE.	SECTION	COUNTY	TOTAL SHEETS	SHEET NO.
39	141 / 201		46	13

STA. 1630+00 TO STA. 1680+00  
 FED. ROAD DIST. NO. ILLINOIS FED. AID PROJECT  
 \*OGLE / WINNEBAGO  
 SCALE: 1"=100'

5th G.A. (1929)

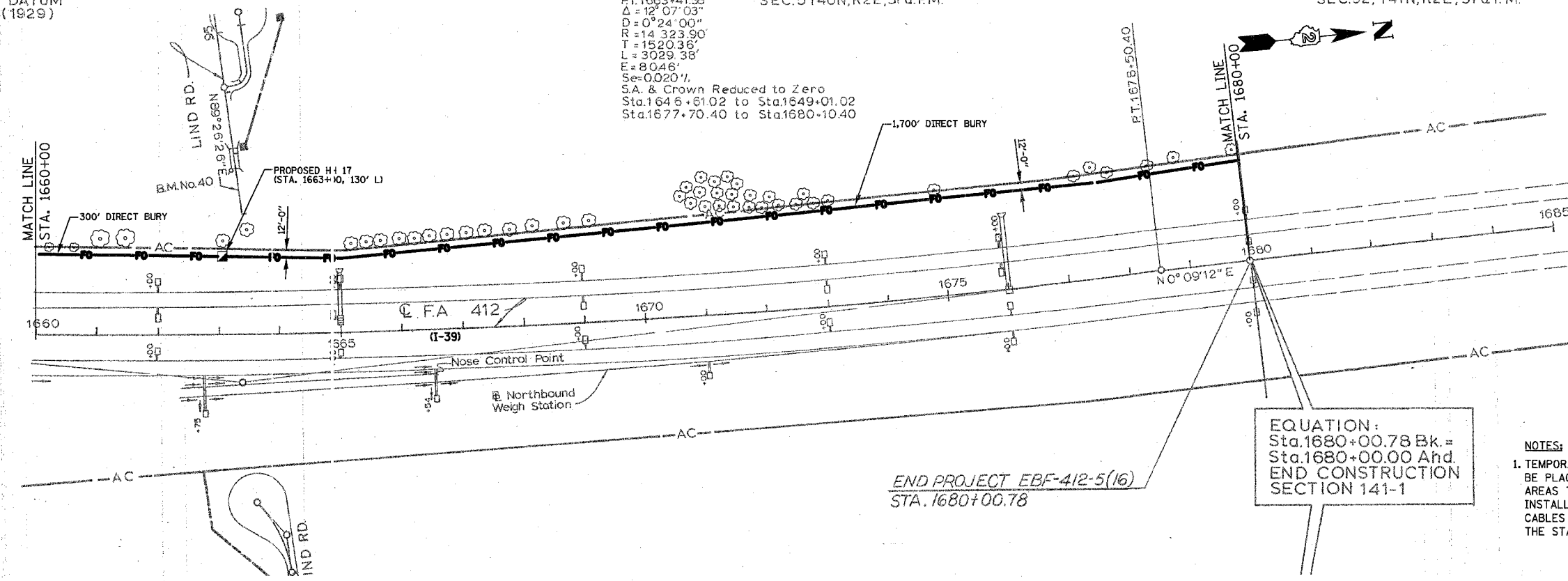


U.S.G.S. DATUM  
5th G.A. (1929)

P1.1663+41.33  
 Δ = 12°07'03"  
 D = 0°24'00"  
 R = 14,323.90'  
 T = 1520.36'  
 L = 3029.38'  
 E = 80.46'  
 Se = 0.0207%  
 S.A. & Crown Reduced to Zero  
 Sta.1646+81.02 to Sta.1649+01.02  
 Sta.1677+70.40 to Sta.1680+10.40

SEC.32, T41N,R2E,3rd.PM.

SCALE: 1"=11'



- NOTES:**
1. TEMPORARY EROSION CONTROL SEEDING SHALL BE PLACED EVERY SEVEN DAYS WITHIN THOSE AREAS THAT HAVE BEEN DISTURBED BY THE INSTALLATION OF THE PROPOSED FIBER OPTIC CABLES IN ACCORDANCE WITH SECTION 280 OF THE STANDARD SPECIFICATIONS.

PLOT DATE = 12/14/2008  
 PLOT NAME = C:\CNC\64C83\64C83-13.DWG\13.DWG\13.DWG  
 PLOT SCALE = 1"=100'  
 USER NAME = MSURER

DATE	BY	DESCRIPTION