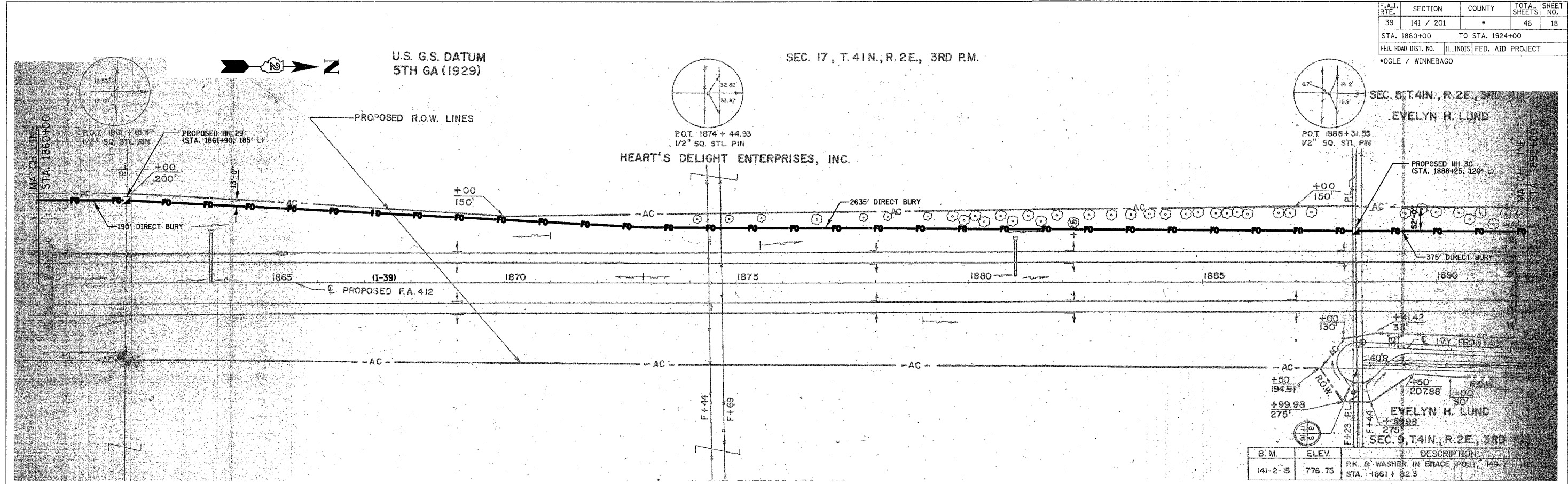
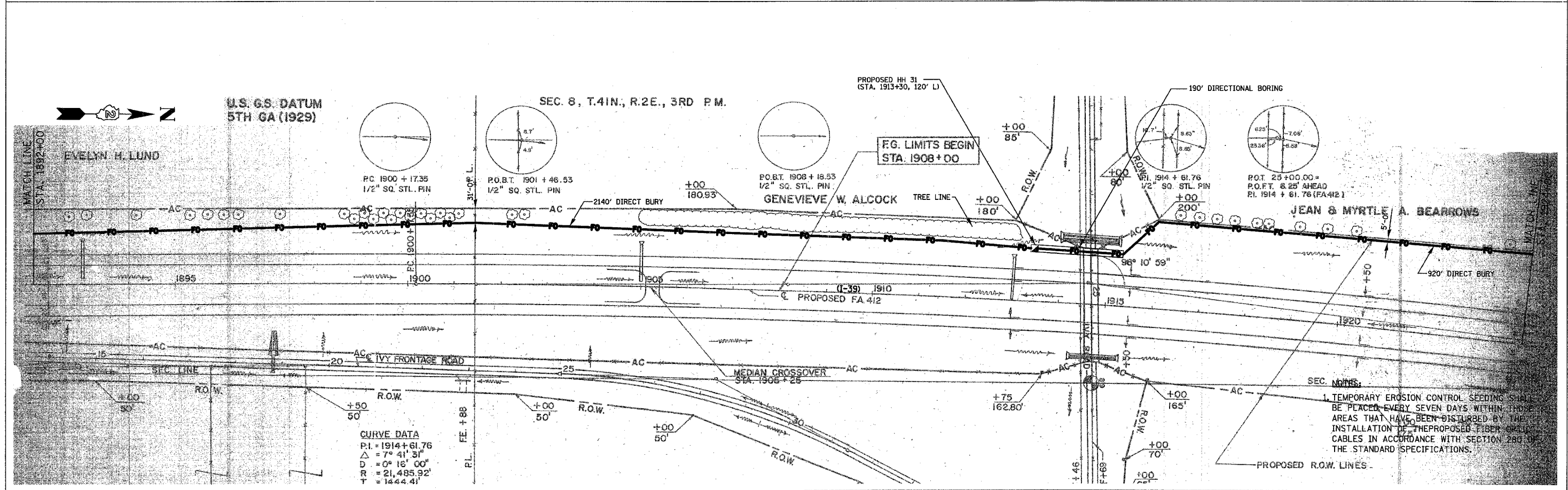


F.A.I. RTE.	SECTION	COUNTY	TOTAL SHEETS NO.
39	141 / 201	*	46 / 18
STA. 1860+00		TO STA. 1924+00	
FED. ROAD DIST. NO.		ILLINOIS FED. AID PROJECT	
*OGLE / WINNEBAGO			



B.M.	ELEV.	DESCRIPTION
141-2-15	776.75	RK. & WASHER IN BRACE POST, 149 STA. 1861+82.3



CURVE DATA

P.I.	= 1914+61.76
Δ	= 7° 41' 31"
D	= 0° 16' 00"
R	= 21,485.92'
T	= 1444.41'

1. TEMPORARY EROSION CONTROL SEEDING SHALL BE PLACED EVERY SEVEN DAYS WITHIN THOSE AREAS THAT HAVE BEEN DISTURBED BY THE INSTALLATION OF THE PROPOSED FIBER OPTIC CABLES IN ACCORDANCE WITH SECTION 280 OF THE STANDARD SPECIFICATIONS.

PLOT DATE = 12/14/2009
 FILE NAME = G:\ENVO\08-6798-13\DOT\CV\USA\SHRIBL.FD.pln_12.dgn
 USER NAME = AUSER8