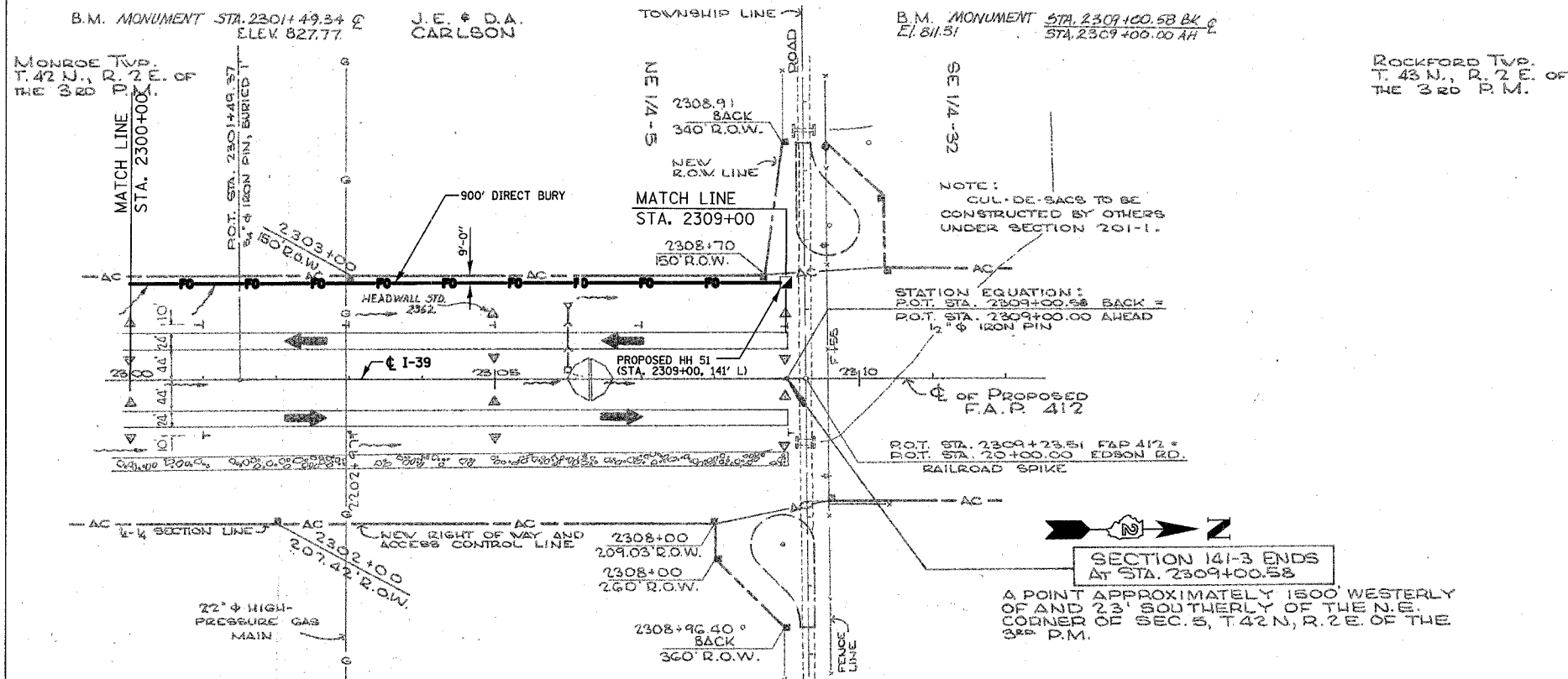


F.A.I. RTE.	SECTION	COUNTY	TOTAL SHEETS	SHEET NO.
39	141 / 201	•	46	26
STA. 2300+00 TO STA. 2325+00				
FED. ROAD DIST. NO.			ILLINOIS FED. AID PROJECT	
*OGLE / WINNEBAGO				



J.S.C. & G.S. DATUM
SEA LEVEL 1929
SEC. 5 T.42N. R.2E.
OF 3RD P.M.
OGLE COUNTY

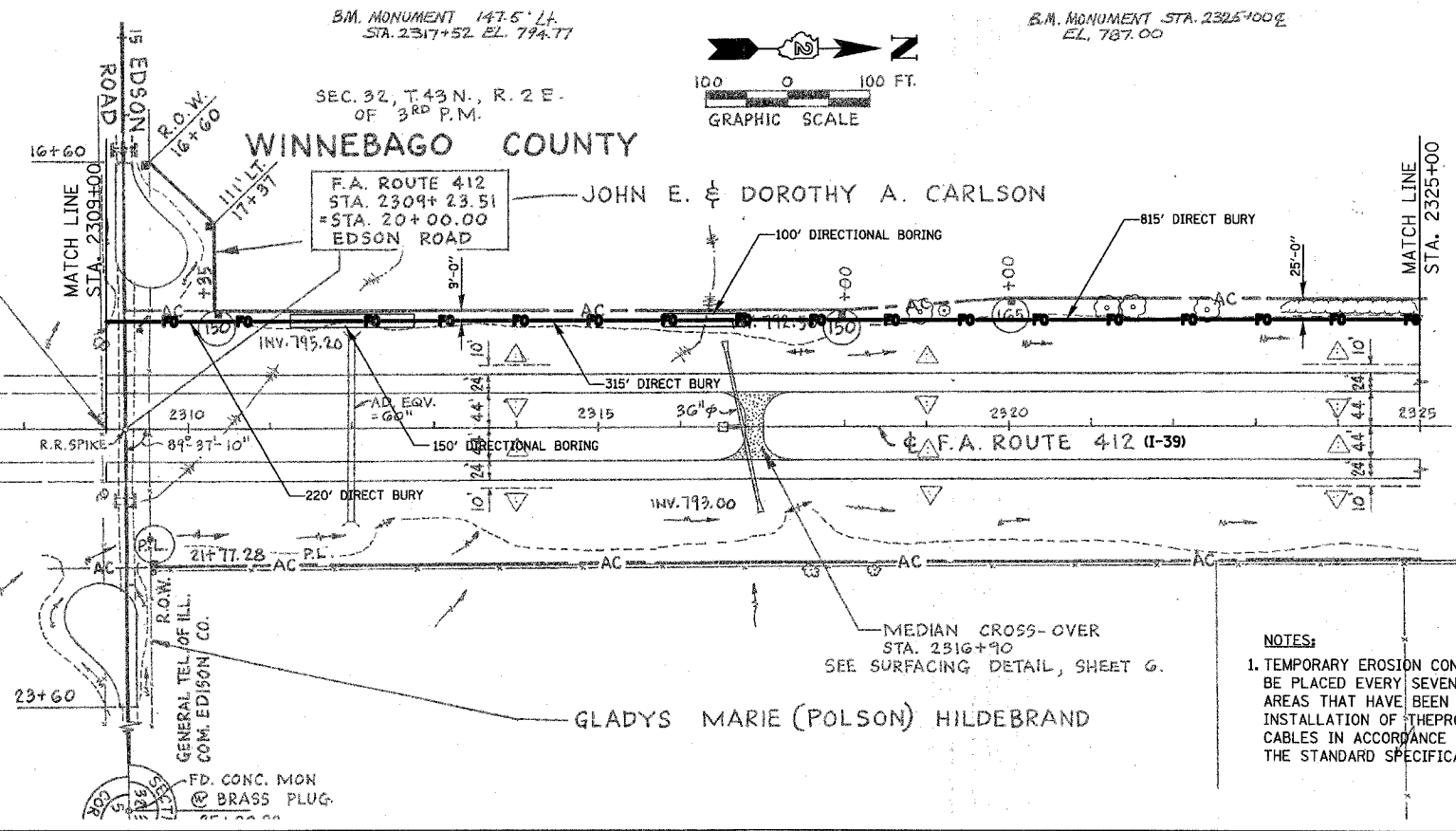
F.A. PROJECT
SECTION 201-1-1 BEGINS
STA. 2309+00.00 AHD.
= STA. 2309+00.58 BK.

A POINT 1500.93 FEET WEST
AND 23.51 FEET SOUTH OF THE
S.E. CORNER OF SECTION 32,
T.43 N., R. 2 E. OF THE 3RD P.M.

B.M. MONUMENT 147.5' L.F.
STA. 2317+52 EL. 794.77

B.M. MONUMENT STA. 2325+00
EL. 787.00

WINNEBAGO COUNTY
SEC. 32, T.43 N., R. 2 E.
OF 3RD P.M.



NOTES:
1. TEMPORARY EROSION CONTROL SEEDING SHALL
BE PLACED EVERY SEVEN DAYS WITHIN THOSE
AREAS THAT HAVE BEEN DISTURBED BY THE
INSTALLATION OF THE PROPOSED FIBER OPTIC
CABLES IN ACCORDANCE WITH SECTION 280 OF
THE STANDARD SPECIFICATIONS.

PLOT DATE = 12/14/2008
FILE NAME = G:\ENGS\08-6798-13\DOT\CIV\AS\1\SH1026.FD.Pln.26.dgn
PLOT SCALE = 1/8"=1'-0"
USER NAME = 40508

FD. CONC. MON
BRASS PLUG