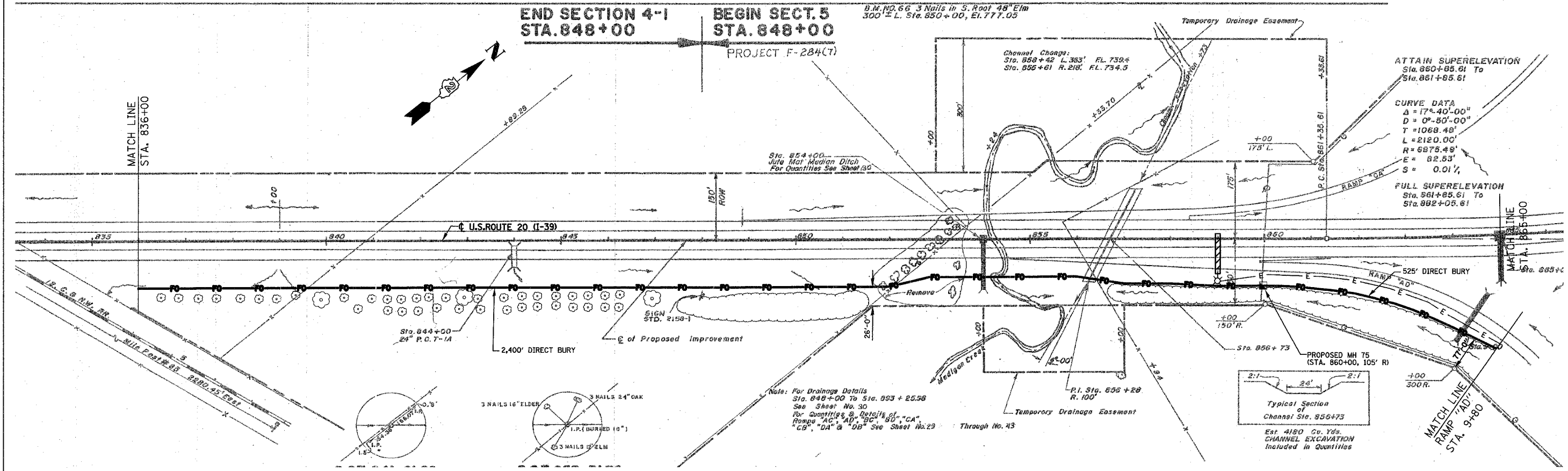
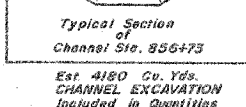


F.A.I. RTE.	SECTION	COUNTY	TOTAL SHEETS	SHEET NO.
39	141 / 201	*	46	34
STA. 836+00		TO STA. 9+80 (RAMP AD)		
FED. ROAD DIST. NO.		ILLINOIS FED. AID PROJECT		
*OGLE / WINNEBAGO				



Note: For Drainage Details
Sta. 848+00 To Sta. 893 + 25.58
See Sheet No. 30
For Quantities & Details of
Ramps "AC", "AD", "BC", "BD", "CA",
"CB", "DA" & "DB" See Sheet No. 29 Through No. 43



NOTES:
1. TEMPORARY EROSION CONTROL SEEDING SHALL BE PLACED EVERY SEVEN DAYS WITHIN THOSE AREAS THAT HAVE BEEN DISTURBED BY THE INSTALLATION OF THE PROPOSED FIBER OPTIC CABLES IN ACCORDANCE WITH SECTION 280 OF THE STANDARD SPECIFICATIONS.

PLOT DATE = 12/14/2006
 PLOT SCALE = 1"=50'
 USER NAME = #USER#