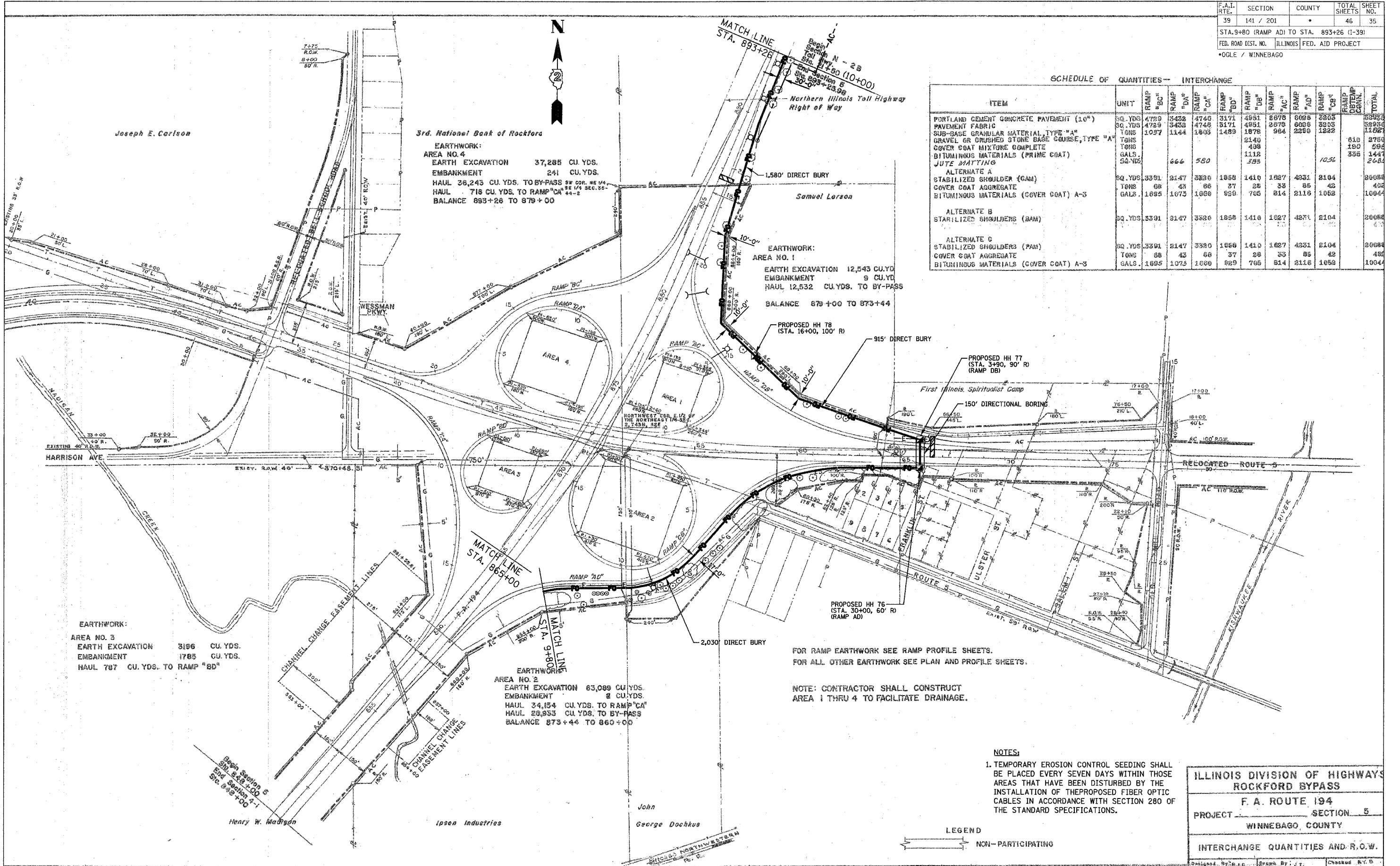


F.A.I. RTE.	SECTION	COUNTY	TOTAL SHEETS	SHEET NO.
39	141 / 201	*	46	35
STA. 9+80 (RAMP AD) TO STA. 893+26 (I-39)				
FED. ROAD DIST. NO. ILLINOIS FED. AID PROJECT				
*OGLE / WINNEBAGO				



EARTHWORK:
AREA NO. 4
 EARTH EXCAVATION 37,285 CU. YDS.
 EMBANKMENT 241 CU. YDS.
 HAUL 36,243 CU. YDS. TO BY-PASS SW COR. NE 1/4 SE 1/4 SEC. 35-
 HAUL 718 CU. YDS. TO RAMP "CA"
 BALANCE 893+26 TO 879+00

EARTHWORK:
AREA NO. 1
 EARTH EXCAVATION 12,543 CU. YD.
 EMBANKMENT 9 CU. YD.
 HAUL 12,532 CU. YDS. TO BY-PASS
 BALANCE 879+00 TO 873+44

EARTHWORK:
AREA NO. 3
 EARTH EXCAVATION 3196 CU. YDS.
 EMBANKMENT 1785 CU. YDS.
 HAUL 787 CU. YDS. TO RAMP "BD"

EARTHWORK:
AREA NO. 2
 EARTH EXCAVATION 63,089 CU. YDS.
 EMBANKMENT 8 CU. YDS.
 HAUL 34,154 CU. YDS. TO RAMP "CA"
 HAUL 26,953 CU. YDS. TO BY-PASS
 BALANCE 873+44 TO 860+00

SCHEDULE OF QUANTITIES - INTERCHANGE

ITEM	UNIT	INTERCHANGE										TOTAL
		RAMP "BC"	RAMP "DA"	RAMP "CA"	RAMP "BD"	RAMP "DB"	RAMP "AC"	RAMP "AD"	RAMP "CB"	RAMP "CD"	RAMP "CE"	
PORTLAND CEMENT CONCRETE PAVEMENT (10")	SQ. YDS.	4729	3432	4740	3171	4851	2078	6028	3853	3993	3993	3993
PAVEMENT FABRIC	SQ. YDS.	4729	3432	4740	3171	4851	2078	6028	3853	3993	3993	3993
SUB-BASE GRANULAR MATERIAL, TYPE "A"	TONS	1097	1144	1803	1489	1878	964	2280	1322	1322	1322	1322
GRAVEL OR CRUSHED STONE BASE COURSE, TYPE "A"	TONS					2140						612
COVER COAT MIXTURE COMPLETE	TONS					498						190
BITUMINOUS MATERIALS (PRIME COAT)	GALS.					1112						190
JUTE MATTING	SQ. YDS.	664	580		385					1036		385
ALTERNATE A												
STABILIZED SHOULDER (SAM)	SQ. YDS.	3391	2147	3320	1858	1410	1627	4831	2104			20088
COVER COAT AGGREGATE	TONS	68	43	66	37	28	33	85	42			48
BITUMINOUS MATERIALS (COVER COAT) A-3	GALS.	1695	1073	1660	829	705	814	2116	1052			10044
ALTERNATE B												
STABILIZED SHOULDER (SAM)	SQ. YDS.	3391	2147	3320	1858	1410	1627	4831	2104			20088
COVER COAT AGGREGATE	TONS	68	43	66	37	28	33	85	42			48
BITUMINOUS MATERIALS (COVER COAT) A-3	GALS.	1695	1073	1660	829	705	814	2116	1052			10044

FOR RAMP EARTHWORK SEE RAMP PROFILE SHEETS.
 FOR ALL OTHER EARTHWORK SEE PLAN AND PROFILE SHEETS.

NOTE: CONTRACTOR SHALL CONSTRUCT AREA 1 THRU 4 TO FACILITATE DRAINAGE.

- NOTES:**
- TEMPORARY EROSION CONTROL SEEDING SHALL BE PLACED EVERY SEVEN DAYS WITHIN THOSE AREAS THAT HAVE BEEN DISTURBED BY THE INSTALLATION OF THE PROPOSED FIBER OPTIC CABLES IN ACCORDANCE WITH SECTION 280 OF THE STANDARD SPECIFICATIONS.

LEGEND
 [Symbol] NON-PARTICIPATING

ILLINOIS DIVISION OF HIGHWAYS
ROCKFORD BYPASS
 F. A. ROUTE 194
 PROJECT _____ SECTION 5
 WINNEBAGO, COUNTY
 INTERCHANGE QUANTITIES AND R.O.W.

PLOT DATE = 12/14/2006
 FILE NAME = G:\ENGIN\68-6799-13\DOT\CHAS\194\194B35.FD_P1_25.dgn
 USER NAME = JUSER8