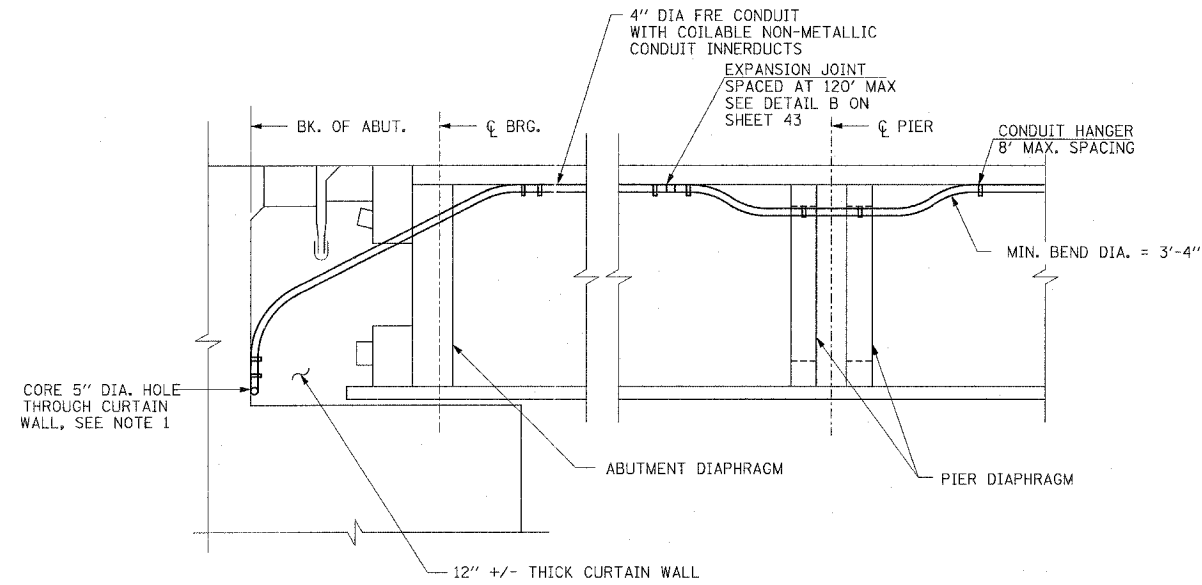
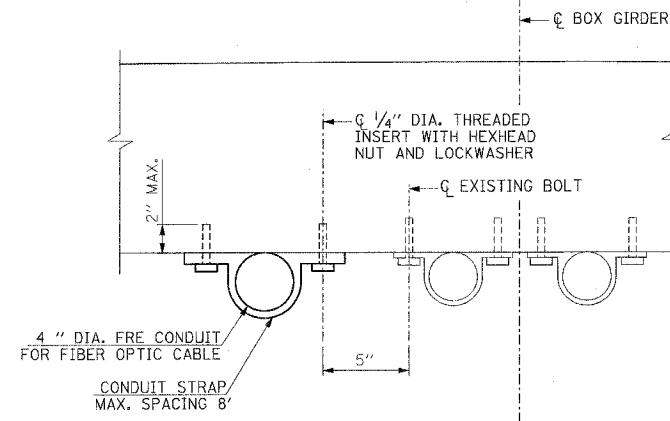


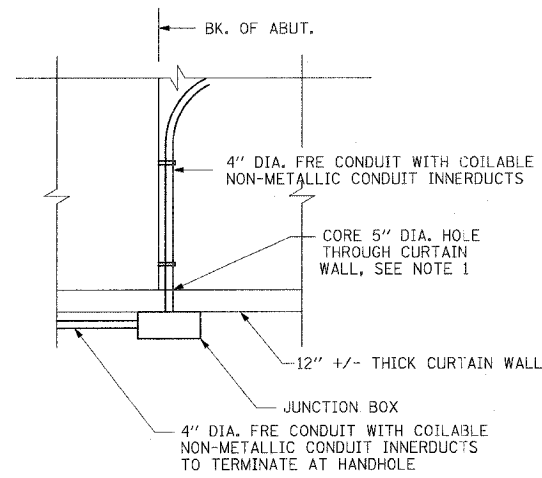
F.A.I. RTE.	SECTION	COUNTY	TOTAL SHEETS	SHEET NO.
39	141 / 201	•	46	43
STA.		TO STA.		
FED. ROAD DIST. NO.		ILLINOIS	FED. AID PROJECT	
• OGLE / WINNEBAGO				



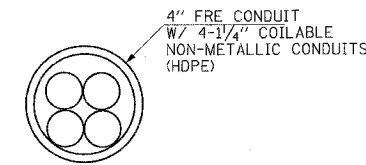
ELEVATION-CONDUIT LAYOUT DETAIL
TYPICAL AT EACH END OF BRIDGE



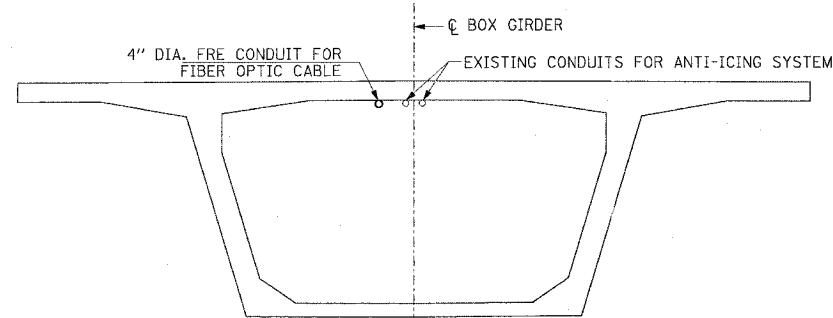
CONDUIT HANGER DETAIL



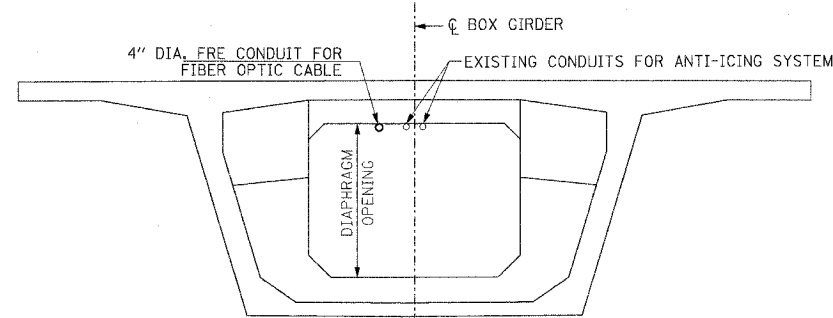
PLAN-CONDUIT LAYOUT DETAIL
TYPICAL AT EACH END OF BRIDGE



TYPICAL CONDUIT DETAIL



BOX GIRDER BETWEEN PIERS
(LOOKING NORTH)



BOX GIRDER AT PIERS
(LOOKING NORTH)

NOTES:

- 4" DIA. FRE CONDUIT SHALL PASS THRU THE CURTAIN WALL AND TERMINATE INTO A JUNCTION BOX ATTACHED TO THE EXTERIOR FACE OF THE CURTAIN WALL. THE HOLE SHALL BE SEALED WITH A COMMERCIAL GRADE SILICONE SEALANT.
- NO DRILLING IS PERMITTED WITHOUT THE APPROVAL OF THE ENGINEER.
- ALL MATERIAL INCLUDING BUT NOT LIMITED TO CONDUIT, 4" DIA. FRE CONDUIT, 1-1/4" COILABLE NON-METALLIC CONDUITS, JUNCTION BOXES, HANGERS, STRAPS, CORING, EXPANSION JOINTS AND INSERTS NECESSARY TO INSTALL THE CONDUIT TO THE STRUCTURE AS SHOWN ON THIS DRAWING ARE INCLUDED IN PAY ITEM: "CONDUIT ATTACHED TO BRIDGE STRUCTURE, 4", FIBERGLASS REINFORCED EPOXY. SPECIAL".
- SEE "BRIDGE ATTACHMENT DETAILS" (SHEET NO.44) FOR FIBER OPTIC CONDUIT ATTACHMENTS TO ALL OTHER BRIDGE STRUCTURES.
- THE 4" FRE CONDUIT SHALL BE BULLET RESISTANT.
- STEEL NUTS, BOLTS AND WASHERS SHALL BE ACCORDING TO ASTM A307.

REVISIONS	
NAME	DATE

ILLINOIS DEPARTMENT OF TRANSPORTATION

**KISHWAUKEE RIVER BRIDGE
ATTACHMENT DETAILS**

SCALE: VERT. N/A
 HORIZ. N/A
 DATE: DECEMBER 15, 2006

DRAWN BY CKL
 CHECKED BY CAC

PLOT DATE = 12/15/2006
 FILE NAME = C:\CNC\679813\DOT\CIV\SHA\SH7843.Dwg
 PLOT SCALE = 1/8"=1'-0"
 USER NAME = JUSER8