

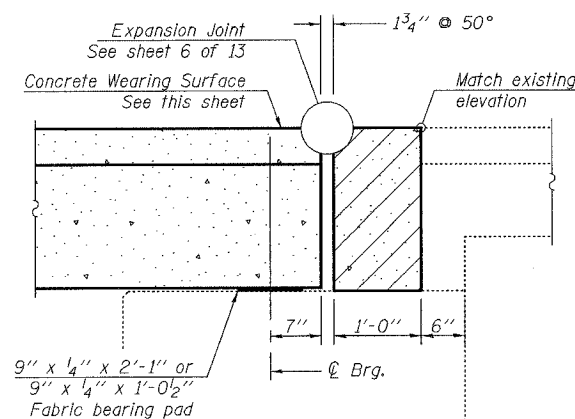
ROUTE NO.	SECTION	COUNTY	SHEET NO.	SHEET TOTAL	SHEET NO.
FAS 55	*	WINNEBAGO	15	52	13 SHEETS
FED. ROAD DIST. NO. 7	ILLINOIS	FED. AID PROJECT			

\*(102 BR-1, 102 BR-2, 102 BR-3)D  
Contract # 64C93

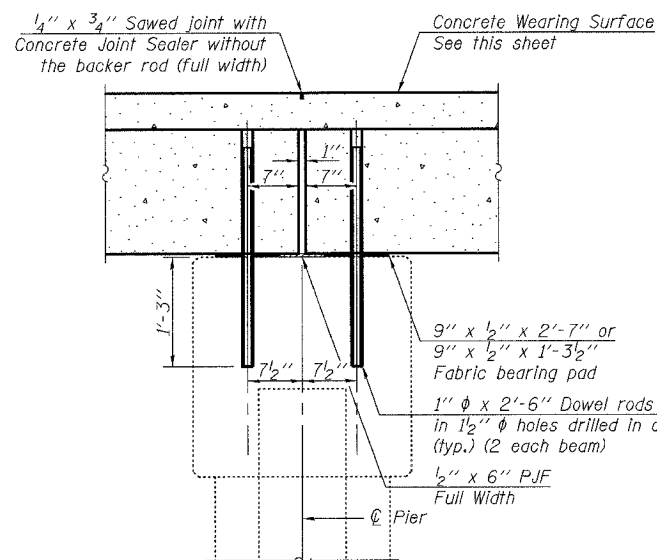
**NOTES:**

After beams have been erected, holes shall be drilled into substructure and anchor dowels placed. Dowel holes shall be filled with non-shrink grout to top of beam and allowed to cure min. 24 hours prior to grouting the shear keys.  
Ends of beams shall be aligned at the expansion joints. Any lined variation in the beam lengths shall be placed at the fixed joint.  
See sheet 5 of 13 for bearing pad details.

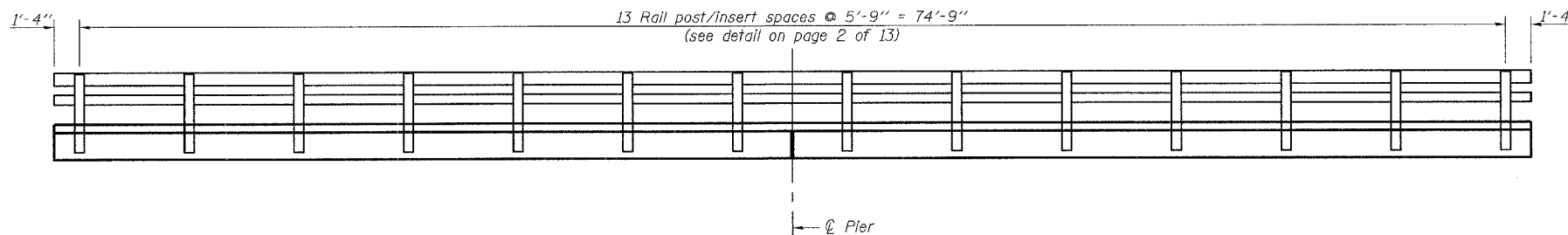
Concrete wearing surface to be poured after grouting of shear keys.  
Hatched area to be poured after concrete wearing surface is in place. Quantity included with Concrete Structures on sheet 8 of 13.  
Dowel rods drilled in cap are included in the cost of Precast Prestressed Concrete Deck Beams (17" depth). All horizontal dimensions are at right angles to beam ends.



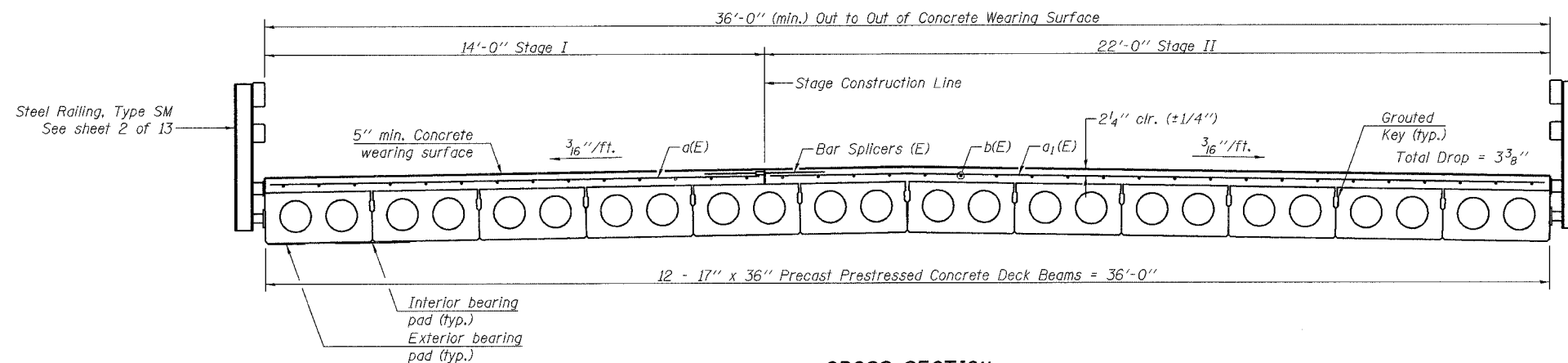
**SECTION THRU ABUTMENTS**



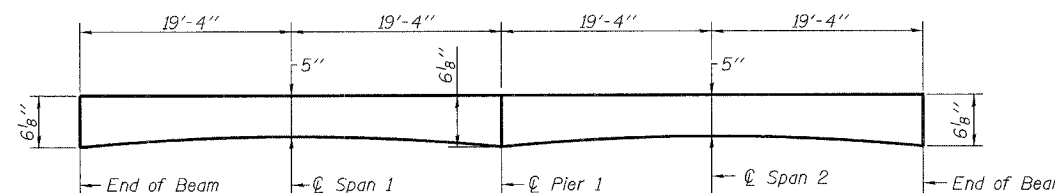
**SECTION THRU FIXED PIER**



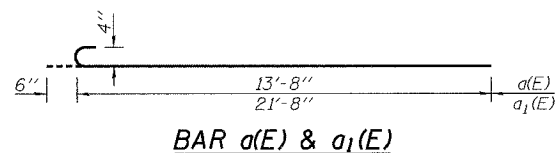
**RAIL POST SPACING**



**CROSS SECTION**



**REINFORCED CONCRETE WEARING SURFACE PROFILE**



**BAR a(E) & a1(E)**

**BILL OF MATERIAL**

Bar	No.	Size	Length	Shape
a(E)	78	#4	14'-2"	C
a1(E)	78	#4	22'-2"	C
b(E)	108	#4	26'-11"	—
Reinforcement Bars, Epoxy Coated		Pound		3840
Precast Prestressed Conc. Deck Bms. (17")		Sq. Ft.		2784
Concrete Wearing Surface, 5"		Sq. Yd.		310
Bar Splicers		Each		78

**rjngroup**

Excellence through Ownership

200 West Front Street  
Wheaton, IL 60187

ILLINOIS DEPARTMENT OF TRANSPORTATION  
SUPERSTRUCTURE DETAILS I

IL-70 OVER TRIBUTARY TO PECATONICA RIVER  
FAS RTE 55

SECTION (102 BR-1, 102 BR-2, 102 BR-3)D  
WINNEBAGO COUNTY

STATION 302+76.80

STRUCTURE NO. 101-0146

DATE: 12/15/2006

DRAWN BY LCM  
CHECKED BY BLB