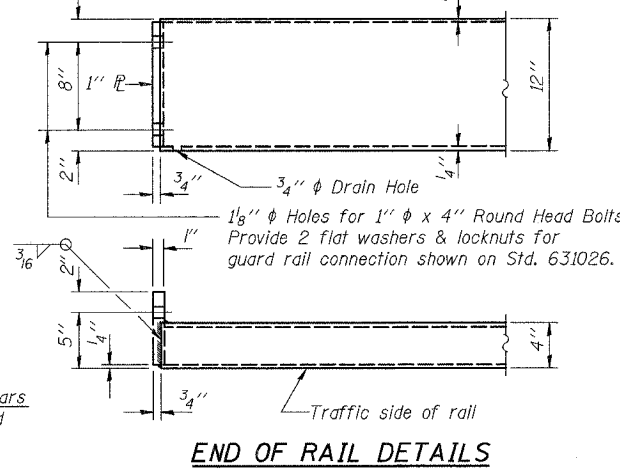
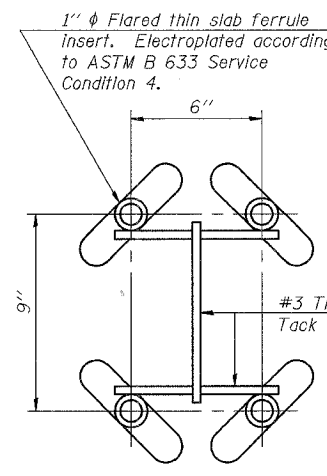
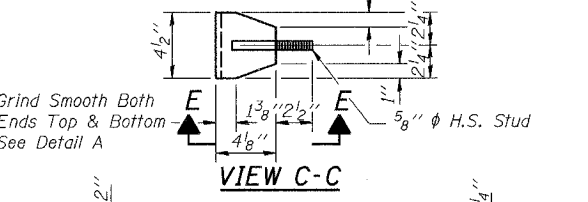
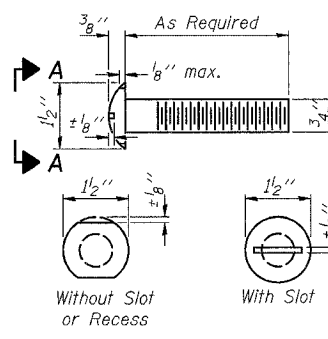
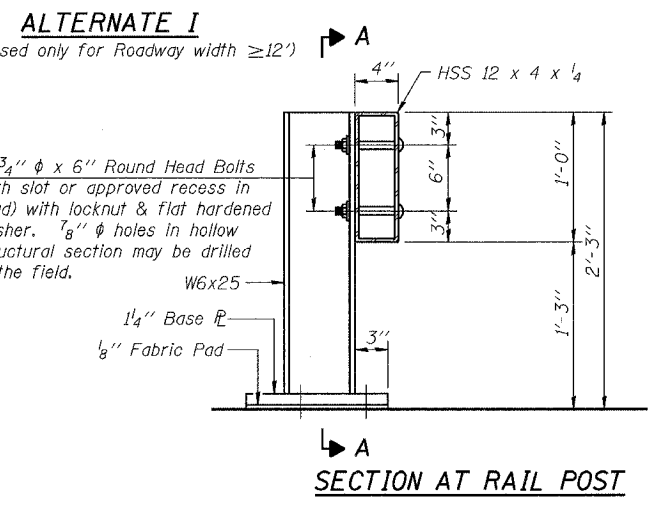
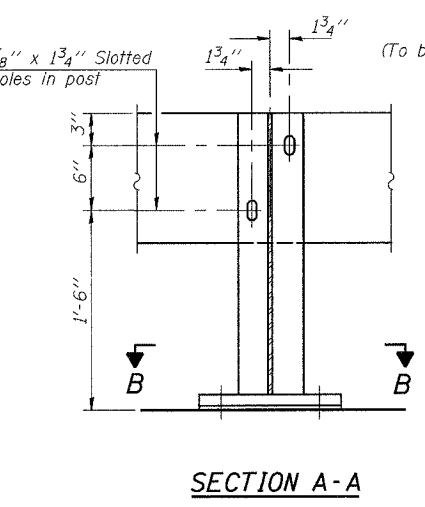
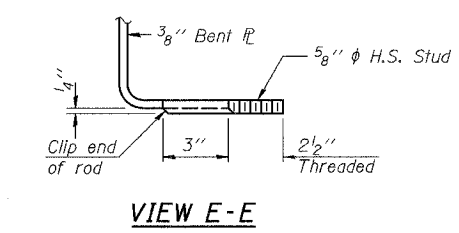
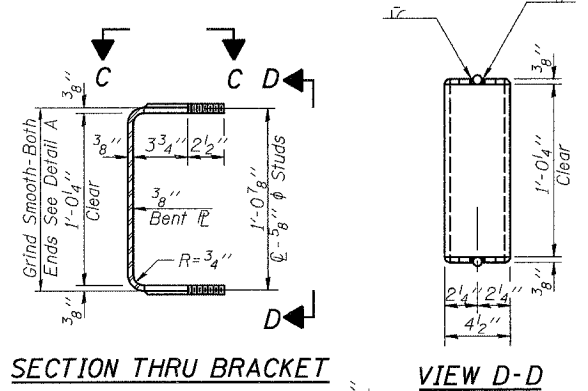
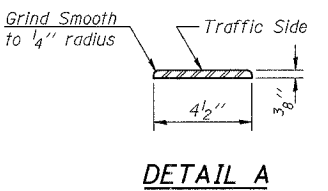
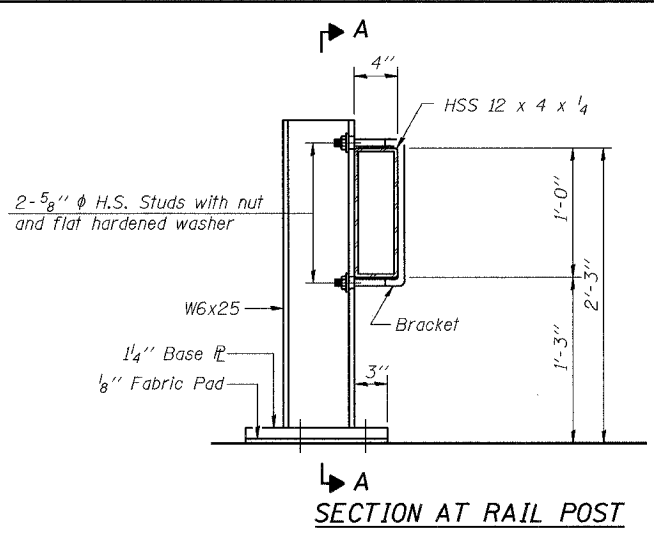
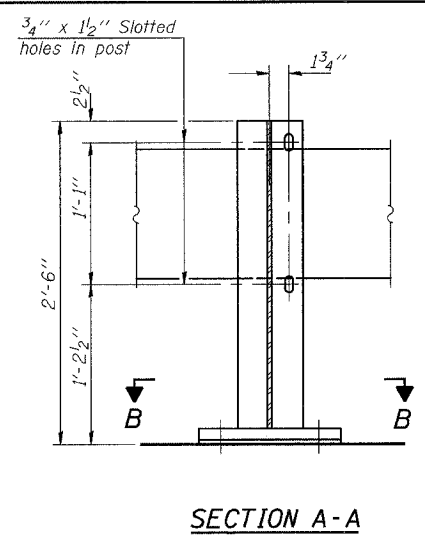
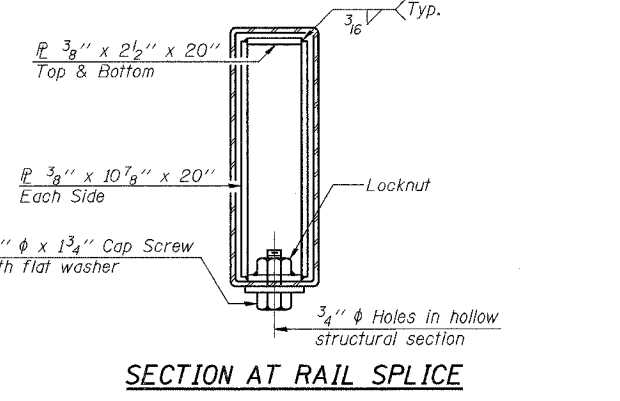
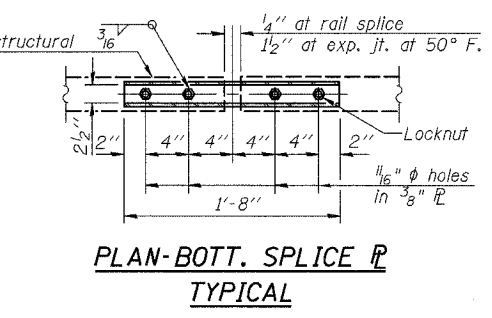
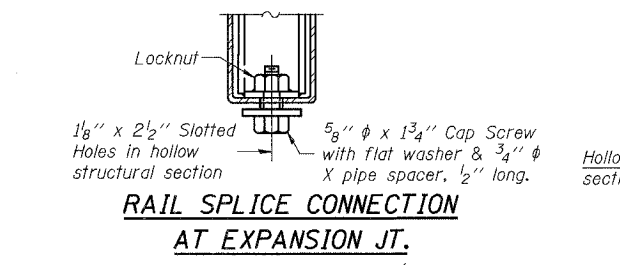
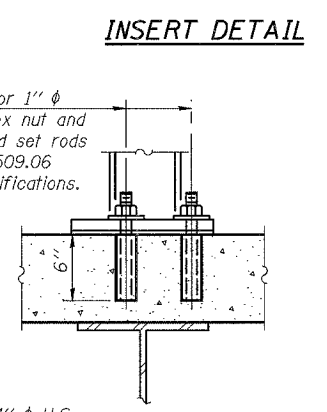
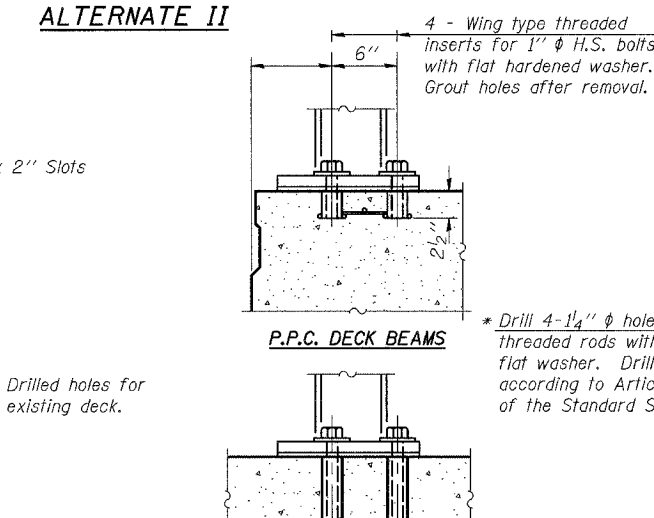
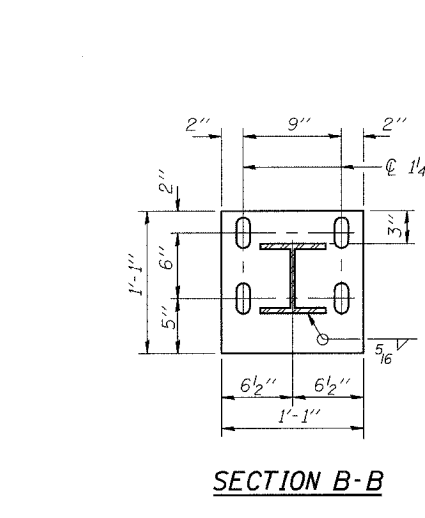


ROUTE NO.	SECTION	COUNTY	SHEETS	SHEET NO.
FAS 55	*	WINNEBAGO	24	52
SHEET NO. 13				
13 SHEETS				
* (102 BR-1, 102 BR-2, 102 BR-3)D				
Contract # 64C93				



Notes:
 The contact surfaces between post flange, rail and inside face of bracket for Alternate I shall be free of all lubricants.
 The nut for 5/8 inch high strength studs used in Alternate I to connect bracket to post shall be tightened to a snug fit and given an additional one half turn.
 See Roadway plans for locations and quantity.



R-25 11-1-06 (10'-9" Maximum Post Spacing)

rjngroup
 Excellence through Ownership
 200 West Front Street
 Wheaton, IL 60187

ILLINOIS DEPARTMENT OF TRANSPORTATION
 STEEL RAILING (TEMPORARY)
 IL-70 OVER TRIBUTARY TO PECATONICA RIVER
 FAS RTE 55
 SECTION (102 BR-1, 102 BR-2, 102 BR-3)D
 WINNEBAGO COUNTY
 STATION 302+76.80
 STRUCTURE NO. 101-0146
 DATE: 12/15/2006

DRAWN BY LCM
 CHECKED BY BLB