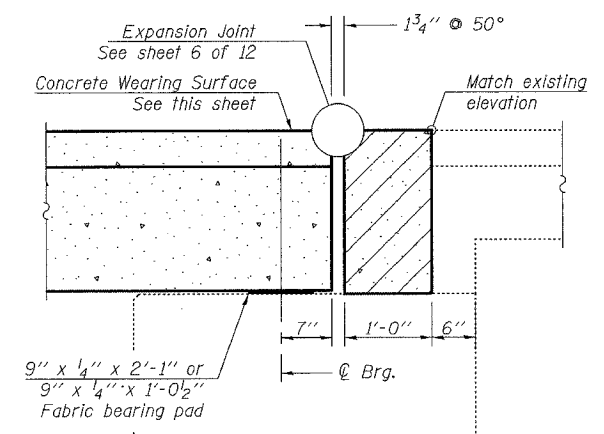


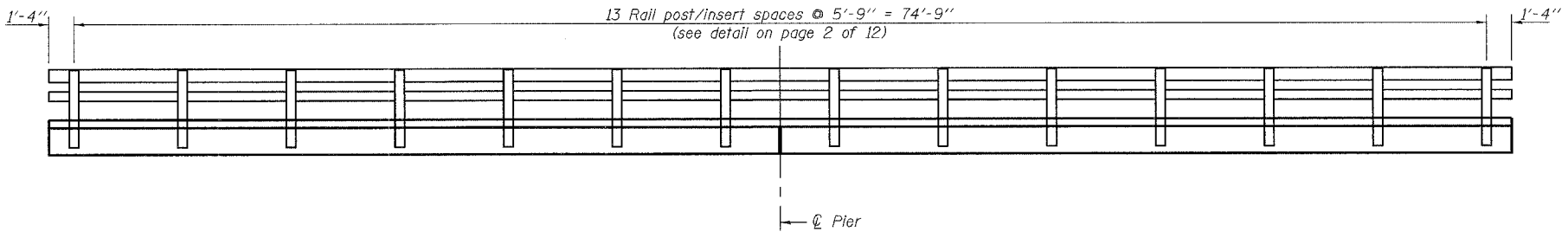
ROUTE NO.	SECTION	COUNTY	TOTAL SHEETS	*SHEET NO.	SHEET NO.
FAS 55	*	WINNEBAGO	40	52	12 SHEETS
FED. ROAD DIST. NO. 7	ILLINOIS	FED. AID PROJECT			

*(102 BR-1, 102 BR-2, 102 BR-3)D
Contract # 64C93

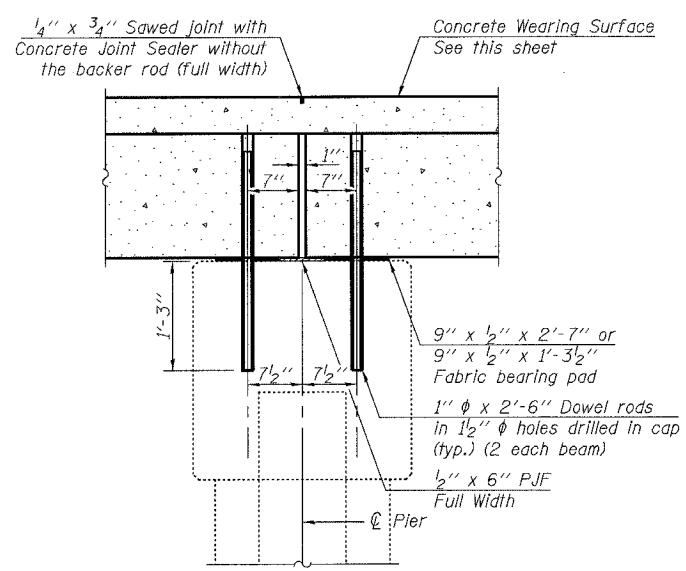
NOTES:
 After beams have been erected, holes shall be drilled into substructure and anchor dowels placed. Dowel holes shall be filled with non-shrink grout to top of beam and allowed to cure min. 24 hours prior to grouting the shear keys.
 Ends of beams shall be aligned at the expansion joints. Any lined variation in the beam lengths shall be placed at the fixed joint.
 See sheet 5 of 12 for bearing pad details.
 Concrete wearing surface to be poured after grouting of shear keys.
 Hatched area to be poured after concrete wearing surface is in place. Quantity included with Concrete Structures on sheet 8 of 12.
 Dowel rods drilled in cap are included in the cost of Precast Prestressed Concrete Deck Beams (17" depth).
 All horizontal dimensions are at right angles to beam ends.



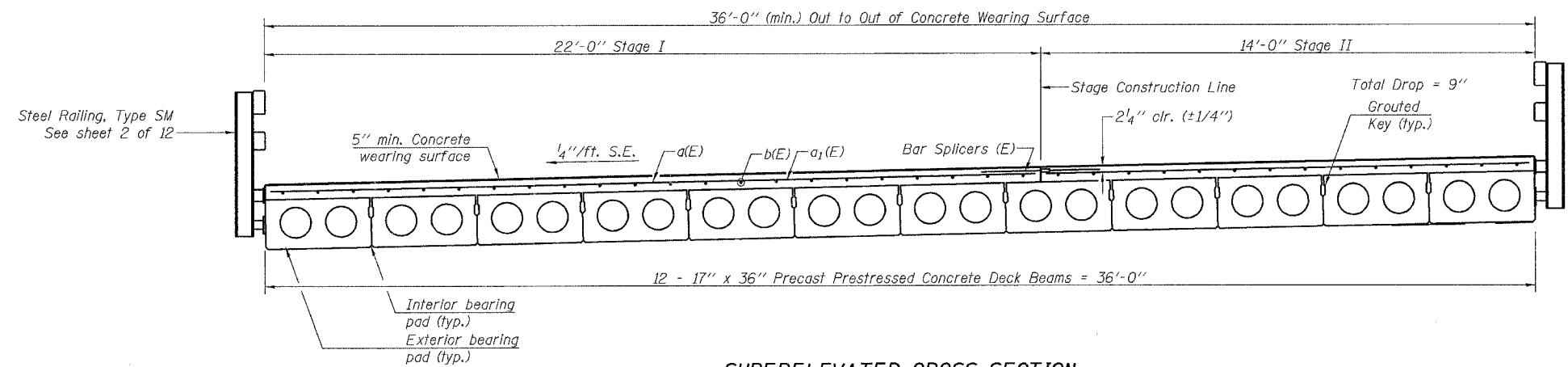
SECTION THRU ABUTMENTS



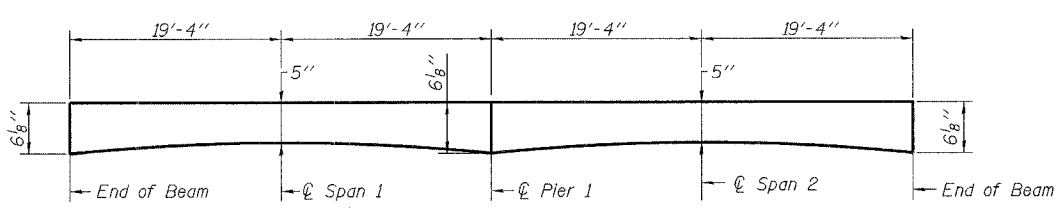
RAIL POST SPACING



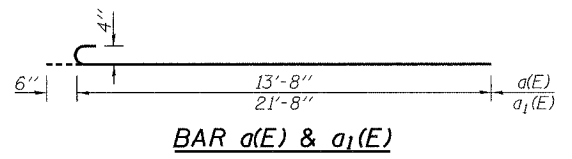
SECTION THRU FIXED PIER



SUPERELEVATED CROSS SECTION



REINFORCED CONCRETE WEARING SURFACE PROFILE



BAR a(E) & a1(E)

BILL OF MATERIAL

Bar	No.	Size	Length	Shape
a(E)	78	#4	14'-2"	C
a1(E)	78	#4	22'-2"	C
b(E)	108	#4	26'-11"	—
Reinforcement Bars, Epoxy Coated		Pound	3840	
Precast Prestressed Conc. Deck Bms. (17")		Sq. Ft.	2784	
Concrete Wearing Surface, 5"		Sq. Yd.	310	
Bar Splicers		Each	78	

rjngroup
 Excellence through Ownership
 200 West Front Street
 Wheaton, IL 60187

ILLINOIS DEPARTMENT OF TRANSPORTATION
 SUPERSTRUCTURE DETAILS I
 IL-70 OVER TRIBUTARY TO PECATONICA RIVER
 FAS RTE 55
 SECTION (102 BR-1, 102 BR-2, 102 BR-3)D
 WINNEBAGO COUNTY
 STATION 328+36.90
 STRUCTURE NO. 101-0148
 DATE: 12/15/2006
 DRAWN BY LCM
 CHECKED BY BLB