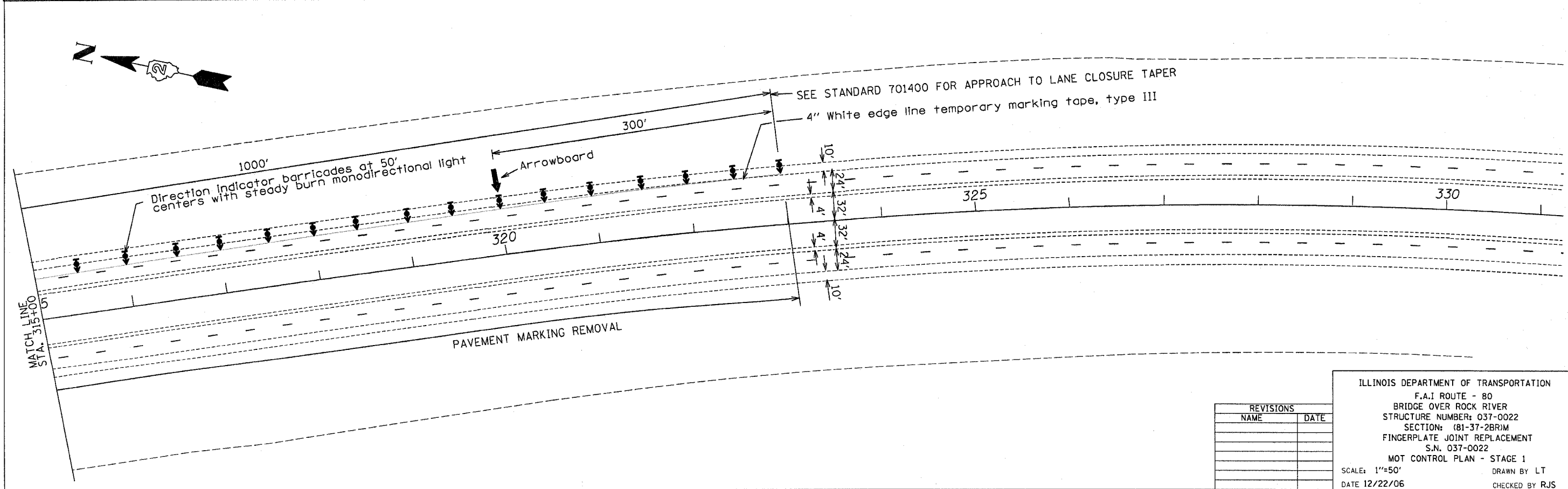
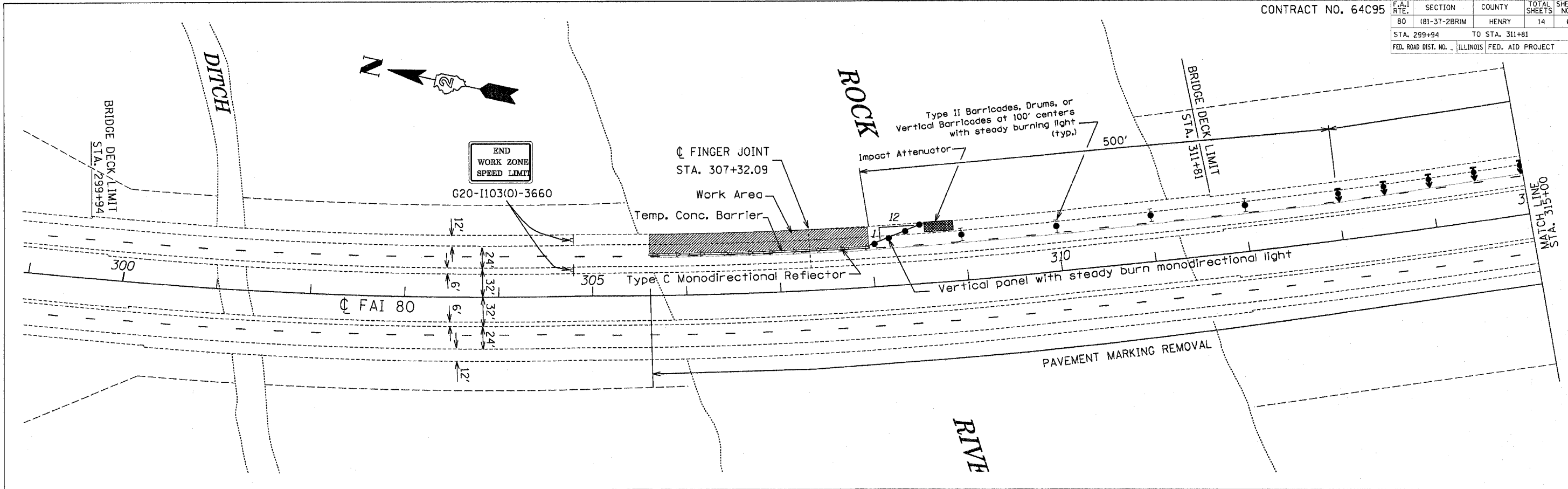


CONTRACT NO. 64C95

F.A.I. RTE.	SECTION	COUNTY	TOTAL SHEETS	SHEET NO.
80	181-37-2BRIM	HENRY	14	6
STA. 299+94		TO STA. 311+81		
FED. ROAD DIST. NO.		ILLINOIS FED. AID PROJECT		



REVISIONS	
NAME	DATE

ILLINOIS DEPARTMENT OF TRANSPORTATION  
 F.A.I. ROUTE - 80  
 BRIDGE OVER ROCK RIVER  
 STRUCTURE NUMBER: 037-0022  
 SECTION: 181-37-2BRIM  
 FINGERPLATE JOINT REPLACEMENT  
 S.N. 037-0022  
 MOT CONTROL PLAN - STAGE 1  
 SCALE: 1"=50'  
 DATE 12/22/06  
 DRAWN BY LT  
 CHECKED BY RJS

FILE: H:\Jobs2001\14014-07\CAD\Site\dgn\00\MOTS\tagel.dgn  
 DATE: 17-Oct-06 10:48