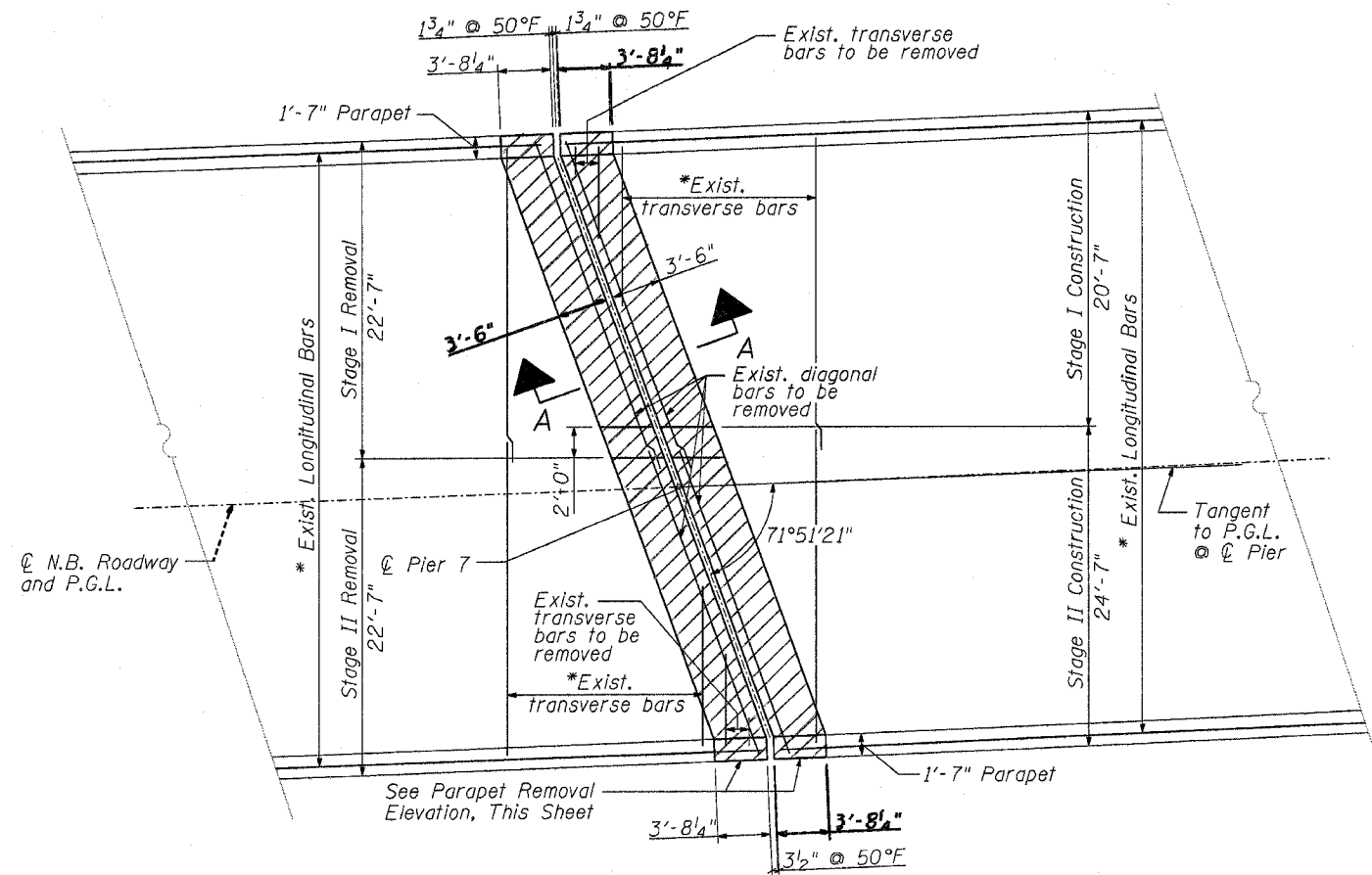
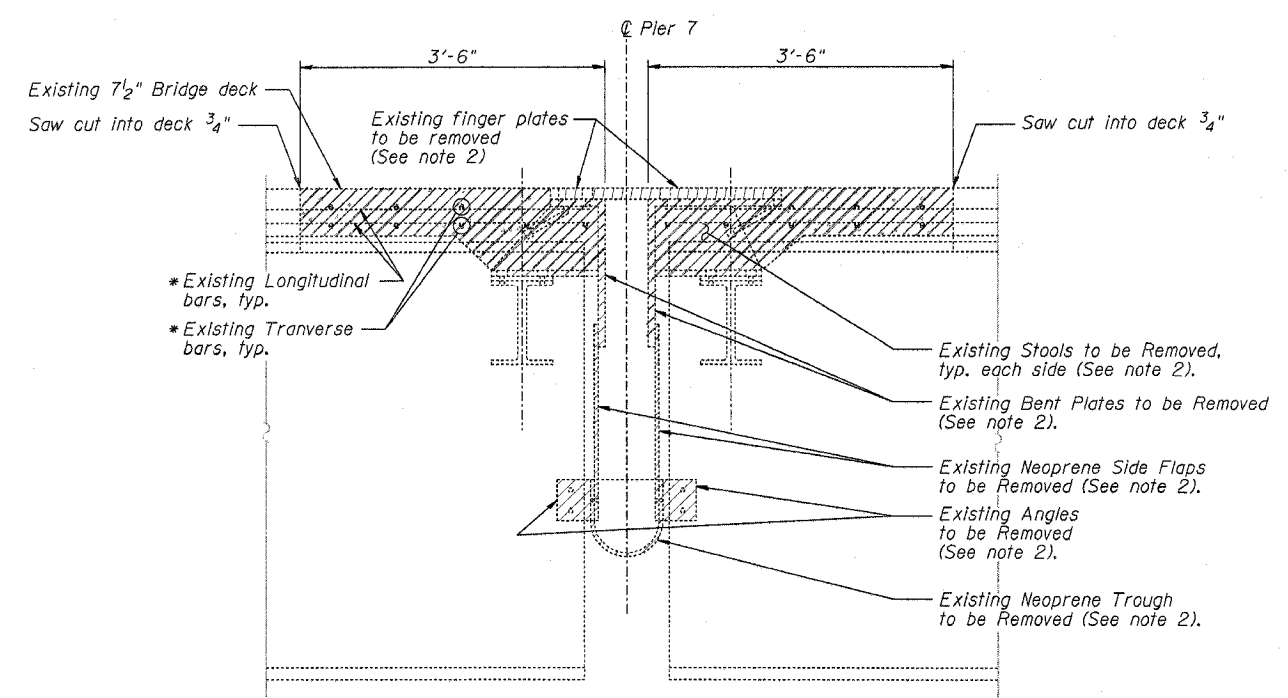


F.A.I. RTE.	SECTION	COUNTY	TOTAL SHEETS	SHEET NO.
80	(81-37-2BR)M	HENRY	14	10
STA. 299+94		TO STA. 311+81		
FED. ROAD DIST. NO.		ILLINOIS	FED. AID PROJECT	



Concrete Removal Plan



SECTION A-A

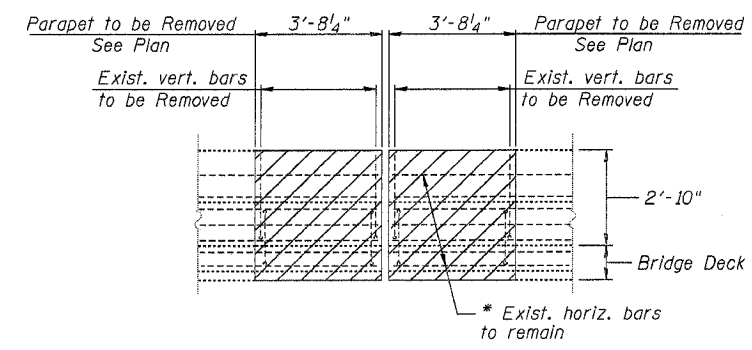
BILL OF MATERIAL

ITEM	UNIT	QUANTITY
Concrete Removal	Cu. Yd.	11.6

NOTES

- \*Existing reinforcement extending into the removal area shall be cleaned, straightened, cut to fit, and incorporated into the new construction. Any reinforcement bars that are damaged during concrete removal shall be replaced with an approved bar splicer or anchorage system. Cost shall be included with "Concrete Removal".
- Cost for Removal of existing finger & joint components shall be included with "Concrete Removal".

= Concrete Removal



PARAPET REMOVAL ELEVATION (Looking East)

L:\projects\64C95\200404-07\CAD\Structural\Drawings\Concrete Removal\Plan.dgn 06/28/06 PM

REVISIONS	
NAME	DATE
Rev. 1	1-09-07

ILLINOIS DEPARTMENT OF TRANSPORTATION  
 F.A.I. ROUTE - 80  
 BRIDGE OVER ROCK RIVER  
 SECTION: (81-37-2BR)M  
 FINGERPLATE JOINT REPLACEMENT  
 S.N. 037-0022  
 CONCRETE REMOVAL

SCALE: DATE 12/22/06  
 DRAWN BY BM  
 CHECKED BY KW