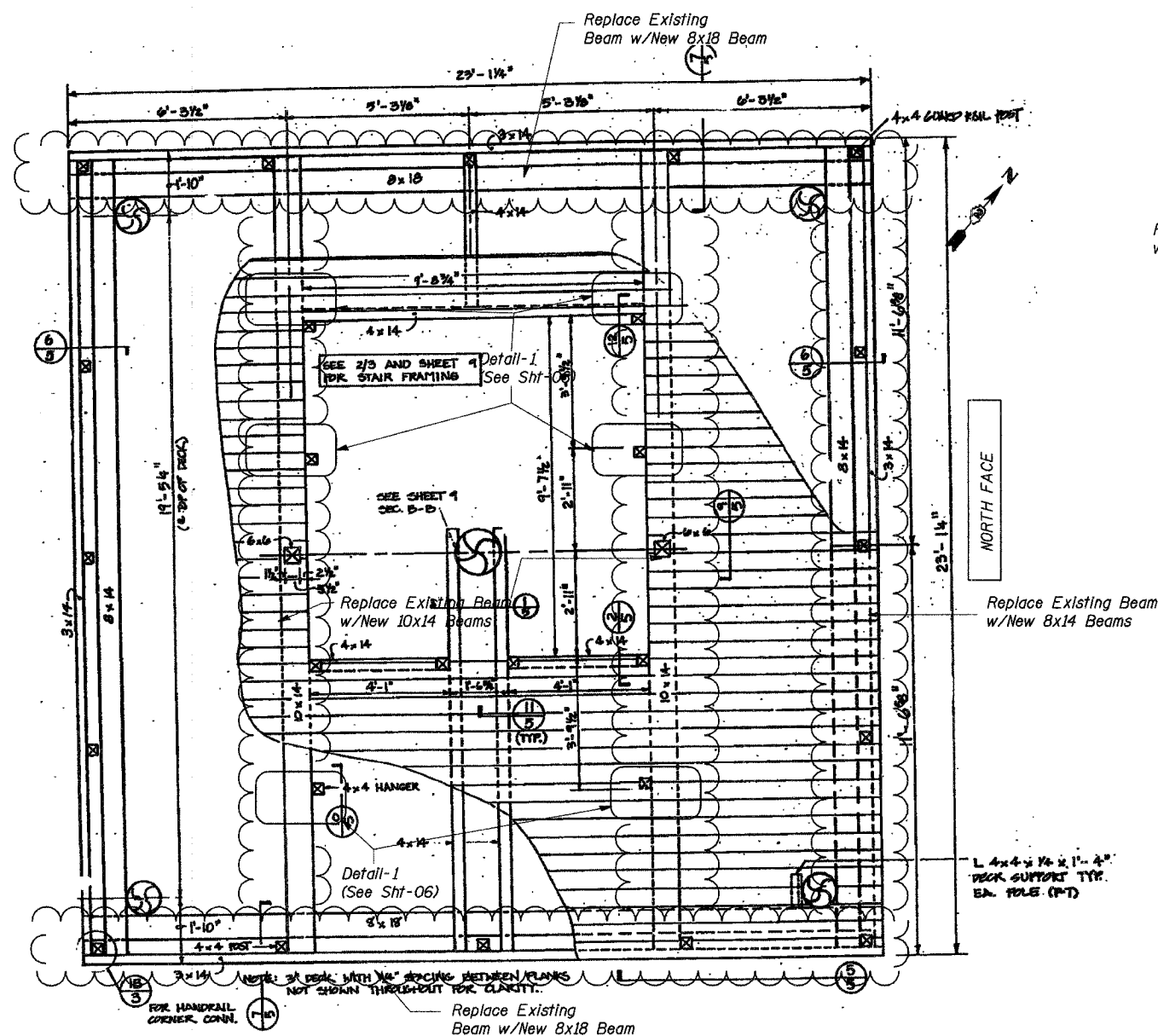


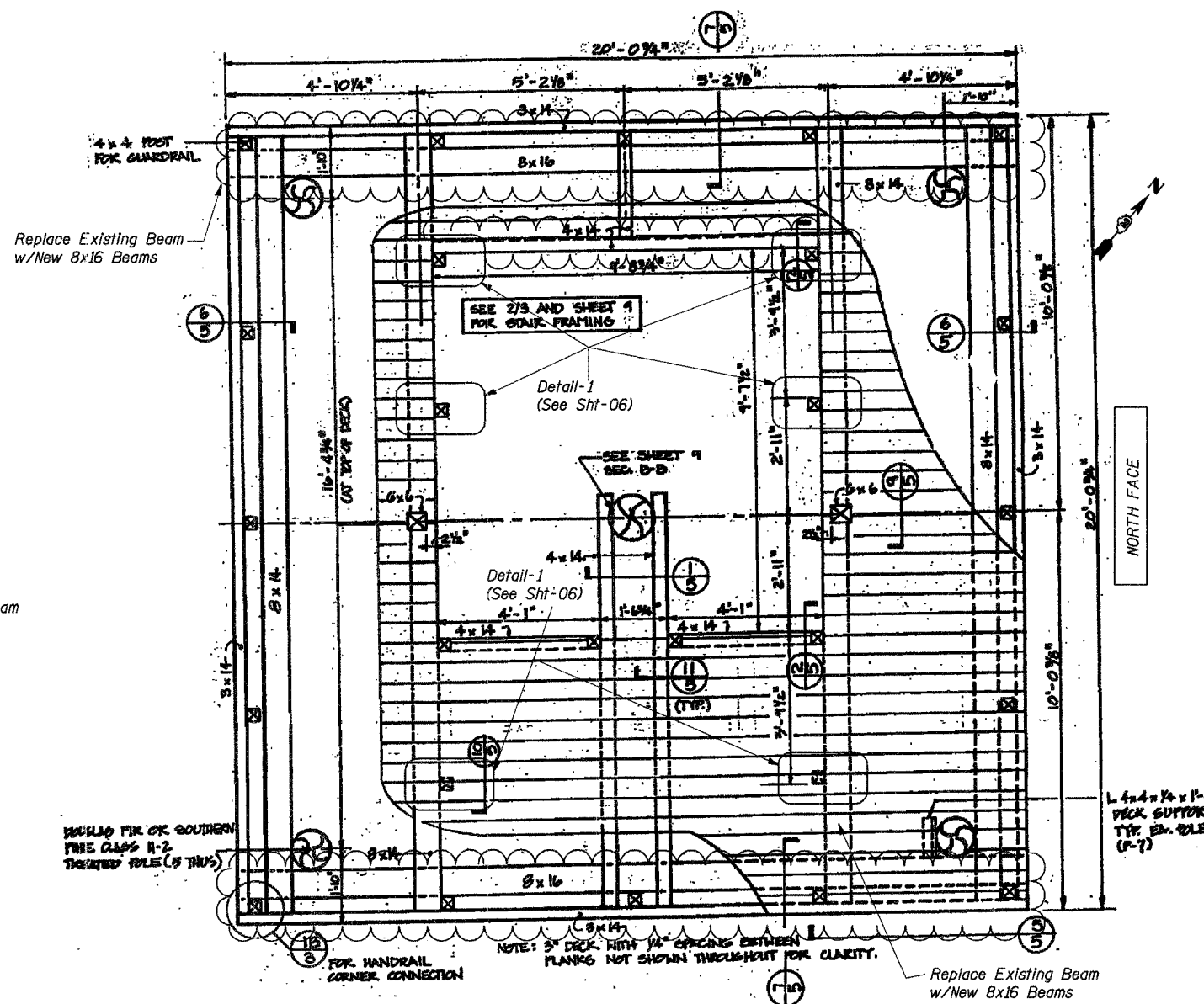
STATE OF ILLINOIS  
DEPARTMENT OF TRANSPORTATION

ROUTE NO.	SECTION	COUNTY	TOTAL SHEETS	SHEET NO.
U.S. 20	28-50-M-1	JODAVIESS COUNTY	18	04
FED. ROAD DIST. NO. 7 ILLINOIS FED. AID PROJECT-				
CONTRACT # 64C98				

SHEET NO. 04  
18 SHEETS



EXISTING FIRST LEVEL PLATFORM FRAMING PLAN



EXISTING SECOND LEVEL PLATFORM FRAMING PLAN

DESIGNED	I.L.
CHECKED	H.T.
DRAWN	R.A.
CHECKED	H.T./M.R.

PLATFORM FRAMING PLAN & REPAIR DETAILS  
(1 OF 2)  
LONGHOLLOW SCENIC OVERLOOK REST AREA  
TOWER REPAIRS  
FAP RT. 301 (U.S. RT. 20), SECTION 28-50-M-1  
JODAVIESS COUNTY

SCALE: NONE DATE: DECEMBER, 2006  
**Soodan**  
Soodan & Associates, Inc.  
100 North LaSalle Street, Suite 4800  
Chicago, Illinois 60602