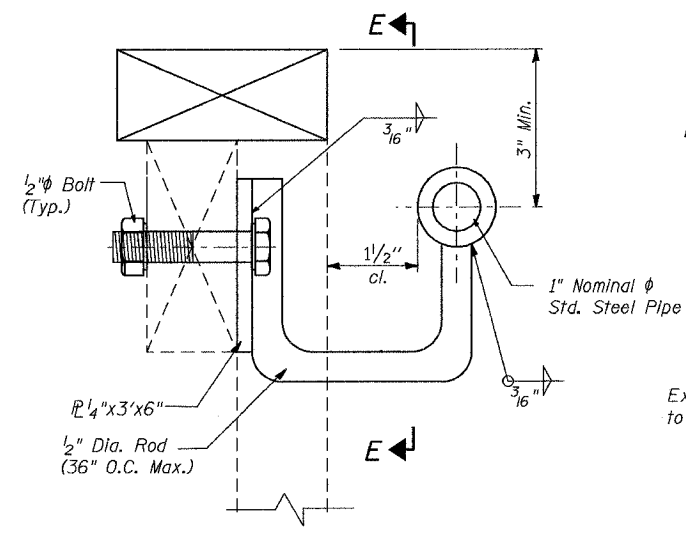


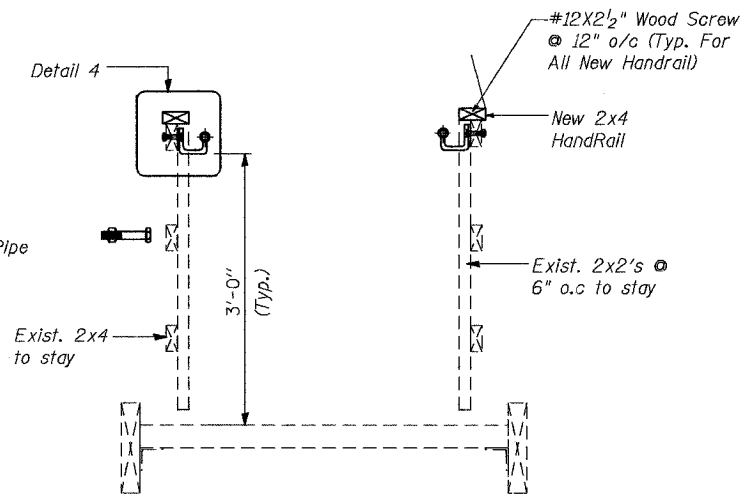
STATE OF ILLINOIS  
DEPARTMENT OF TRANSPORTATION

ROUTE NO.	SECTION	COUNTY	TOTAL SHEETS	SHEET NO.	SHEET NO. 07 18 SHEETS
U.S. 20	28-50-M-1	JODAVIESS COUNTY	18	07	
FED. ROAD DIST. NO. 7		ILLINOIS	FED. AID PROJECT -		

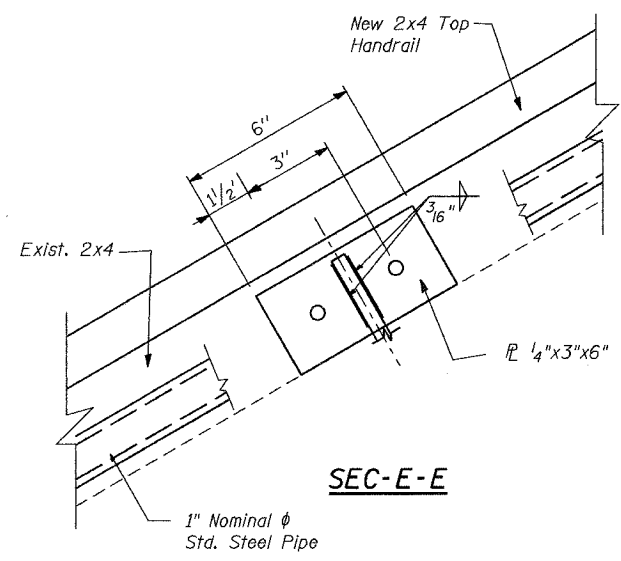
CONTRACT # 64C98



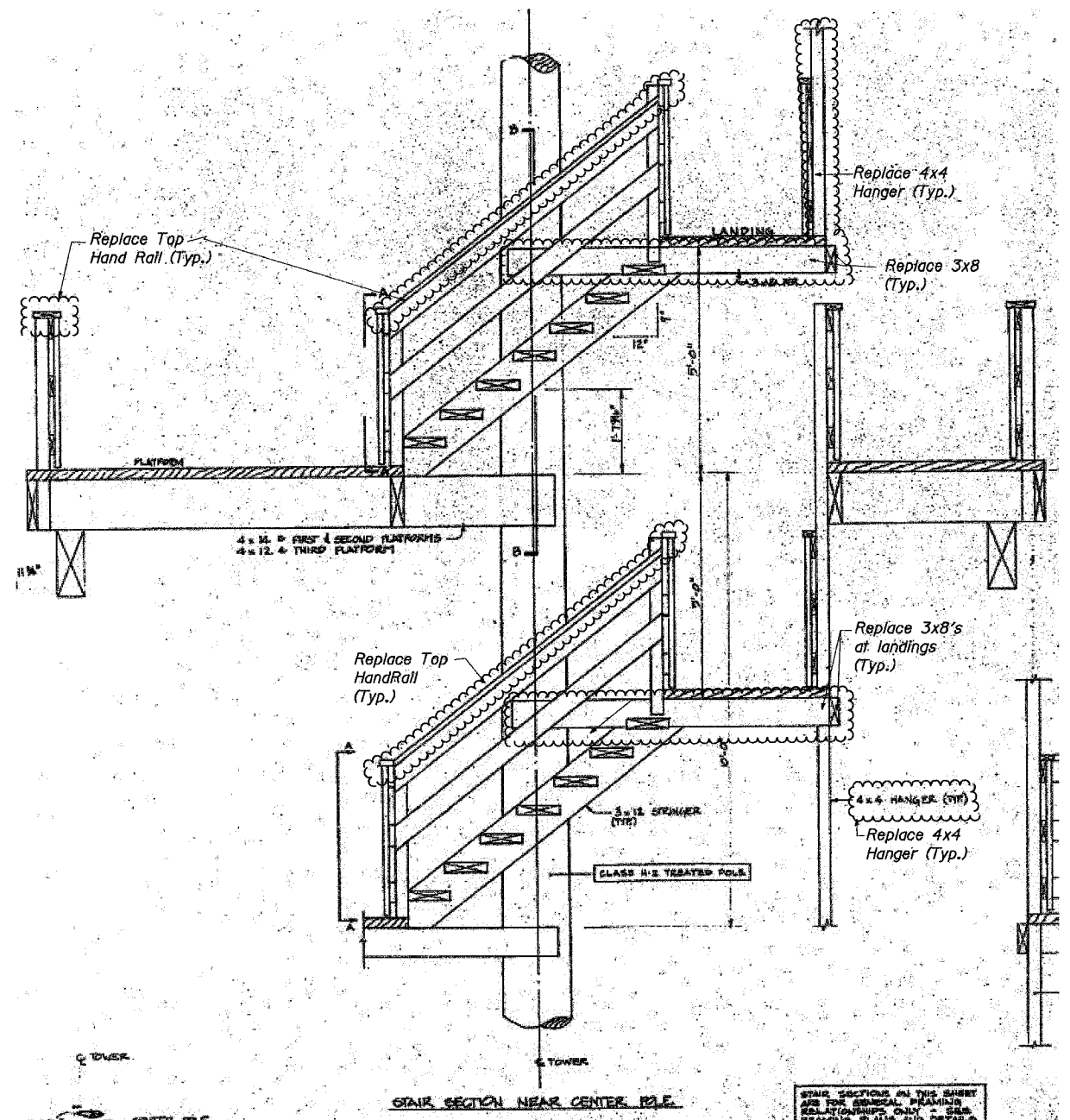
**DETAIL-4**  
(Typ. Hand Rail Detail)



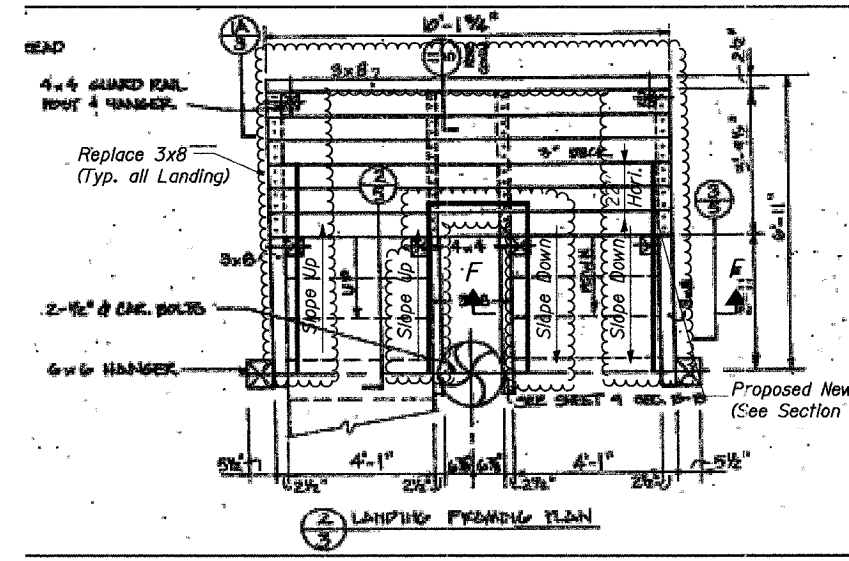
**SEC- F-F**



**SEC-E-E**



**STAIR SECTION NEAR CENTER POLE**



**LANDING FRONT VIEW**

DESIGNED	I.L.
CHECKED	H.T.
DRAWN	R.A.
CHECKED	H.T./M.R.

CONNECTION DETAILS (2 OF 2)  
LONGHOLLOW SCENIC OVERLOOK REST AREA  
TOWER REPAIRS  
FAP RT. 301 (U.S. RT. 20), SECTION 28-50-M-1  
JODAVIESS COUNTY

SCALE: NONE DATE: DECEMBER, 2006

**Soodan**  
Soodan & Associates, Inc.  
100 North LaSalle Street, Suite 1800  
Chicago, Illinois 60602