

STATE OF ILLINOIS  
DEPARTMENT OF TRANSPORTATION

ROUTE NO.	SECTION	COUNTY	TOTAL SHEETS	SHEET NO.	SHEET NO.
U.S. 20	PB-50-M-1	JODAVIESS COUNTY	18	08	18 SHEETS
FED. ROAD DIST. NO. 7	ILLINOIS	FED. AID PROJECT-	CONTRACT # 64C98		

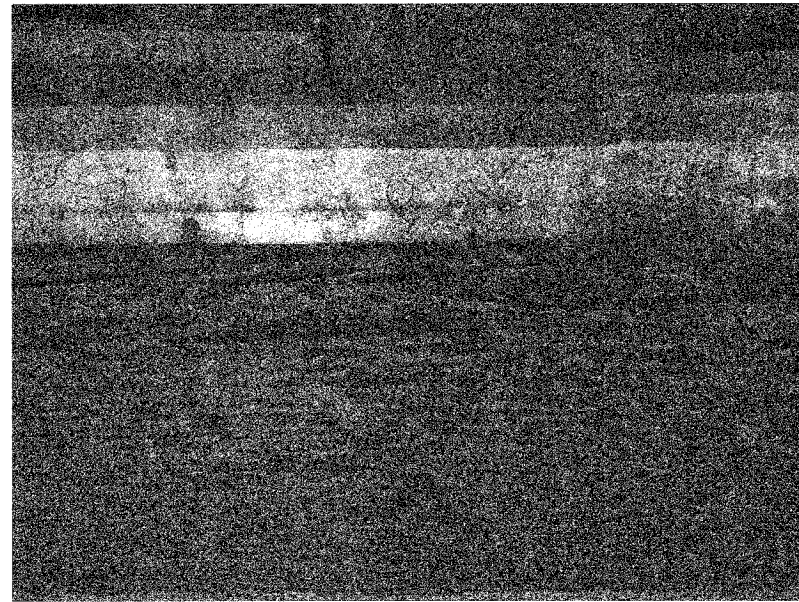


Photo 01- (Roof) Horizontal Crack in 8"x14" Main Supporting Beam

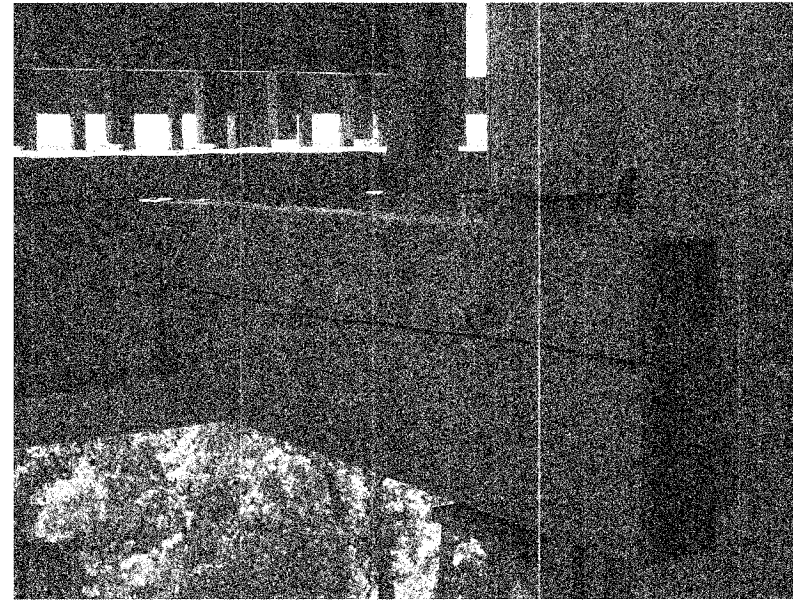


Photo 03- (Third Level) 4"x12" Beam at North of Center Pole Showing Horizontal Cracks at Mid Depth for the Full Length

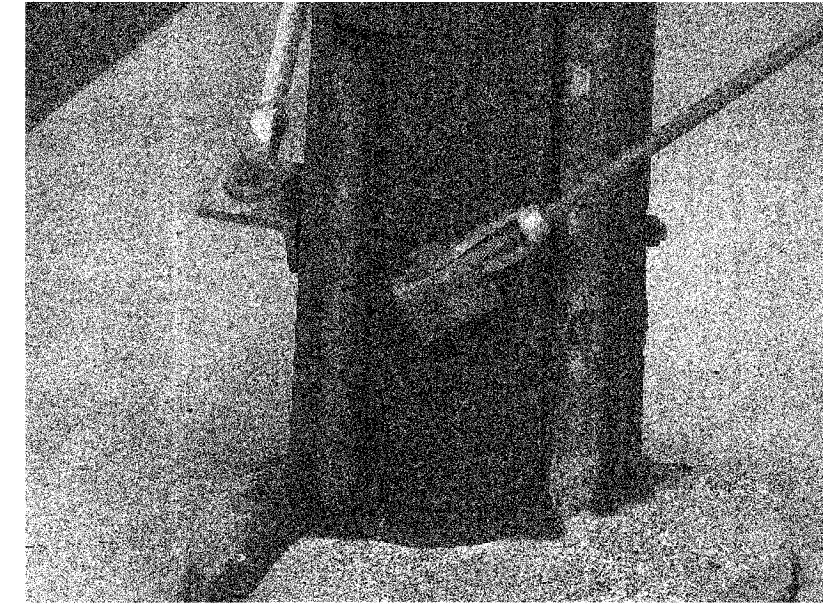


Photo 05- Wood Treatment leaching out of the Tower Structure and accumulating at Pole Base.

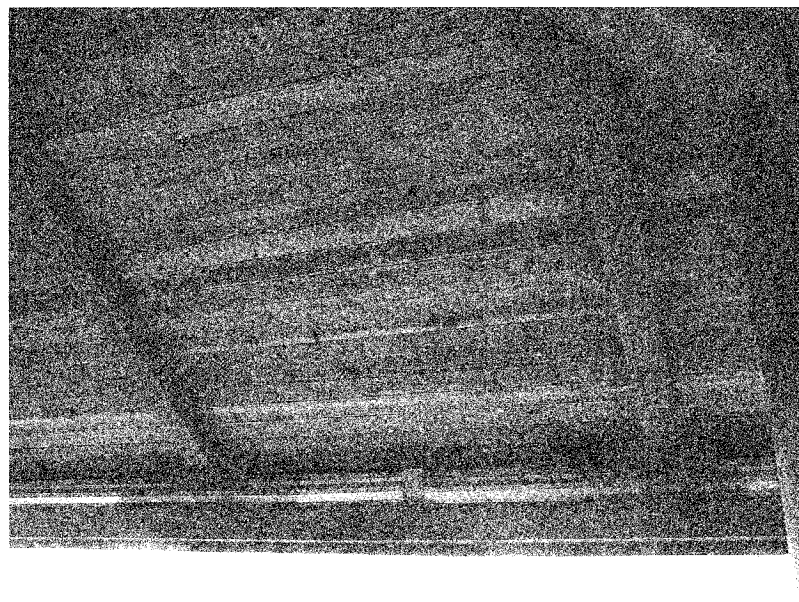


Photo 02- Underside of Roof Deck

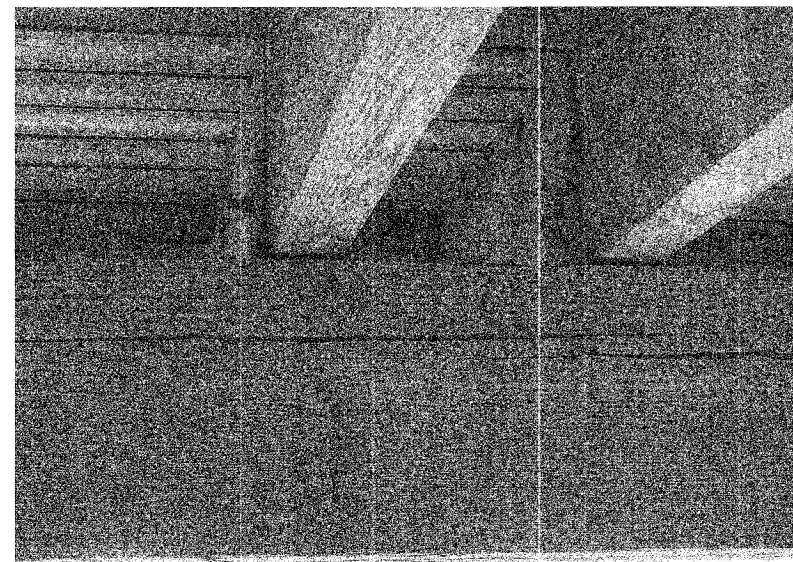


Photo 04- (Third Level) 8"x12" Beam at East and West Side showing Horizontal Cracks at Mid Depth for the Full Length

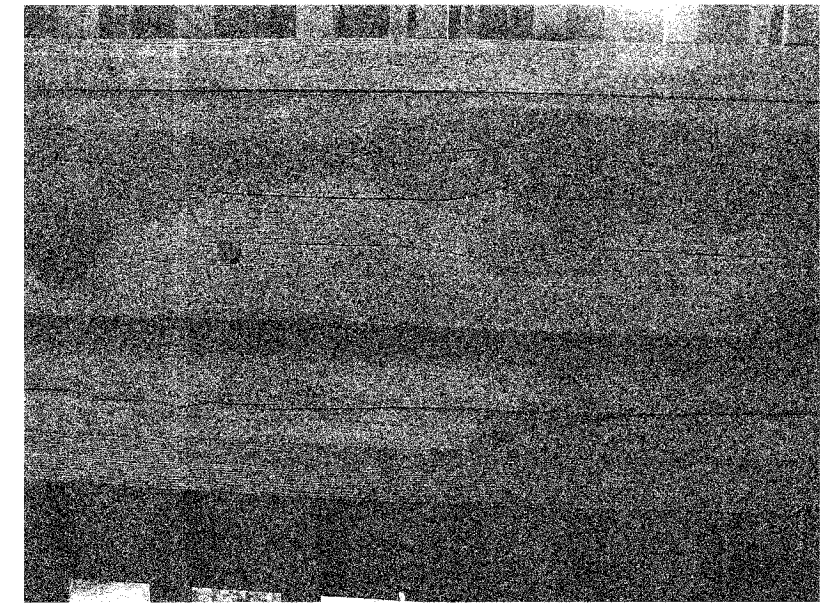


Photo 06- (Third Level) 8"x12" Beam at West side showing Horizontal Cracks at Mid Depth for the Full Length.

FOR COLOR PHOTOS WITH BETTER RESOLUTION  
CONTACT MAHMOUD ETEMALDI (815)284-5393

DESIGNED	I.L.
CHECKED	H.T.
DRAWN	R.A.
CHECKED	H.T./M.R.

PHOTOSHEET 1 OF 5

LONGHOLLOW SCENIC OVERLOOK REST AREA  
TOWER REPAIRS  
FAP RT. 301 (U.S. RT. 20), SECTION 28-SO-M-1  
JODAVIESS COUNTY

SCALE: NONE DATE: DECEMBER, 2006  
Soodan & Associates, Inc.  
100 North LaSalle Street, Suite 1800  
Chicago, Illinois 60602