

STATE OF ILLINOIS  
DEPARTMENT OF TRANSPORTATION

ROUTE NO.	SECTION	COUNTY	TOTAL SHEETS	SHEET NO.	SHEET NO. 09
U.S. 20	28-SO-M-1	JODAVIESS COUNTY	18	09	18 SHEETS
FED. ROAD DIST. NO. 7	ILLINOIS	FED. AID PROJECT	CONTRACT # 64C98		

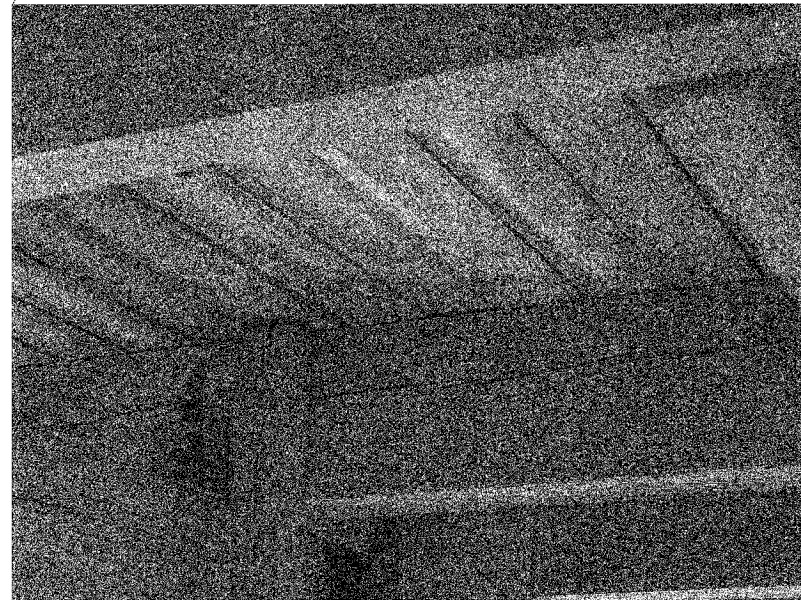


Photo 07 - (Third Level) 8"x12" Beam at South Side showing Horizontal Cracks at Mid Depth for the Full Length.



Photo 09- (Second Level) 8"x16" Beam at East Side showing Horizontal cracks at Mid Depth for the Full Length

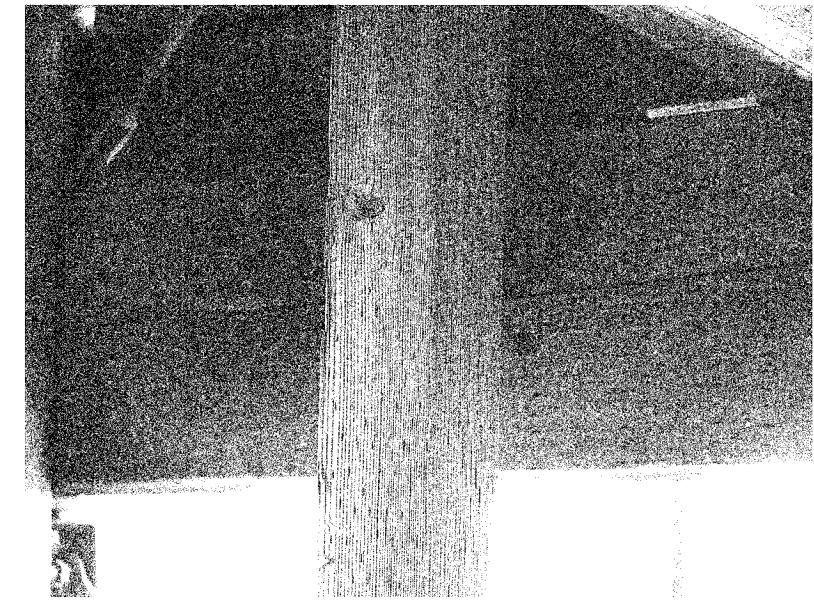


Photo 11 - (Second Level) 8" x 16" Beam at East Side Showing Horizontal Cracks at Mid Depth for the Full Length

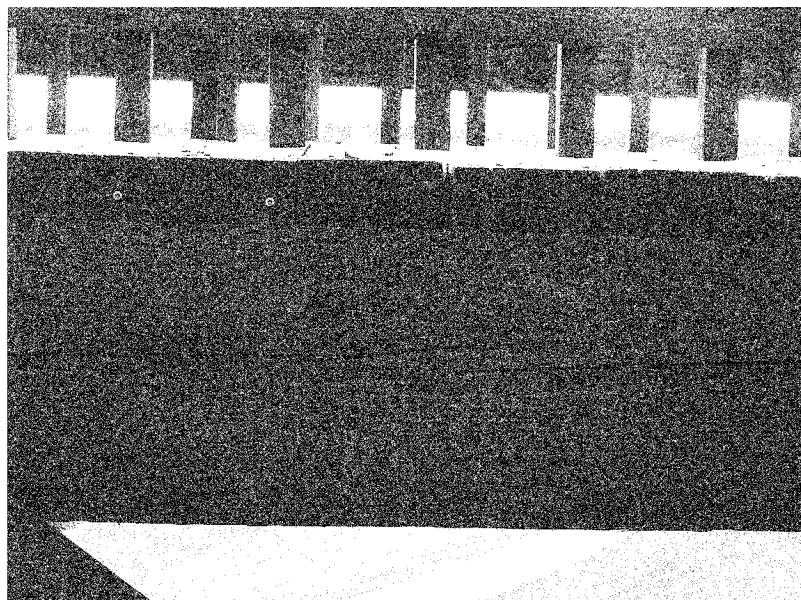


Photo 08- (Third Level) 8" x 12" Beam at South side Showing Horizontal Cracks at Mid Depth for the Full Length.

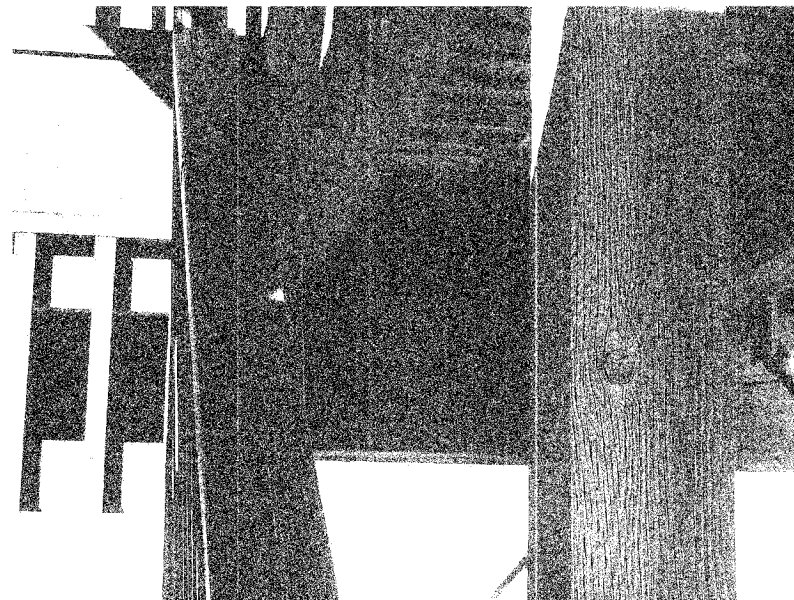


Photo 10 - (Second Level) 8"x16" Beam at East and West Side showing Horizontal Cracks at Mid Depth for the Full Length

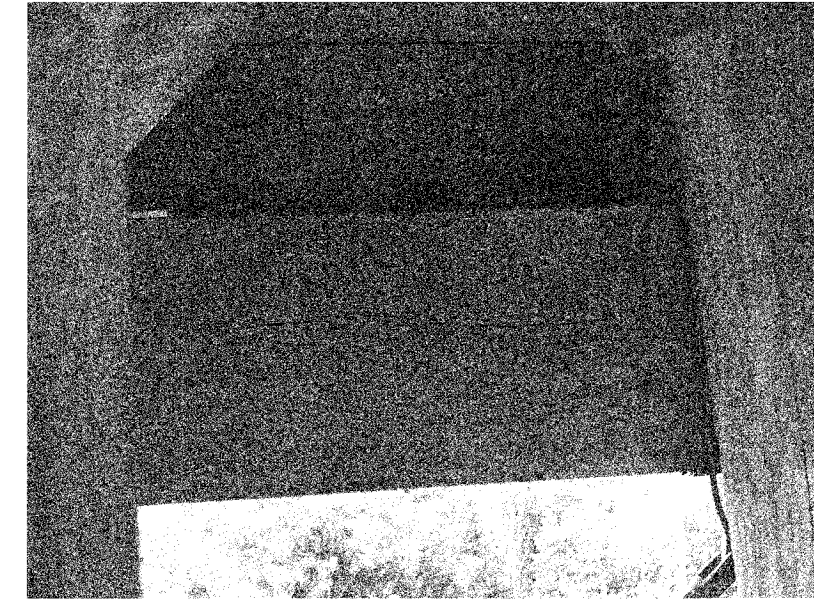


Photo 12 - (Second Level) 8"x16" Beam at West side showing Horizontal Craks at Mid Depth for the Full Length.

DESIGNED	I.L.
CHECKED	H.T.
DRAWN	R.A.
CHECKED	H.T./M.R.

FOR COLOR PHOTOS WITH BETTER RESOLUTION  
CONTACT MAHMOUD ETEMALDI (815)284-5393

PHOTOSHEET 2 OF 5

LONGHOLLOW SCENIC OVERLOOK REST AREA  
TOWER REPAIRS  
FAP RT. 301 (U.S RT. 20), SECTION 28-SO-M-1  
JODAVIESS COUNTY

SCALE: NONE DATE: DECEMBER, 2006  
Soodan & Associates, Inc.  
100 North LaSalle Street, Suite 1800  
Chicago, Illinois 60602