

STATE OF ILLINOIS  
DEPARTMENT OF TRANSPORTATION

ROUTE NO.	SECTION	COUNTY	TOTAL SHEETS	SHEET NO.	SHEET NO. 10 18 SHEETS
U.S. 20	28-50-M-1	JODAVIESS COUNTY	18	10	
FED. ROAD DIST. NO. 7	ILLINOIS	FED. AID PROJECT-	CONTRACT # 64C98		

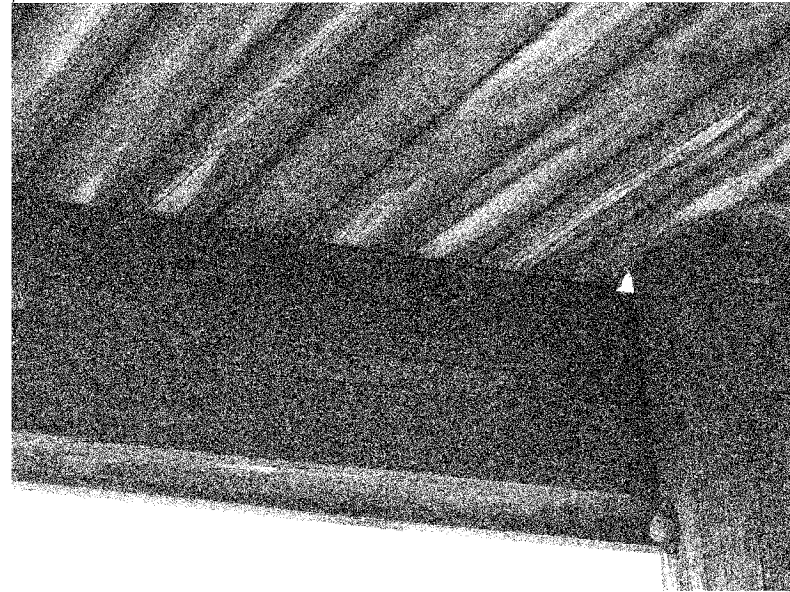


Photo 13 - (First Level) 8"x14" Edge Beam at North Side showing Horizontal Cracks at Mid Depth for the Full Length.

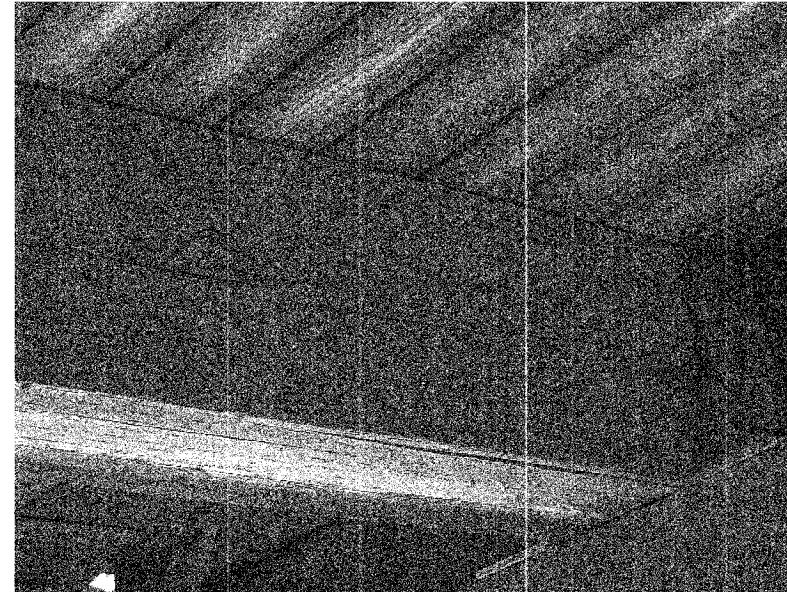


Photo 15 - (First Level) 10"x14" Intermediate Floor Beam at North Interior edges showing Horizontal cracks at Mid Depth for the Full Length



Photo 17 - Loose Railing End Posts (Typical)

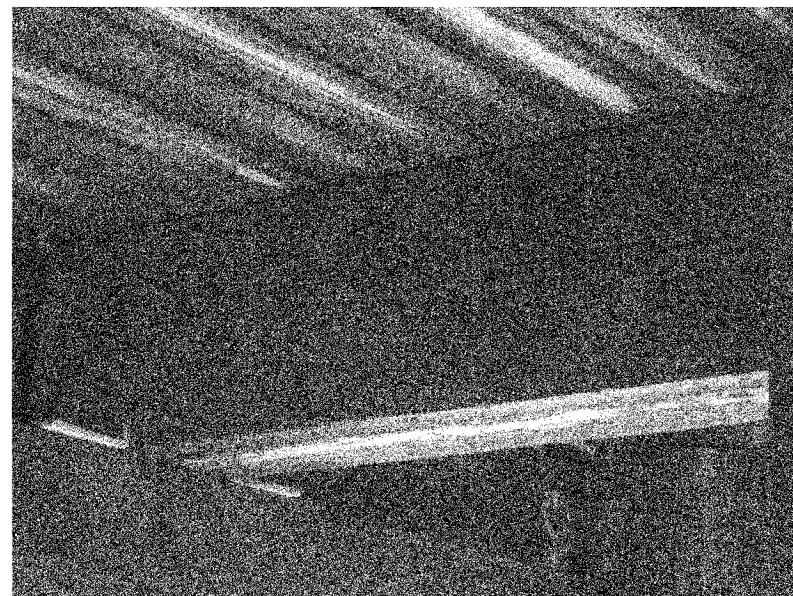


Photo 14 - (First Level) 10" x 14" Intermediate Floor Beam at South Interior edges of landing showing Horizontal cracks at Mid Depth for the Full Length.

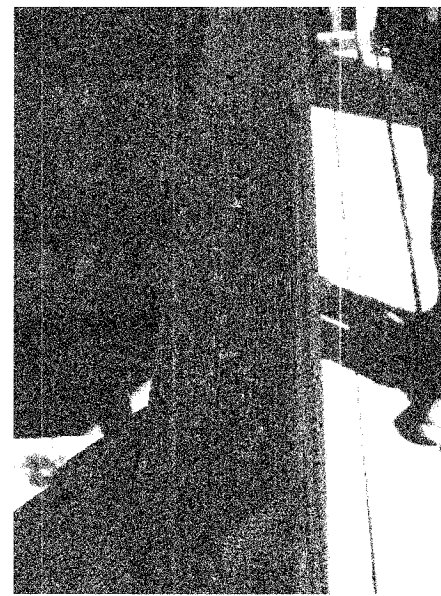


Photo 16 - Railing Showing very Rough surface and Loose Splinters



Photo 18 - Split Hanger at Top Support (Typical)

DESIGNED	I.L.
CHECKED	H.T.
DRAWN	R.A.
CHECKED	H.T./M.R.

FOR COLOR PHOTOS WITH BETTER RESOLUTION  
CONTACT MAHMOUD ETEMALDI (815)284-5393

PHOTOSHEET 3 OF 5

LONGHOLLOW SCENIC OVERLOOK REST AREA  
TOWER REPAIRS  
FAP RT. 301 (U.S. RT. 20), SECTION 28-50-M-1  
JODAVIESS COUNTY

SCALE: NONE DATE: DECEMBER, 2006  
Soodan  
Soodan & Associates, Inc.  
100 North LaSalle Street, Suite 1800  
Chicago, Illinois 60602