

STATE OF ILLINOIS  
DEPARTMENT OF TRANSPORTATION

| ROUTE NO.             | SECTION  | COUNTY            | TOTAL SHEETS     | SHEET NO. | SHEET NO. 11 |
|-----------------------|----------|-------------------|------------------|-----------|--------------|
| U.S. 20               | 28 SO-M  | JODAVIESS COUNTY  | 18               | 11        | 18 SHEETS    |
| FED. ROAD DIST. NO. 7 | ILLINOIS | FED. AID PROJECT- | CONTRACT # 64C98 |           |              |

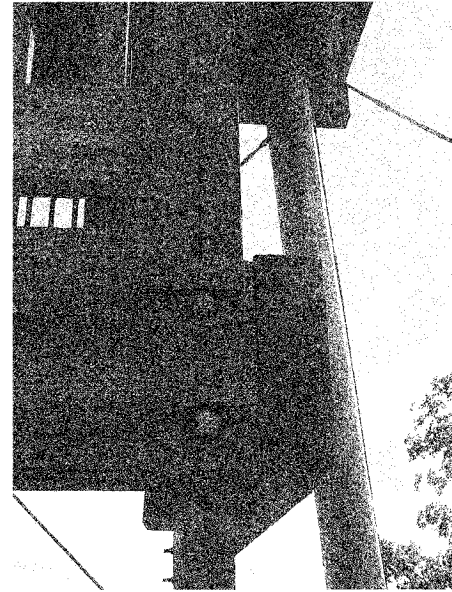


Photo 19 - Vertical Crack at the Middle of the Hanger Section to some distance away from the Support.

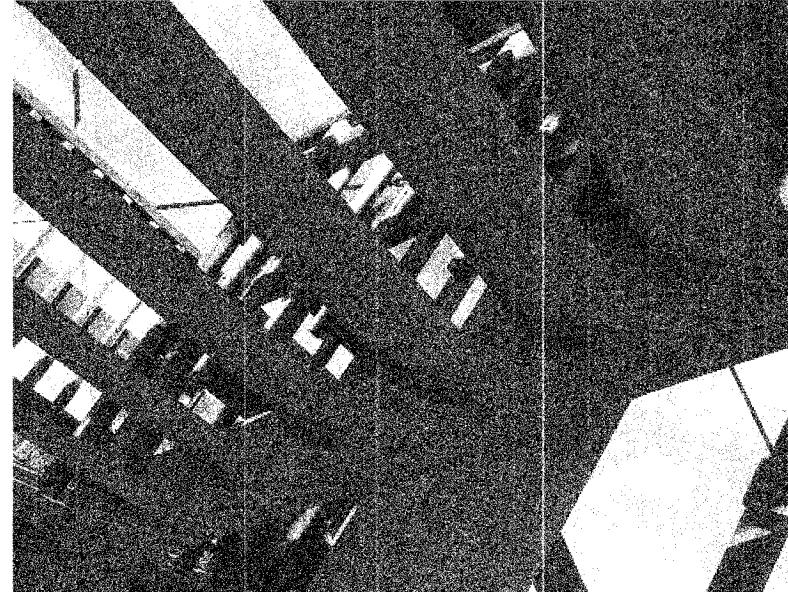


Photo 21 - Stair Stringer (Typical)

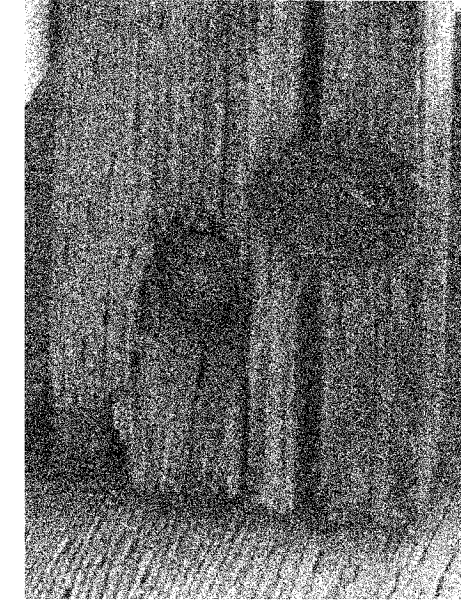


Photo 23 - Deteriorated member-to-member end connection with missing washers.

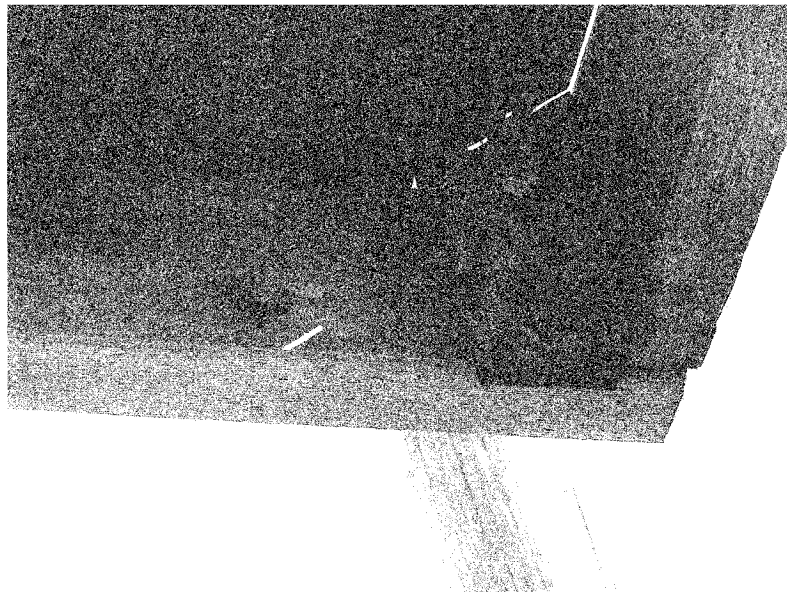


Photo 20 - Hanger Detail Connection at landing showing split wood and Rusted Washers.

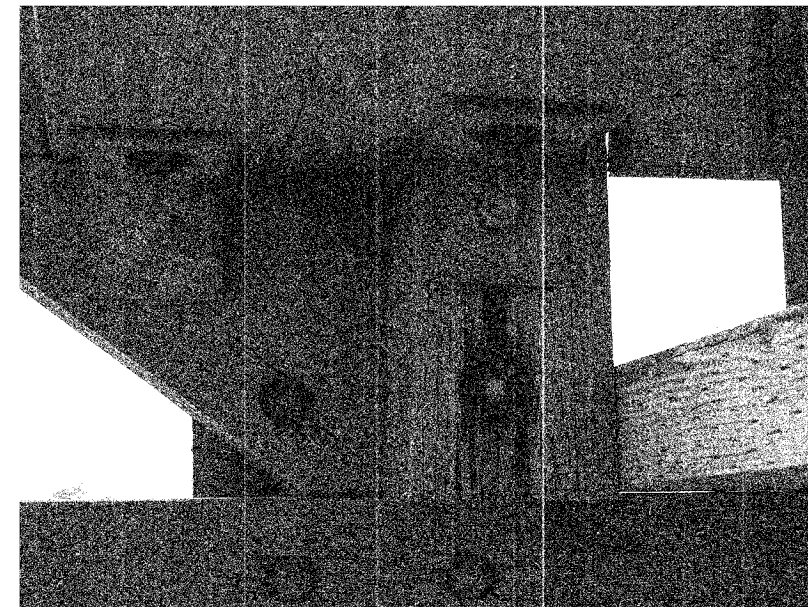


Photo 22 - Stair Railing Posts with cracks at Connection location (Typical)

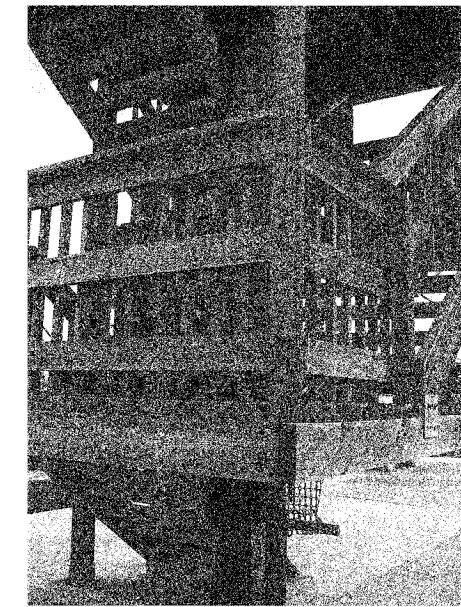


Photo 24 - Deterioration in Member-to-Member Connection with missing Washers.

FOR COLOR PHOTOS WITH BETTER RESOLUTION  
CONTACT MAHMOUD ETEMALDI (815)284-5393

|          |           |
|----------|-----------|
| DESIGNED | I.L.      |
| CHECKED  | H.T.      |
| DRAWN    | R.A.      |
| CHECKED  | H.T./M.R. |

PHOTOSHEET 4 OF 5

LONGHOLLOW SCENIC OVERLOOK REST AREA  
TOWER REPAIRS  
FAP RT. 301 (U.S. RT. 20), SECTION 28-SO-M-1  
JODAVIESS COUNTY

SCALE: NONE DATE: DECEMBER, 2006  
Soodan & Associates, Inc.  
100 North LaSalle Street, Suite 1800  
Chicago, Illinois 60602