

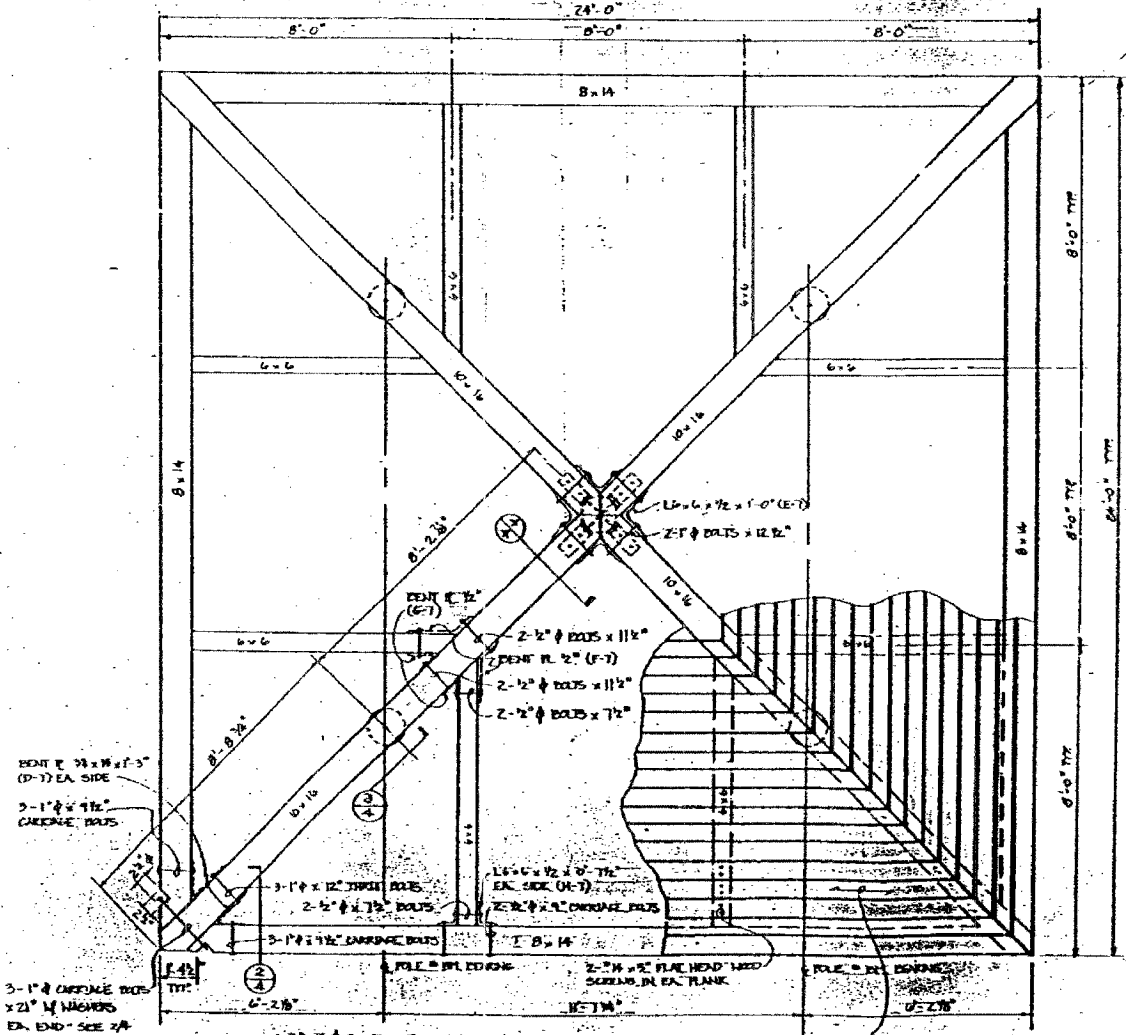
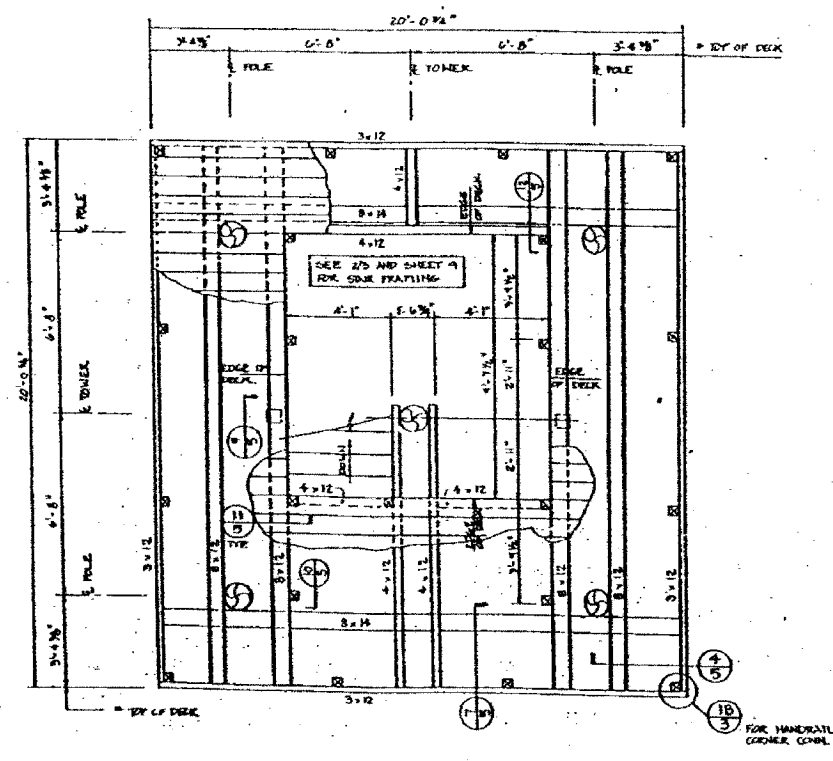
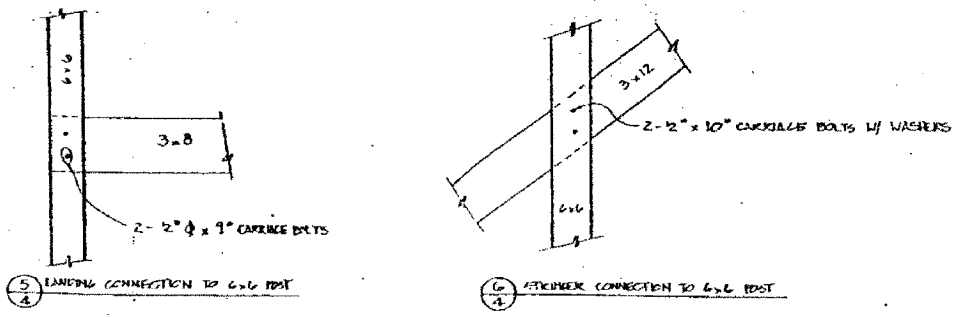
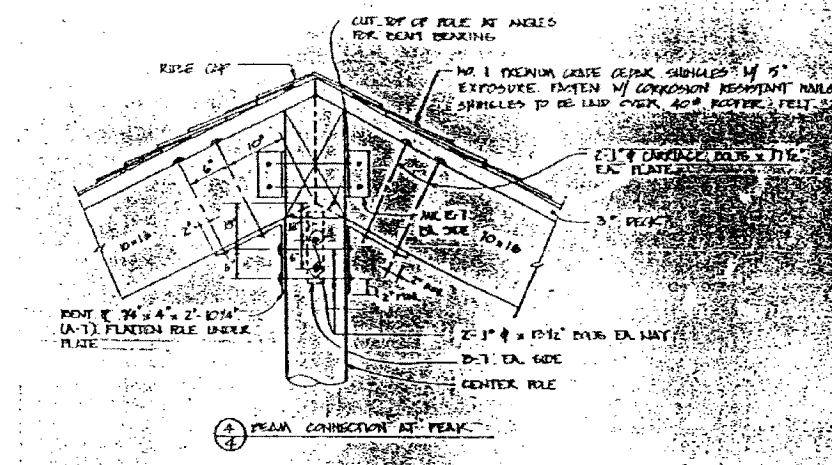
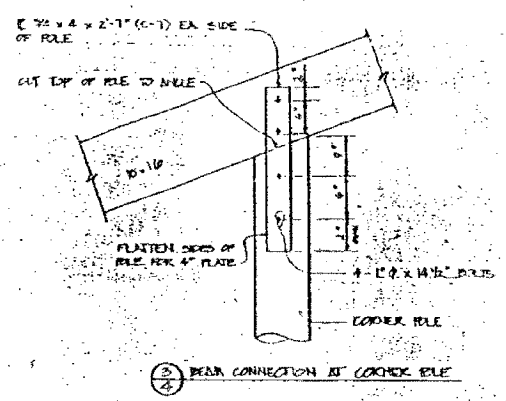
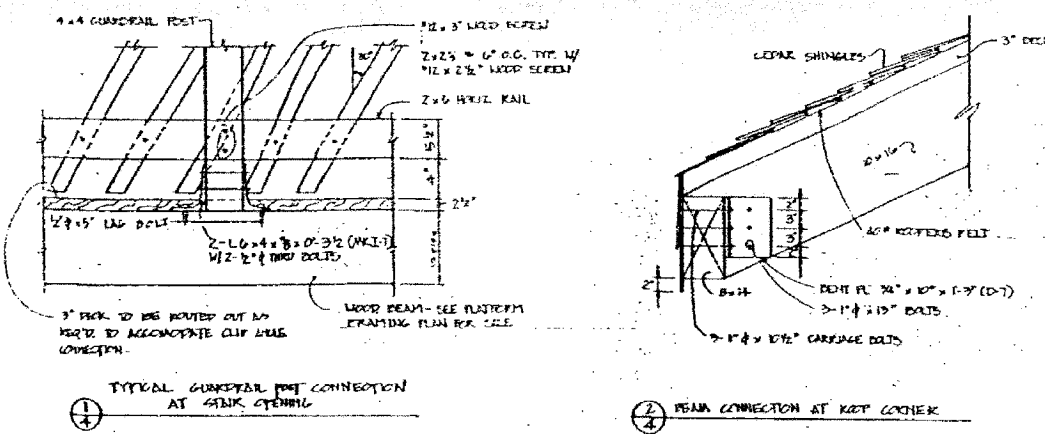
STATE OF ILLINOIS  
DEPARTMENT OF TRANSPORTATION

ROUTE NO.	SECTION	COUNTY	TOTAL SHEETS	SHEET NO.
U.S. 20	28-50-M-1	JODAVIENS COUNTY	18	15
FED. ROAD DIST. NO. 7		ILLINOIS FED. AID PROJECT-		

SHEET NO. 15  
18 SHEETS

SHEET 18 OF 47

CONTRACT # 64C98



FRAMING PLANS & DETAILS  
LOOKOUT TOWER  
E.A. ROUTE 5  
SECTION 28 50 B TOW  
JODAVIENS COUNTY

EXISTING DRAWING  
FOR INFORMATION ONLY