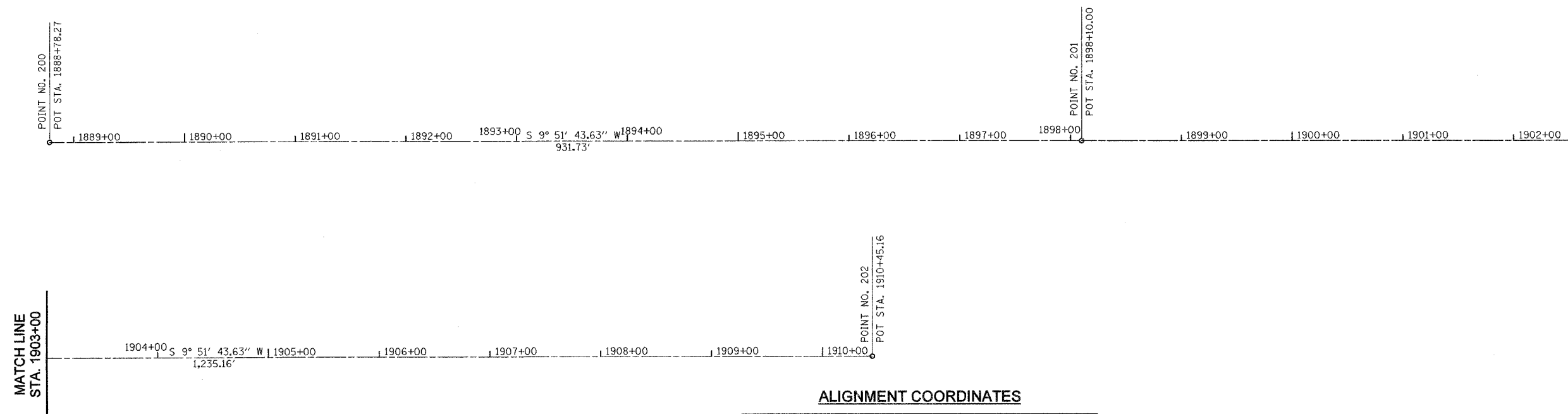


CONTRACT NO. 66411

F.A.S. RTE.	SECTION	COUNTY	TOTAL SHEETS	SHEET NO.
338	34 BR-1	IROQUOIS	37	6
STA. 1888+78.27 TO STA. 1910+45.16				
FED. ROAD DIST. NO. 3 ILLINOIS FED. AID PROJECT				
P93-038-99				
D-93-014-04				



MATCH LINE
STA. 1903+00

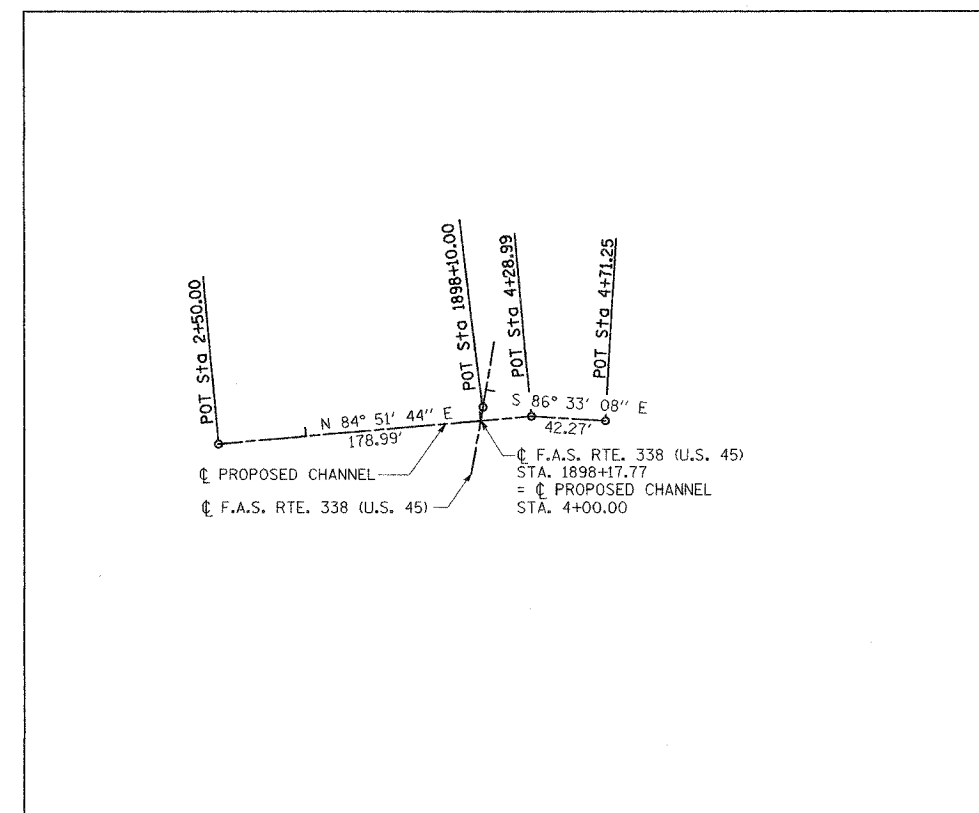
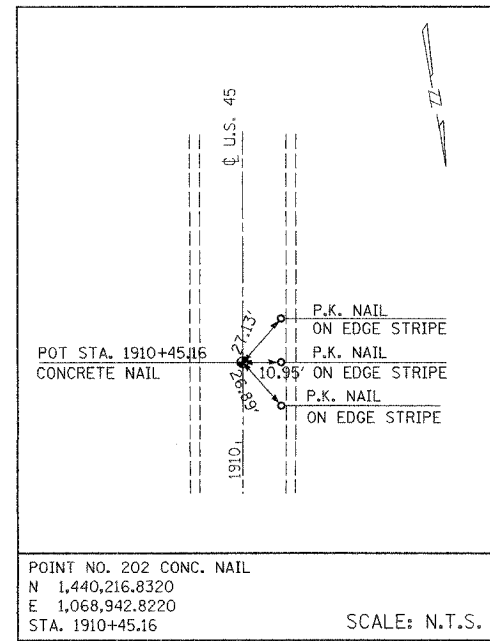
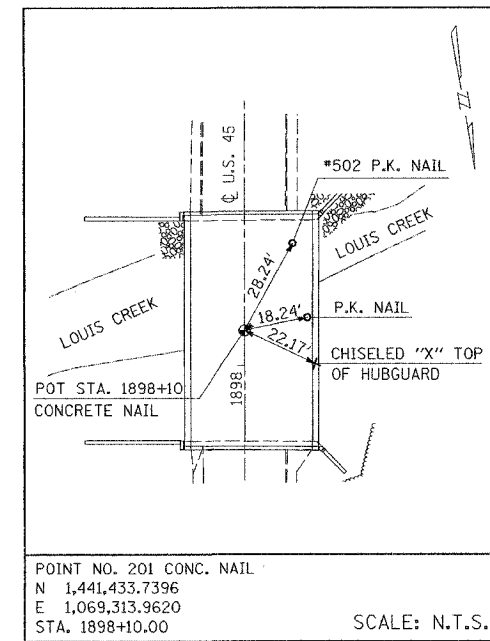
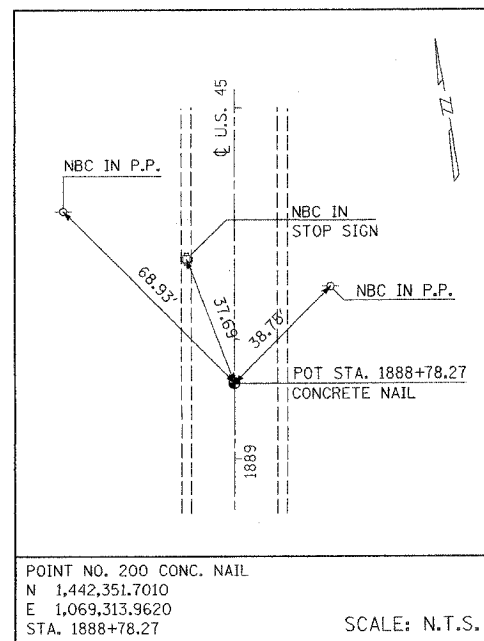


ALIGNMENT COORDINATES

POINT NO.	STATION (FEET)	NORTHING (FEET)	EASTING (FEET)
POINT 200	STA. 1888+78.27	1,442,351.7010	1,069,313.9620
POINT 201	STA. 1898+10.00	1,441,433.7396	1,069,154.3774
POINT 202	STA. 1910+45.16	1,440,216.8320	1,068,942.8220

BENCH MARKS:

- B.M. #1. RAILROAD SPIKE POWER POLE
STA. 1910+50.00, 25.00' RT.
ELEV. =677.333
- B.M. #2. CHISELED "□" SW CORNER OF SW RET. WALL
STA. 1898+42.14, 18.7' LT.
ELEV. =676.306



REVISIONS	
NAME	DATE

ILLINOIS DEPARTMENT OF TRANSPORTATION
BRIDGE REPLACEMENT OVER LOUIS CREEK
1.7 MILES NORTH OF BUCKLEY

ALIGNMENT, TIES AND BENCHMARKS

SCALE: 1"=50'
DATE: OCTOBER, 2006

DRAWN BY J.S.
CHECKED BY DR