

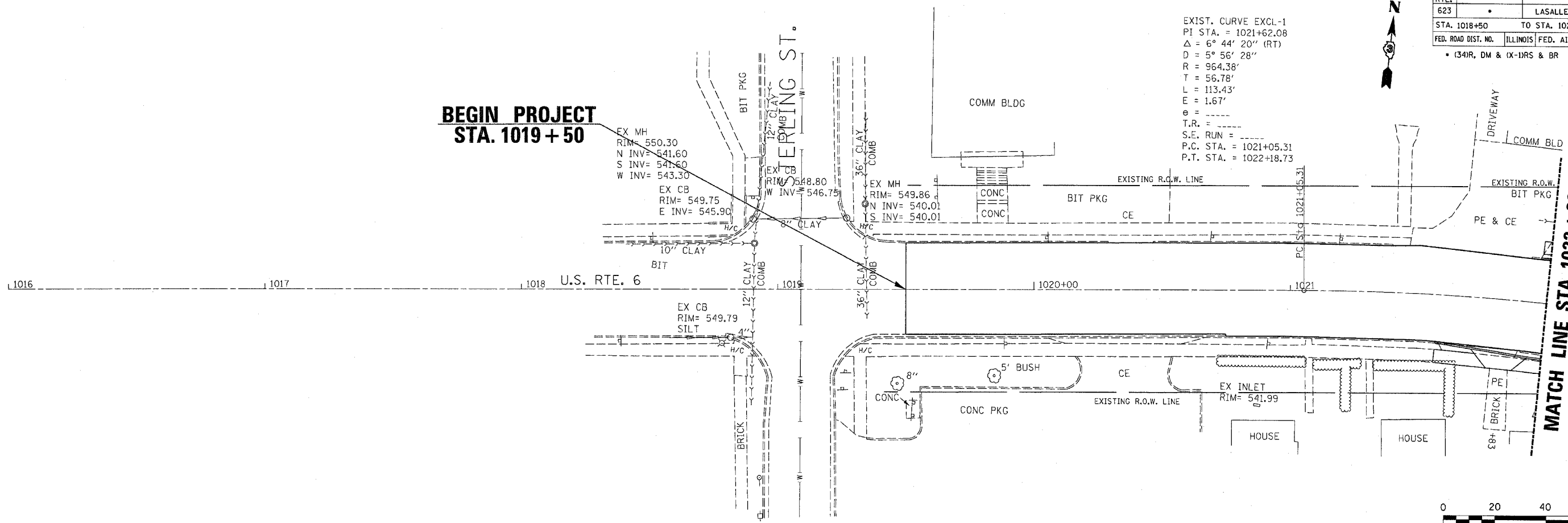
F.A.P. RTE.	SECTION	COUNTY	TOTAL SHEETS	SHEET NO.
623	*	LASALLE	126	40
STA. 1018+50		TO STA. 1022+00		
FED. ROAD DIST. NO.		ILLINOIS FED. AID PROJECT		
* (34)R, DM & (X-DRS & BR				

EXIST. CURVE EXCL-1
 PI STA. = 1021+62.08
 $\Delta = 6^{\circ} 44' 20''$ (RT)
 $D = 5^{\circ} 56' 28''$
 $R = 964.38'$
 $T = 56.78'$
 $L = 113.43'$
 $E = 1.67'$
 $e =$
 $T.R. =$
 $S.E. RUN =$
 $P.C. STA. = 1021+05.31$
 $P.T. STA. = 1022+18.73$

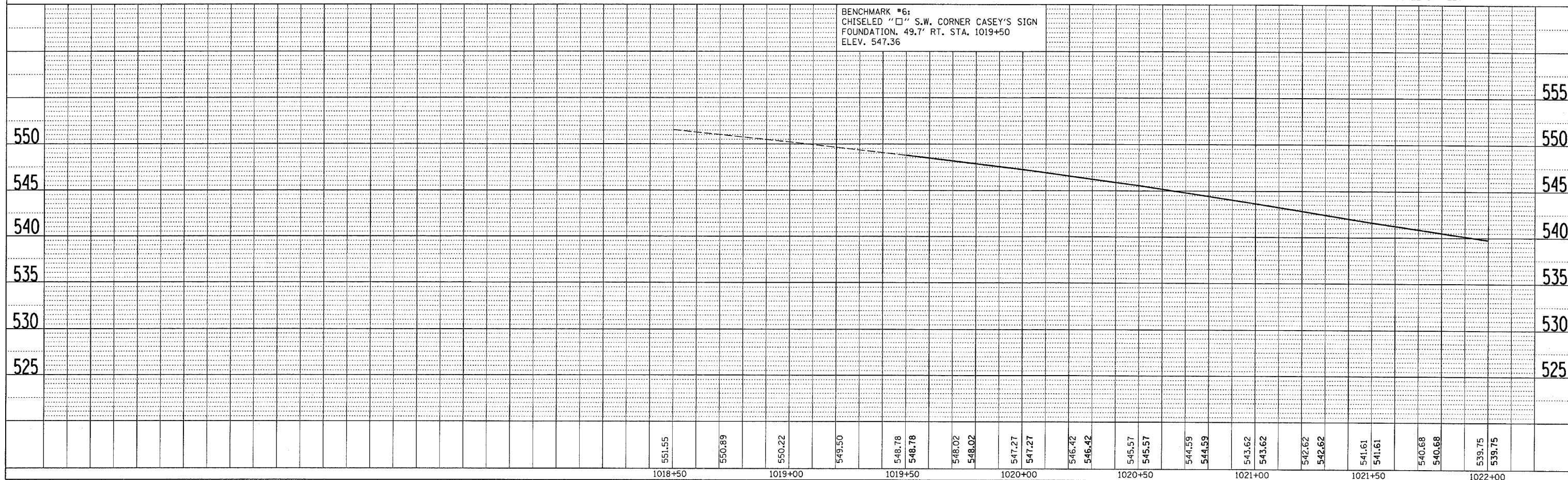


**BEGIN PROJECT
 STA. 1019+50**

MATCH LINE STA. 1022+00



BENCHMARK #6:
 CHISELED "□" S.W. CORNER CASEY'S SIGN
 FOUNDATION. 49.7' RT. STA. 1019+50
 ELEV. 547.36



**STA. 1016+00 TO STA. 1022+00
 DRAINAGE PLAN & PROFILE**

PLAN

DATE	
BY	
CHECKED	
DATE	
NO.	

PROFILE

DATE	
BY	
CHECKED	
DATE	
NO.	

June 20, 2006
 \ep01701\consu1\p&psht.s.dcn