

F.A.P. RTE.	SECTION	COUNTY	TOTAL SHEETS	SHEET NO.
623	*	LASALLE	126	41

STA. 1022+00 TO STA. 1028+00

FED. ROAD DIST. NO. ILLINOIS FED. AID PROJECT

\* 340R, DM & (X) TRS & BR

STA. 1027+80, 30' LT MH-TA 6" DIA, T1 CL RIM ELEV = 529.85

E INV = 516.65

W INV = 516.75

S INV = 525.08

14 STORM SEWERS CLASS A, TYPE 1 - 12" = 10 FT

16 STORM SEWERS CLASS A, TYPE 2 - 54" = 86 FT

17 STORM SEWERS CLASS A, TYPE 1 - 12" = 16 FT

7 STA. 1026+88.4, 30' LT MH-TA 8" DIA, T1 CL RIM ELEV = 528.90

E INV = 517.22

W INV = 523.48

N = 519.62

S INV = 521.82

7G STA. 1026+75.9, 38.9' LT MH-TA 6" DIA, T1 CL RIM ELEV = 528.65

W INV = 523.72

N INV = 525.31

S INV = 523.57

14 STORM SEWERS CLASS A, TYPE 1 - 12" = 10 FT

16 STORM SEWERS CLASS A, TYPE 2 - 54" = 86 FT

17A STORM SEWERS CL A, TY 1 - 18" = 29 FT

17B STORM SEWERS CL A, TY 1 - 24" = 9 FT

7F STA. 1027+00, 63' LT PRC FLAR END SEC N INV = 520.20

6 STA. 1027+80, 30' LT MH-TA 6" DIA, T1 CL RIM ELEV = 529.85

E INV = 516.65

W INV = 516.75

S INV = 525.08

6A STA. 1027+80, 13.6' LT INLET TBON 3 F&G RIM ELEV = 529.09

N INV = 525.18

S INV = 525.28

6B STA. 1027+80, 13.6' LT INLET TA, T3 F&G RIM ELEV = 529.09

N INV = 525.18

S INV = 525.28

6C STA. 1027+80, 13.6' LT INLET TA, T3 F&G RIM ELEV = 529.09

N INV = 525.18

S INV = 525.28

6D STA. 1027+80, 13.6' LT INLET TA, T3 F&G RIM ELEV = 529.09

N INV = 525.18

S INV = 525.28

6E STA. 1027+80, 13.6' LT INLET TA, T3 F&G RIM ELEV = 529.09

N INV = 525.18

S INV = 525.28

6F STA. 1027+80, 13.6' LT INLET TA, T3 F&G RIM ELEV = 529.09

N INV = 525.18

S INV = 525.28

6G STA. 1027+80, 13.6' LT INLET TA, T3 F&G RIM ELEV = 529.09

N INV = 525.18

S INV = 525.28

6H STA. 1027+80, 13.6' LT INLET TA, T3 F&G RIM ELEV = 529.09

N INV = 525.18

S INV = 525.28

6I STA. 1027+80, 13.6' LT INLET TA, T3 F&G RIM ELEV = 529.09

N INV = 525.18

S INV = 525.28

6J STA. 1027+80, 13.6' LT INLET TA, T3 F&G RIM ELEV = 529.09

N INV = 525.18

S INV = 525.28

6K STA. 1027+80, 13.6' LT INLET TA, T3 F&G RIM ELEV = 529.09

N INV = 525.18

S INV = 525.28

6L STA. 1027+80, 13.6' LT INLET TA, T3 F&G RIM ELEV = 529.09

N INV = 525.18

S INV = 525.28

6M STA. 1027+80, 13.6' LT INLET TA, T3 F&G RIM ELEV = 529.09

N INV = 525.18

S INV = 525.28

6N STA. 1027+80, 13.6' LT INLET TA, T3 F&G RIM ELEV = 529.09

N INV = 525.18

S INV = 525.28

6O STA. 1027+80, 13.6' LT INLET TA, T3 F&G RIM ELEV = 529.09

N INV = 525.18

S INV = 525.28

6P STA. 1027+80, 13.6' LT INLET TA, T3 F&G RIM ELEV = 529.09

N INV = 525.18

S INV = 525.28

6Q STA. 1027+80, 13.6' LT INLET TA, T3 F&G RIM ELEV = 529.09

N INV = 525.18

S INV = 525.28

6R STA. 1027+80, 13.6' LT INLET TA, T3 F&G RIM ELEV = 529.09

N INV = 525.18

S INV = 525.28

6S STA. 1027+80, 13.6' LT INLET TA, T3 F&G RIM ELEV = 529.09

N INV = 525.18

S INV = 525.28

6T STA. 1027+80, 13.6' LT INLET TA, T3 F&G RIM ELEV = 529.09

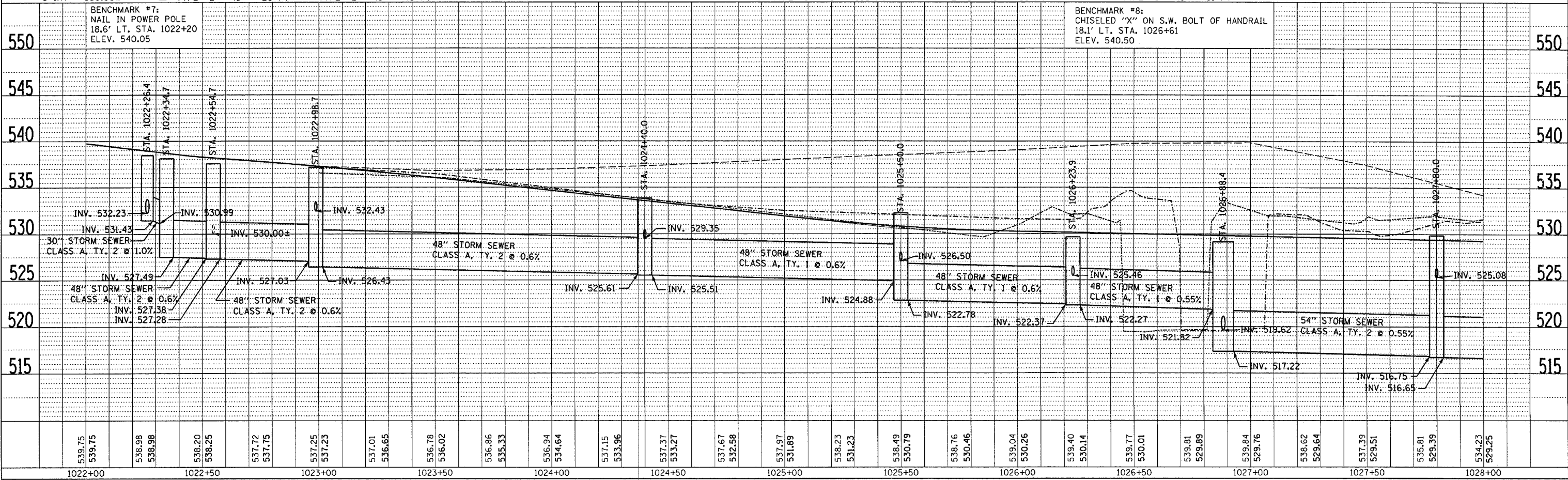
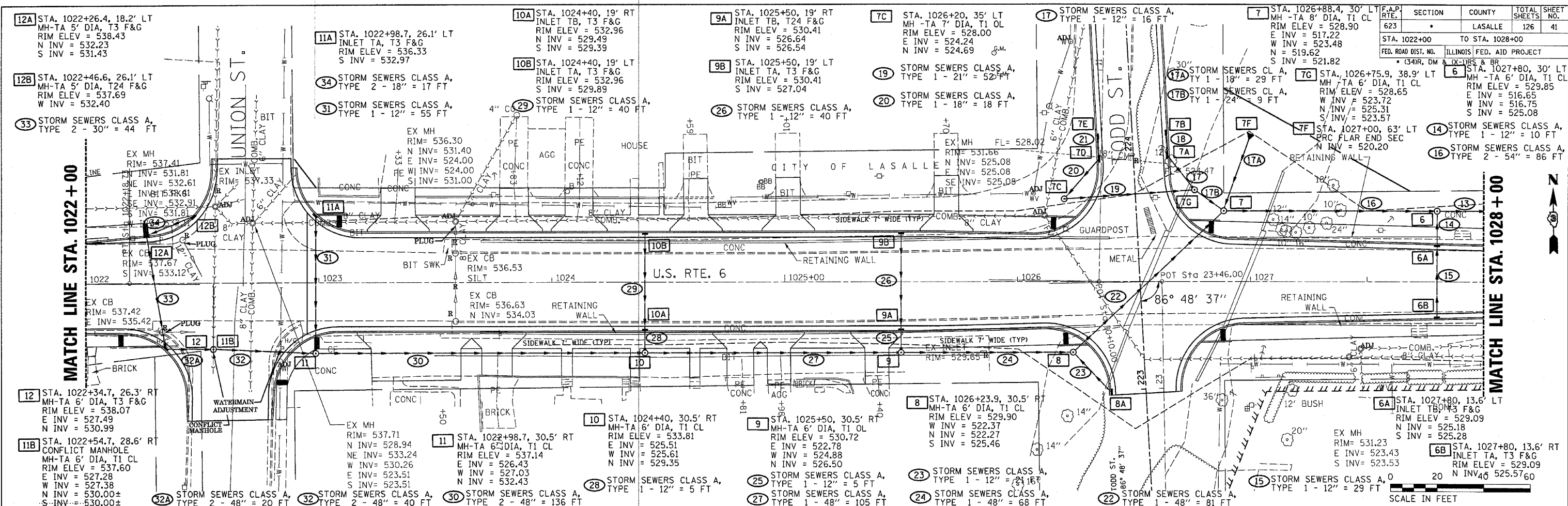
N INV = 525.18

S INV = 525.28

6U STA. 1027+80, 13.6' LT INLET TA, T3 F&G RIM ELEV = 529.09

N INV = 525.18

S INV = 525.28



STA. 1022+00 TO STA. 1028+00 DRAINAGE PLAN & PROFILE

DATE	BY	REVISION

DATE	BY	REVISION

June 20, 2006  
epc/701\consult\1\p&sh\p&sh.dcn