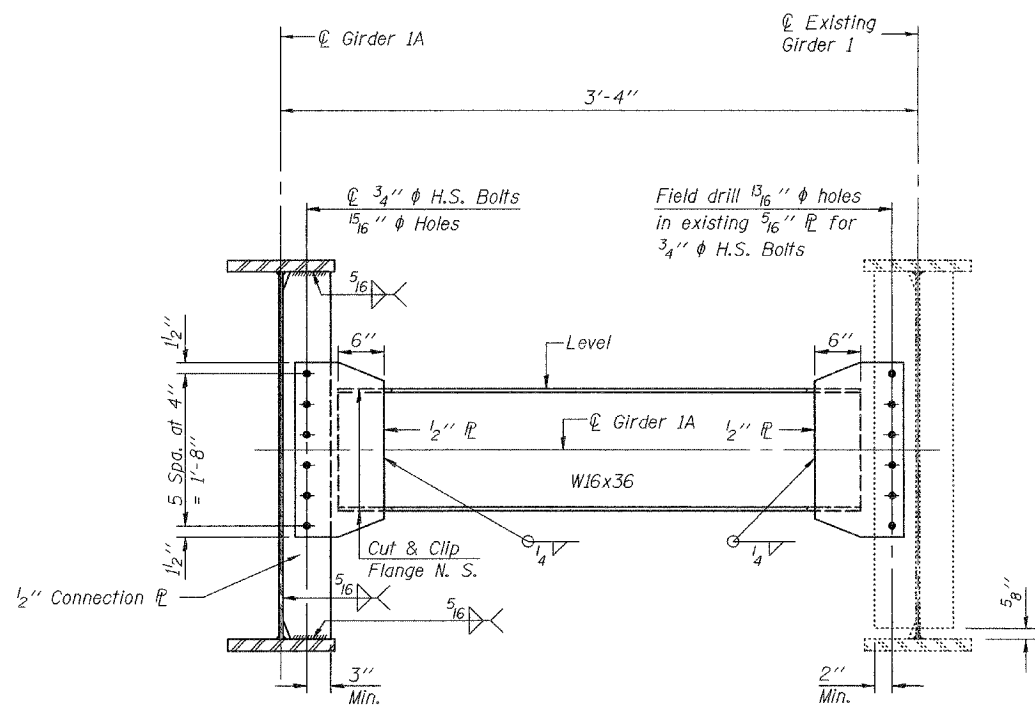


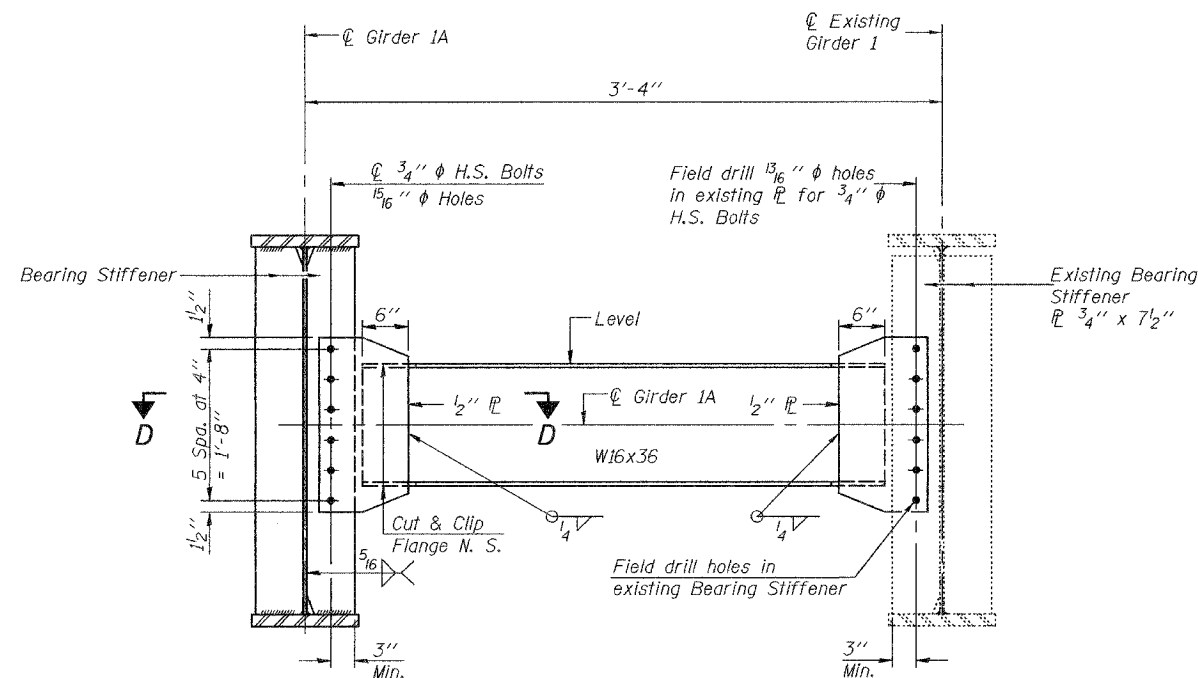
STATE OF ILLINOIS
DEPARTMENT OF TRANSPORTATION

ROUTE NO.	SECTION	COUNTY	TOTAL SHEETS	SHEET NO.	SHEET NO. 21 41 SHEETS
FAP 623	X-IBR	LaSalle	126	76	
FED. ROAD DIST. NO. 7		ILLINOIS		FED. AID PROJECT	

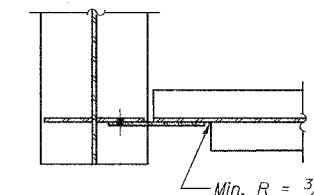
Contract #66617



INTERIOR DIAPHRAGM - D
(10-required)

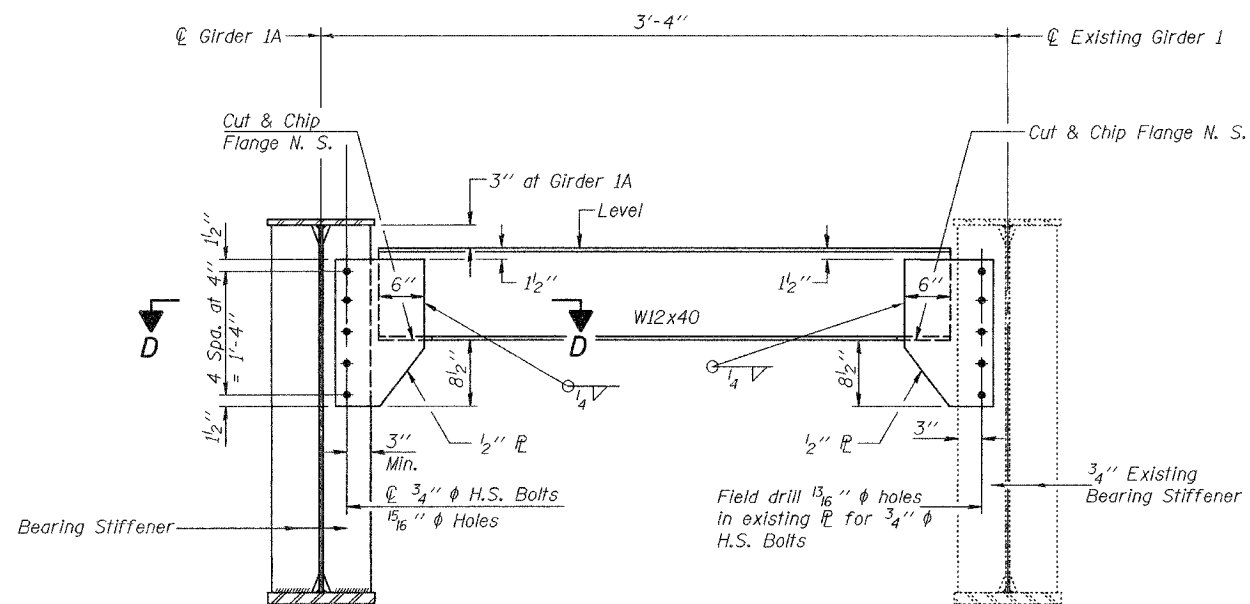


INTERIOR DIAPHRAGM - D₂
(2-required)

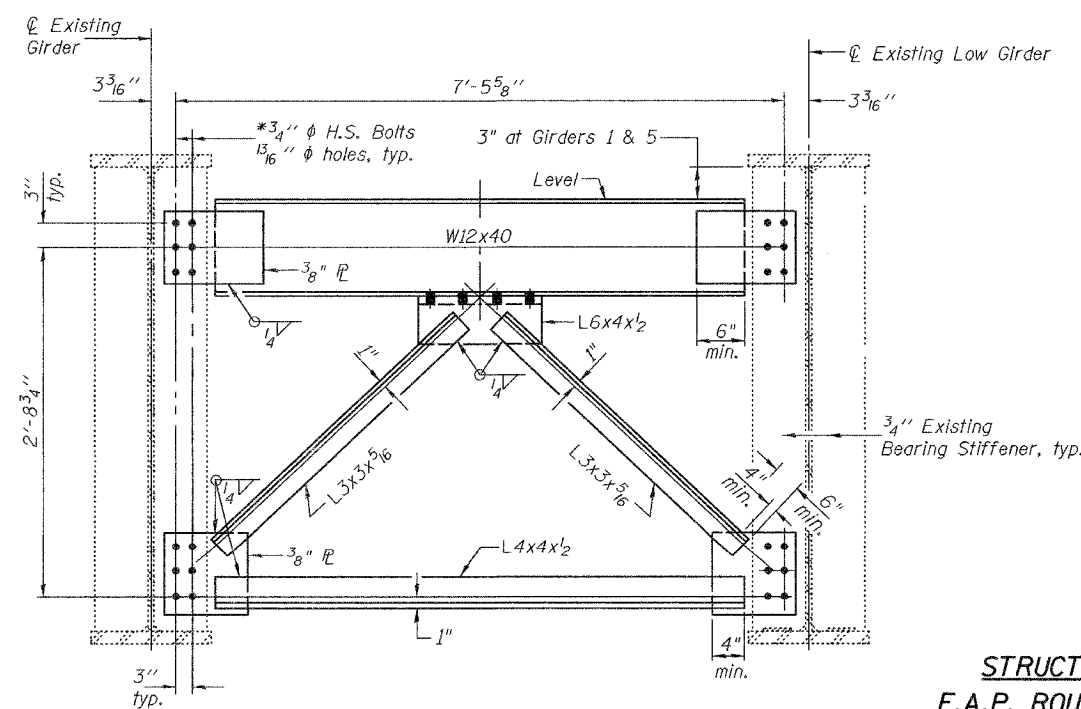


SECTION D-D

*Field drill $\frac{13}{16}$ " ϕ holes in the $\frac{3}{4}$ " PL to match the holes in the existing bearing stiffener. Typical for CF₁.



END DIAPHRAGM - D₁
(2-required)



TYPICAL END CROSS FRAME - CF₁
(8-required)

STRUCTURAL STEEL DETAILS
F.A.P. ROUTE 623 - SECTION X-IBR
LaSALLE COUNTY
STATION 1036+60.72
STRUCTURE NO. 050-0094

Notes:
Two hardened washers shall be required over all oversized holes.
Field verify all dimensions prior to ordering steel.
Cost of field drilling included with Furnishing and Erecting Structural Steel.
Existing connections for sanitary sewer and conduits not shown.
All crossframes or diaphragms shall be installed as steel is erected and secured with erection pins and bolts except as otherwise noted. Individual crossframes or diaphragms at supports may be temporarily disconnected to install bearing anchor rods.

DESIGNED	F.T.
CHECKED	S.M.R.
DRAWN	BECKY M. LEACH
CHECKED	F.T./S.M.R.

February 1, 2007
EXAMINED *Thomas J. Domagalaki*
ENGINEER OF BRIDGE DESIGN
PASSED *Ralph E. Anderson*
ENGINEER OF BRIDGES AND STRUCTURES